

A GMS COMPANY

# ISLAND BUILDER

An Information Source for  
Slegg Professional Customers

SPRING 2019



SLEGG EMPLOYEE FEATURE

## OUR PROS KNOW

Decades of experience and product  
knowledge give Slegg the service edge





# LIGHT IN WEIGHT, HEAVY IN PERFORMANCE



**BEST IN CLASS 5/8" CGC SHEETROCK®  
ULTRALIGHT PANELS FIRECODE® X\*  
MAKES INSTALLING DRYWALL  
EASIER AND FASTER THAN EVER!**

As a contractor, labour represents one of the greatest costs of any project. Any materials that result in productivity gains translate into labour cost savings which benefits your enterprise giving you an edge over competitors in your market. Achieving these savings just got easier with the introduction of CGC Sheetrock® UltraLight Panels Firecode® X, the lightest 5/8" Type X gypsum panel in Canada.

For more information, visit [cgcinc.com](http://cgcinc.com)







# CONTENTS

An Information Source for Slegg Professional Customers | SPRING 2019

**5**  
**OUR EXPERIENCE,  
YOUR SUCCESS**  
Message from  
Tim Urquhart

**9**  
**IN IT FOR THE  
LONG HAUL**  
Message from  
Doug Skrepnek

**13**  
**PRO SHOW**  
The Island's  
premium  
construction  
trade show,



**18**  
**SAFETY  
FIRST &  
ALWAYS**  
Keeping you  
safe on the job



**CENTRE-SPREAD  
FOLD-OUT**

**HOT NEW  
PRODUCTS**

Slegg's latest  
construction  
products and  
building materials



**36**  
**QUIET PLEASE**  
Modern building materials  
are making the most of  
advancements in sound  
reduction technology



**48**  
**FINE FINISHES**  
Exterior finishes are the icing  
on any renovation, and Slegg  
has plenty of options for  
your clients to choose from

**68**  
**THE WINNING  
LINE-UP**  
Vancouver Island's top  
construction companies  
bring home the awards



**81**  
**NO SUBSTITUTE  
FOR EXPERIENCE**  
Personal relationships and a  
commitment to excellence drive  
Slegg's veteran employees



**98**  
**CONVERSATION  
STARTER**  
Message from  
Steve Conroy

**PART OF YOUR  
COMMUNITY  
SINCE 1947**

**COMOX**  
554 Anderton Rd.  
Comox, BC  
(250) 339-2207

**LANGFORD**  
2901 Sooke Rd.  
Langford, BC  
(250) 478-5509

**SIDNEY**  
2030 Malaview Ave W.  
Sidney, BC  
(250) 656-1125

**CUMBERLAND**  
3217 Small Rd.  
Cumberland, BC  
(250) 336-8710

**NANAIMO**  
4950 Jordan Ave.  
Nanaimo, BC  
(250) 758-8329

**SLEGG DOOR SHOP**  
2901A Sooke Rd.  
Langford, BC  
(250) 386-3667

**DUNCAN**  
7281 Trans-Canada Hwy  
Duncan, BC  
(250) 748-1032

**SAANICHTON**  
2046 Keating Cross Rd.  
Saanichton, BC  
(250) 652-1130

**TOFINO**  
661 Industrial Way  
Tofino, BC  
(250) 725-2538

**SALT SPRING**  
804 Fulford-Ganges Rd.  
Salt Spring Island, BC  
(250) 537-4978

**VICTORIA:  
ADMIRALS RD**  
1496 Admirals Rd.  
Victoria, BC  
(250) 388-5443





## OUTDOOR INSPIRATION

LANDSCAPING PRODUCTS THAT CAN WITHSTAND  
THE TESTS OF TIME.



SLABS



PAVERS



RETAINING  
WALLS



## INDUSTRIAL, CONSTRUCTION & HIGHWAY PROJECTS

INDUSTRIAL STRENGTH PRODUCTS THAT  
MEET THE HIGHEST TESTING RESULTS.  
PRE-PACKAGED ANCHOR GROUT,  
SHOTCRETE, BRIDGE REPAIR PRODUCTS  
SPECIFIED IN M.O.T. PROJECTS



## SAKRETE MIXES & REPAIR PRODUCTS

PROFESSIONAL GRADE CONCRETE & REPAIR PRODUCTS FOR THE  
EVERYDAY CONTRACTOR.

SERVING THE CONCRETE INDUSTRY FOR OVER 40 YEARS

[www.basalite.ca](http://www.basalite.ca)



# OUR EXPERIENCE, YOUR SUCCESS



**Tim Urquhart**

**PRESIDENT**

Slegg Building Materials

☎ 250.478.5509

✉ T.Urquhart@slegg.com

**“Every member of the team is genuinely interested in providing the right tools, the right material, the right advice and help with choosing the right trades for any size project.”**

**Experience counts.** This is true in so much of life and especially true in the construction world. Many of us have seen first-hand what can happen when an inexperienced tradesperson is hired to do a job—or well-meaning but wrong advice is received. The finished project ends up being something less than imagined or even worse, something that needs to be torn down and rebuilt.

At Slegg we are fortunate to have so many experienced people on our team; a few of them are featured in this edition of *Island Builder*. Every member of the team is genuinely interested in providing the right tools, the right material, the right advice and help with choosing the right trades for any size project. In many ways they are builders in their own right.

Our people are here to help, so whether you need us to source a special order product or are looking for a sub-trade

referral, stop by any one of our 11 locations and take advantage of our experience. Reach out to someone pictured in this magazine or anyone in one of our branches; we are all here for the same reason: to see your project succeed!

I hope you also enjoy reading about some of the many award-winning builders we are showcasing in this edition. Their finished work is truly an art form. We plan on highlighting more of our customers in the coming months. Watch for this!

Construction and finishing products continue to evolve and change for the better. You'll find many of our suppliers' latest products featured throughout these pages. Take some time to see what's new and bring your questions to one of our experienced team members. Let's all keep learning together.

As always, thanks for your business and your support.

*Tim U.*





WESTERN  
CANADA'S  
-New Choice For-  
WINDOWS

## Why you should choose Milgard Windows & Doors

- **Style:** Choose a window that is a reflection of you.
- **Quality & Innovation:** Our windows and doors stand up while standing out.
- **Energy Efficiency:** With Milgard, the future looks bright.
- **Security:** Peace of mind for you and your family.
- **Community:** Because our home is near yours.
- **Full Lifetime Warranty:** We're with you every step of the way.
- **Complete Product Lines:** Vinyl, Wood, Fiberglass and Aluminum.





## Milgard® Patio Doors

Create an impressive entrance to your home with beautiful, high-quality patio doors from Milgard in your choice of styles and frames.

All our patio door products feature a wide range of colors, glass and hardware options so you can customize them to suit your taste and your home's architectural style.



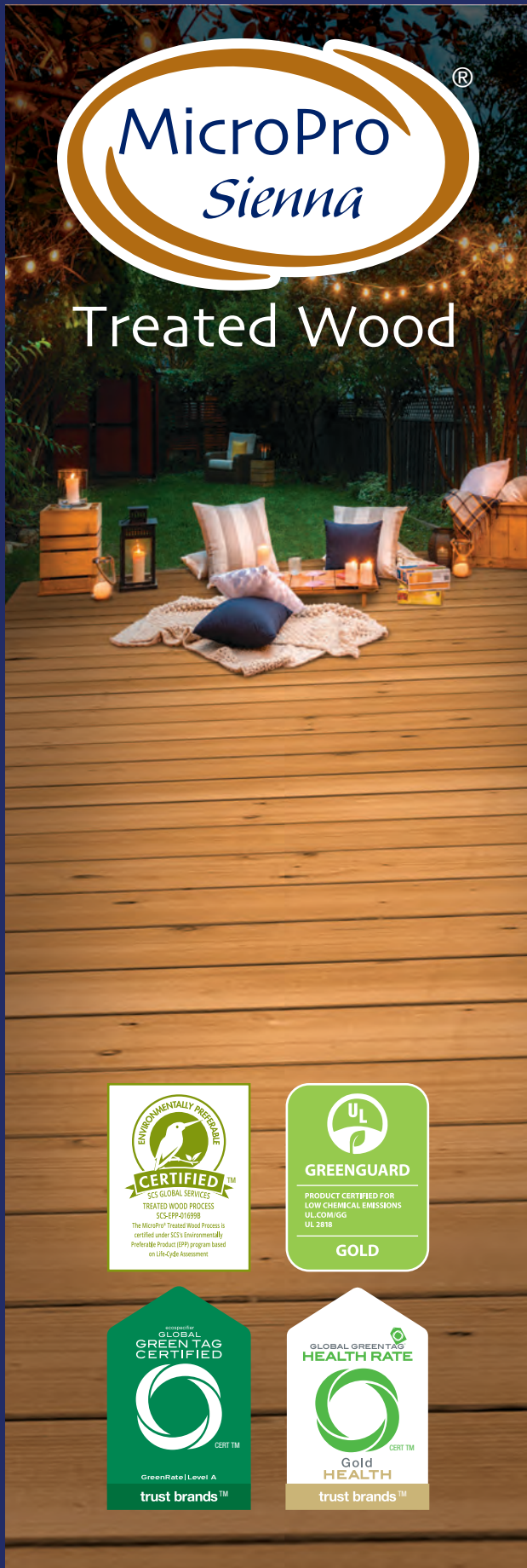
800.MILGARD  
milgard.ca







## Treated Wood



### Advanced treating technology

- Most advanced wood preservative – Micronized Copper Azole (MCA)
- More natural wood appearance
- Use above ground, in ground contact and freshwater applications
- In CSA standards, building code compliant
- Backed for Lifetime Residential Limited Warranty

### Lowest environmental impact

- Environmental footprint less than half that of traditional treated wood products
- Certified Global Green Tag and GoldHEALTH
- Certified low VOC
- Certified Environmentally Preferable Product
- Most points for treated wood in green building systems
- Parks Canada Thousand Islands National Park will allow MCA treated wood in their park in freshwater applications

### More compatible building material

- No more corrosive to fasteners than untreated wood
- Fasteners and hardware should be rated to the environment and conform to building code
- Approved for aluminum contact in above-ground applications

### Proven sales performance

- Over 1 billion board feet sold since release in 2013
- Over 16,500 truckloads (490 million feet) sold in 2018
- 800+ stocking dealers in Canada

## MicroPro Sienna Treated Wood FAQs

### What is MicroPro Sienna?

- Wood pressure treated with MicroPro® Micronized Copper Azole (MCA)
- Pigments added during pressure treatment give the wood a warm brown colour

### Where can it be used?

- In residential applications (decks, fences, freshwater docks and landscaping) above ground, in ground contact and in freshwater contact
- Usage is indicated on the end tag

### Why are there variations in the colour of MicroPro Sienna?

- Natural colour variations are to be expected due to varying exposure conditions, different species of wood, between heartwood and sapwood and knot areas

### What is the green colouring on MicroPro Sienna Treated Wood?

- Green colour is due to the copper that is used in the wood preservative system
- Noticeable along grain and around knots
- Over time, with exposure to sun and heat, green colour will blend into the overall tone of the wood

### Why is MicroPro Sienna more eco-friendly?

- Solid copper particles in the wood preservative are deposited in wood cells without solvents
- Reduces the environmental footprint to less than half that of traditional treated wood
- Global GreenTag® and GoldHEALTH™ Certified
- Certified an Environmentally Preferable Product
- Certified low VOC



[www.MicroProSienna.com](http://www.MicroProSienna.com)



# IN IT FOR THE LONG HAUL



**Doug Skrepnek**

**CEO**

**WSB Titan**

📞 905.669.1898

✉️ [doug@wsbtitan.com](mailto:doug@wsbtitan.com)

**“We also couldn’t have made it for over seventy years without staff who believe the job isn’t done until the customer is happy.”**

**As you leaf through the latest edition of *Island Builder***, you’ll quickly see our theme this time around centers on quality and longevity. These are two characteristics we believe we have in abundance in our customers, our staff and our suppliers.

Slegg has been an integral part of the Island construction community for almost three quarters of a century, but our longevity and commitment has only been possible because the people who support us are the professionals who have built this Island into what it is today, stud by stud, sheet by sheet, nail by nail. We are privileged and proud to be associated with many of the leading contractor names on the Island, people who build quality into everything they do.

We also couldn’t have made it for over seventy years without staff who believe the job isn’t done until the customer is happy. Many of our people have been with us for decades, and we know our newest employees are counting on being able to say the same thing when Slegg celebrates its hundredth anniversary.

Long-serving people with high standards of customer service make for strong, long-term relationships all around. The core values of the Slegg organization are built around maintaining and strengthening this foundation.

Last but certainly not least, a large and committed supplier base is absolutely key to fulfilling our commitment to you. Many of our suppliers have been with Slegg for generations and more than a few go back to the day we first opened our doors. Our suppliers are focused on providing us and you with high quality products and knowledgeable, industry-leading employees who strive every day to do everything they can to make you stand out to your customer. And at Slegg we remain focused on finding new manufacturers and distributors whose products and people will help us continue to support the Island construction industry for years to come.

Please enjoy this newest edition of *Island Builder*. Our thanks to you for your business and the job you do every day to build a better Island! 🏠



# Great Ideas For Outdoor Living



Stonehenge and StackWall



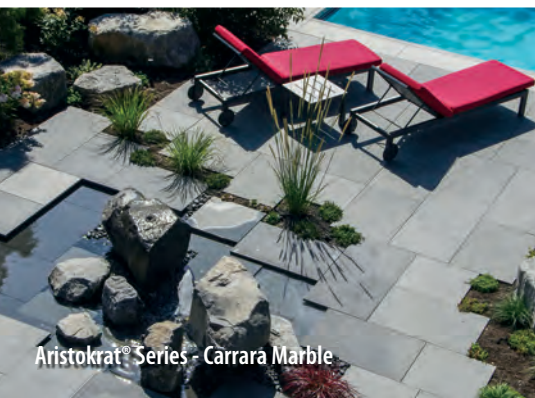
Aristokrat® Series - BlueStone



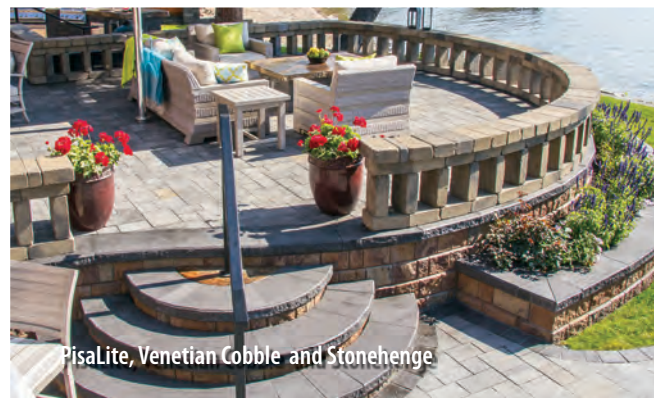
Pisa OneStone and Villa Stone



Aristokrat® Series - Milan Travertine



Aristokrat® Series - Carrara Marble



PisaLite, Venetian Cobble and Stonehenge



Aristokrat® Series - Tuscan Travertine

Everybody's talking about our *Aristokrat® Series* 2cm HydraPressed Porcelain Slabs

Visit our website for our growing gallery of images, installation guides and ideas that will help you create your own outdoor living paradise.

[www.pavingstones.com](http://www.pavingstones.com)

• Interlocking Pavers • HydraPressed Slabs • Retaining Wall Systems • Permeable Paving Systems • Aristokrat® Series 2 cm Porcelain Slabs • Elephant Armor® Concrete Patch & Overlay





IT'S TIME FOR A  
**Better Door Experience**  
WITH VISTAGRANDE® FLUSH-GLAZED DOORS

The versatility of our VistaGrande flush-glazed doors makes it easier for you to provide the perfect door for your customers. Available in a number of glass options, VistaGrande doors offer a wider viewing area and cleaner appearance over traditional glass inserts.



- ▶ Stile and rail feature lines give an authentic wood door look
- ▶ Glass options include textured, clear, mini-blinds, low-e, internal grids and SDL grids
- ▶ Available in 1/2, 3/4 and full lite designs in fir textured or smooth fiberglass



View and download the VistaGrande brochure at  
[www.masonite.ca/residential/products/catalogs](http://www.masonite.ca/residential/products/catalogs)



**MASONITE.**  
Open to extraordinary.





# rymar

**WE ARE CANADA'S #1 CHOICE!**

**SUPPLIER OF SYNTHETIC GRASS &  
RECYCLED RUBBER PRODUCTS**

*Visit us online at* **RYMAR.CA**  
**1-888-924-7277**



AVAILABLE AT



**SLEGG**  
BUILDING MATERIALS

LOCATIONS ACROSS THE ISLAND!



# PRO SHOW TIME



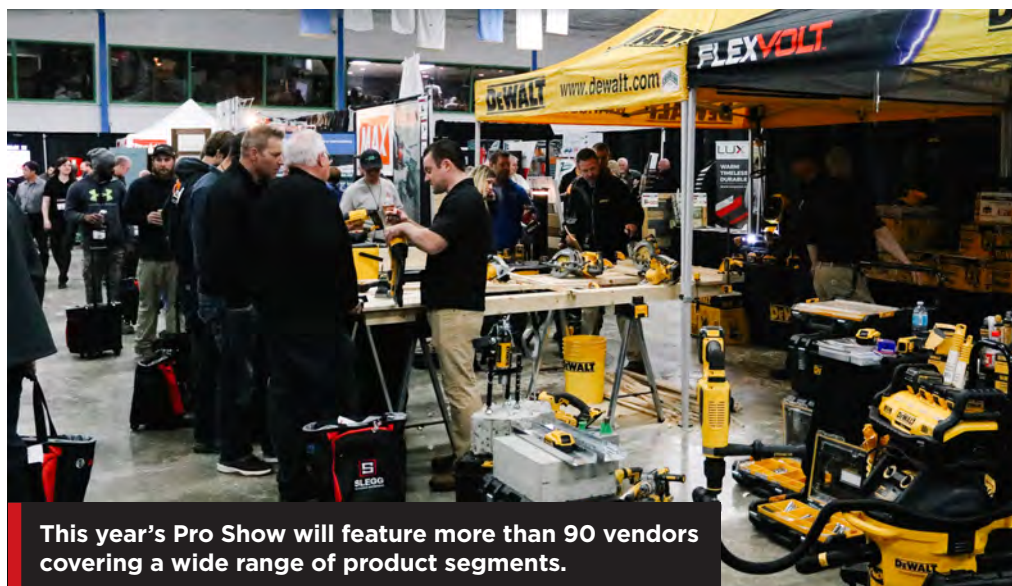
**The industry gathers once again for Vancouver Island's premium construction trade show**

**Friday, April 5, 2019 • 11:00am-5:30pm • Q Centre Arena, 1767 Island Hwy, Colwood, B.C.**

**When spring rolls around on Vancouver Island these days it means more than just budding flowers and warmer temperatures; it means it's time for the Slegg Pro Show.**

Now in its fourth year, the Pro Show has grown to become one of the signature events on the island's construction industry calendar.

"Every year the Pro Show has just been getting bigger and bigger," says Steve Conroy, Director of Merchandising for Slegg. "It is definitely the preeminent industry show on Vancouver Island, and one of the biggest shows of its kind in western Canada."



**This year's Pro Show will feature more than 90 vendors covering a wide range of product segments.**



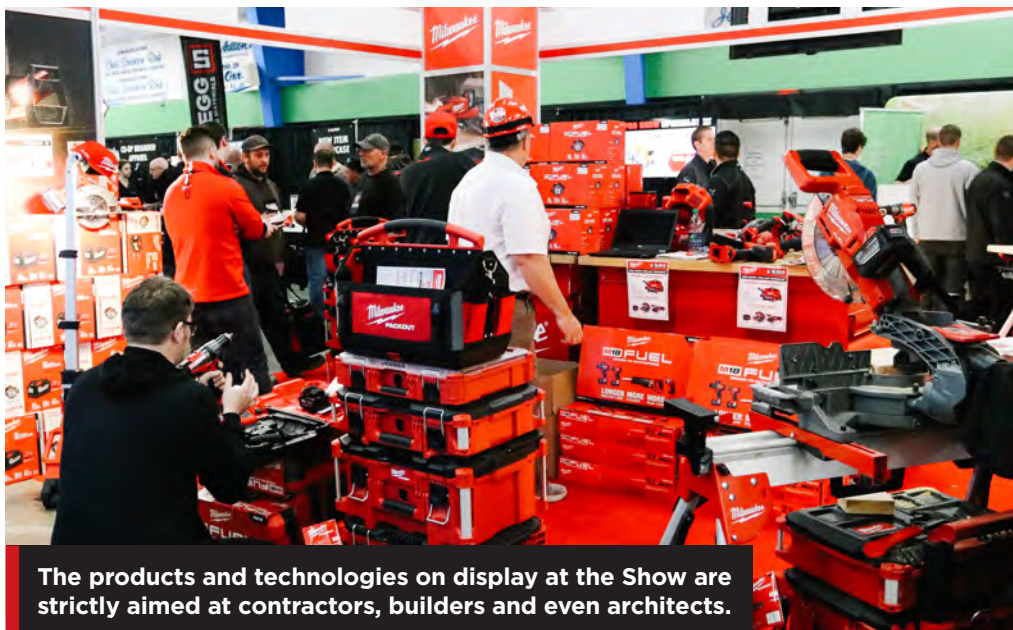


**WE'VE GOT  
YOU COVERED  
INSIDE AND OUT**

As Canada's #1 manufacturer of paints, stains and sealants, PPG offers you an unbeatable selection of brands, a broad range of products, and industry-leading innovation.







The products and technologies on display at the Show are strictly aimed at contractors, builders and even architects.

At last year's Pro Show more than 1,200 attendees braved the pouring rain to make the trip down to the Juan de Fuca Recreation Centre in Colwood, B.C. Once they got there, attendees got to browse through more than 90 exhibitor booths, catch up with old friends at the Slegg hospitality booth and take advantage of dozens of unbeatable Pro Show specials on tools, accessories and materials.

"The great thing about the Pro Show is that it is so focused on the professional customer," adds Conroy. "The products

and technologies on display at the Show are strictly aimed at contractors, builders and even architects. No matter what trade or area you specialize in—framing, electrical, plumbing, residential, commercial, interior, exterior—you're going to see something at the Show you haven't seen before or find some tool or material that's going to help you make more money in your business."

Conroy says this year's Pro Show will once again feature more than 90 vendors covering a wide range of

product segments—siding, roofing, doors, concrete and hardware, and of course, plenty of professional-grade tools available for testing. "The reputation of this show is reaching as far as Toronto. Vendors are lined up to participate which means better selection, assortment and deals!"

To register, visit:  
[www.sleggproshow.com](http://www.sleggproshow.com)



# CREATIVE | CONCEPTUAL | CONTEMPORARY

Less is more and the minimal is magnified.



Lynden Door | FineLine

Bringing you doors for every design and building need.

## **Lynden Door**

Molded Interior Doors and Door Systems

Wood Veneer Interior Doors and Door Systems

Architectural Interior Doors and Door Systems

## **Simpson** Door Company

Wood Stile & Rail  
Interior and Exterior Doors and Door Systems

## **THERMA TRU**

Fiberglass and Steel Exterior Doors and Door Systems

[www.AllianceDoorProducts.com](http://www.AllianceDoorProducts.com)



ALLIANCE DOOR PRODUCTS

Unit #1, 2076 Townline Rd. | Abbotsford, BC Canada V2T 6E5

# WORK WITH WEYERHAEUSER, THE INDUSTRY LEADER

**50  
YEAR**  
LIMITED WARRANTY

50 AÑOS  
GARANTÍA  
LIMITADA  
50 ANS  
GARANTIE  
LIMITÉE

**200  
DAY**  
NO-SAND GUARANTEE

200 DIAS  
SIN  
NECESIDAD  
DE LIJAR  
200 JOURS  
SANS  
SABLAGE

Weyerhaeuser engineers over 100 years of forest product knowledge into each Edge Gold® OSB subfloor panels. Thanks to our dedication to enhancements in strand technology and our proprietary edge seal, our panels withstand the elements so well they can extend the building season for framers. In addition, our easy fit tongue-and-groove edge allows for hassle-free installations.

Weyerhaeuser Edge Gold panels are backed by a 50-year warranty against delamination, and a 200-day “no sand” guarantee...they install flat, stay flat and look great for customer walkthroughs.

**Weyerhaeuser**  
**EDGE GOLD**™

[WEYERHAEUSER.COM/OSB](http://WEYERHAEUSER.COM/OSB) | 1.888.453.8358







**BOSCH**



# MAKE DUST HISTORY

Whether you are concerned about the health of your employees, your health, compliance or increasing productivity, Bosch has developed PRO+GUARD™ protection systems.



## MAXIMIZE PERFORMANCE

Bosch dust collection systems can boost your overall productivity with proven products like our Speed Clean™ dust extraction drill bits. When using these bits to set adhesive anchors, you can reduce installation time by up to 50%.



## GET COMPLIANT

When using the correct setup and following manufacturer's instructions, Bosch dust collection systems help keep the air cleaner by using HEPA filters that capture more than 99.97% of dust particles 0.3 microns and larger.



## PROTECT YOURSELF & OTHERS

According to health experts, inhaling dust containing silica in some instances may cause silicosis, lung cancer, COPD and other debilitating diseases. Bosch dust collection systems can reduce airborne dust, helping to create a safer and healthier working environment.

With the **LARGEST** product lineup in the industry, Bosch PRO+GUARD™ dust solutions will allow you to move toward **COMPLIANCE** and increase your **PRODUCTIVITY**.

## LARGEST SELECTION

Largest selection of dust solutions by application.

## HIGHLY EFFECTIVE

Most dust removal per application.

## BEST-IN-CLASS DUST EXTRACTORS

Consistent suction power to reach compliance.





# SAFETY FIRST & ALWAYS





# Slegg suppliers have the products and the know-how to keep you safe on the job

**Ask any professional contractor what their top priorities are on any job and most will place finishing on time and on budget at the top of the list.**

But another top priority on any jobsite, of course, should be safety. Aside from the natural desire to keep ourselves and our co-workers safe from harm, lost time to injury can have a direct impact on a contractor's ability to finish on time and on budget. Plus, fines accrued for non-compliance to jobsite safety regulations needlessly cut into your bottom line. Luckily there are plenty of products and resources available to keep you on the right side of the regs.







## M18 FUEL



**M18 FUEL™ 16" Chainsaw Kit**  
(2727-21HD)



**M18 REDLITHIUM™ HIGH OUTPUT™ HD12.0 Battery Pack** (48-11-1812)



**M18 FUEL™ SUPER SAWZALL®**  
(2722-21HD)



**M18 FUEL™ 10" Mitre Saw Kit**  
(2734-21HD)



**M18 FUEL™ 8-1/4" Table Saw w/ ONE-KEY™ Kit**  
(2736-21HD)



**M18 FUEL™ 7-1/4" Circular Saw Kit**  
(2732-21HD)

**50%** MORE POWER  
RUNS COOLER

## PACKOUT™

**MOST VERSATILE DURABLE**  
MODULAR STORAGE SYSTEM



**FULLY CUSTOMIZE YOUR STORAGE™**



**IMPACT RESISTANT™**



**IP65 RATED PROTECTION™**



**20" PACKOUT™ Tote** (48-22-8320)



**PACKOUT™ Low-Profile Organizer** (48-22-8431)



**20" PACKOUT™ Tool Bag** (48-22-8322)





**HILTI WMS100**  
Water Management  
System



**HILTI VC 150-10 X**  
Dust Vacuum



**HILTI DRS-Y-Drilling**  
Dust Removal Drilling



**Dust extraction at the point of tool contact is the most effective way to cut down on dust. These Hilti tools are available through the Slegg rental program**

## DUST IN THE WIND

Construction jobsites tend to be very dusty places, but not all dust particles are created equal; some fine particulate matter, silica dust specifically, can cause very serious health issues if inhaled in large quantities over long periods of time. Silica dust is created whenever power or impact tools are used on concrete, stone or other masonry materials.

“Fifteen years ago, most of the safety buzz about airborne particles was focused on asbestos, but that was because we didn’t really understand just how dangerous silica dust can be,” explains Jim Goehringer, Territory Manager for Vancouver Island Milwaukee Tools. “Now there’s a big push throughout the construction industry, from both a product innovation perspective and a compliance perspective, to cut down on silica exposure.”

A wide variety of construction activities can create silica dust particles – chipping, sawing, grinding, hammering, drilling, cutting, sand-blasting and general demolition. The dangerous crystalline particles exist in

a wide variety of materials as well, including concrete, cement, tile, brick, granite, sand, masonry products and some asphalts. Once inhaled, silica particles make their way into the lungs, causing scar tissue to build up and compromise breathing. In the worst cases, this dust can cause silicosis, an irreversible lung disease, as well as lung cancer.

Given the health risks posed by silica dust, WorkSafe BC revised its jobsite safety regulations in May 2017 to categorize silica as a hazardous substance requiring contractors to have a comprehensive remittance strategy to limit worker exposure. Under the current guidelines, the permissible exposure limit, or PEL, for silica dust is just 50 parts per million over an eight hour period, which is very close to zero exposure allowed. And if you think you can address the problem by handing out a few dust masks, think again.

“WorkSafe BC has been a leader in Canada with regard to reducing exposure to silica dust,” says Maria Para, Project Manager for Health & Safety Training for Hilti Tools. “The key word is ALARA, or ‘as low as reasonably achievable’, and the expectation

is that employers are doing everything in their power to keep exposure as low as possible. But you can’t just jump from exposure to respirators; employers are expected to have a thoughtful, documented silica remediation plan and be able to show actions that have been taken on the jobsite to limit exposure.”

According to WorkSafe BC, silica dust remediation should be a four-step process. Step one involves eliminating as much dust as possible at the source, by using different materials if possible or using different processing methods that create less dust. Step two focuses on engineering controls, which involves making changes to facilities, equipment or processes to reduce dust exposure. Using the right tools and tool accessories is vital here.

“Dust extraction at the point of tool contact is the most effective way to cut down on dust,” says Goehringer. “There are a number of ways to do that: vacuum systems that connect to the tool and a HEPA-grade shop vac, hollow-core drill bits, vacuum sleeves and special covers for grinders, even using water. Lots of tool solutions on the market now to help contractors control dust.”

Step three of a good dust remittance strategy looks at administrative controls, or things that can be changed around







# Think spray foam insulation is more expensive? It's worth another look.

The National Energy Code, together with provincial codes and utility programs, is encouraging Canadian builders to produce more efficient homes. Icynene's advanced insulation performance allows new homes to meet the requirements, and deliver savings through cost offsets. Visit [icynene.ca](http://icynene.ca) for full details.





A scenic photograph of a mountain lake, likely Crater Lake, framed by evergreen trees. The lake's surface is calm, reflecting the surrounding mountains and the clear blue sky. The trees in the foreground are dark green, with some yellow lichen visible on the tree trunks. The mountains in the background are rugged and rocky, with some snow patches.

THERE'S MORE THAN ONE WAY  
TO PLANT A TREE.



THE INDUSTRY'S FIRST **SMOG-REDUCING SHINGLE LINE**  
FEATURING 3M™ SMOG-REDUCING GRANULES • *TIME* TOP 50 INVENTION OF 2018

[MALARKEYROOFING.COM](http://MALARKEYROOFING.COM)





# OUTSTANDING TOOLS. OUTSTANDING SERVICE. OUTSTANDING RESULTS.

Tools and service for professionals.  
Brought to you by professionals.



Slegg  
Building Materials  
now rents Hilti  
tools!



As your authorized Hilti distributor, Slegg Building Materials offers a wide range of Hilti tools and consumables for sale and a full line available for rent — backed up by the Hilti service and support you need to get the job done right.

Need fast repair service or expert support for your Hilti products? Call or drop by today! As an authorized Hilti repair drop-off depot, Slegg Building Materials can help you get back up and running in almost no time.





When it comes to silica exposure, the most important element of personal protective equipment in a dust remediation plan are respirators and filters.



doing the actual job that can reduce exposure. This would include developing a written control plan, posting warning signs, providing proper tools, training and scheduling work to isolate dust areas. Finally, in step four, the dust remediation plan turns to personal protective equipment, or PPE.

"Of course, workers have to have the proper respirators and know how to use them and clean them, but PPE should only be one part of a comprehensive silica remediation plan," adds Para.

The most important element of PPE when it comes to silica exposure are respirators and filters. Again, there are plenty of excellent respirators on the market, both half- and full-face, and respirator technology has come a long way in terms of effectiveness and comfort.

"We work hard to educate end-users about our products and let contractors know the solutions that are out there

to protect them from airborne hazards on the jobsite," says Matt May, National Account Manager for 3M Canada.

"It starts with picking the right filter cartridge for the job: oil-based cartridges are designed to capture vapours generated by things like paint, varnish and chemicals, while non-oil-based cartridges are designed to capture dust. It is important to pay attention to the rating on the cartridge."

May stresses that a filter cartridge can only be effective if it is used correctly. Disposable cartridges, for example, are just that – disposable.

"Disposable filters need to be changed based on use, not just time. If you are doing heavy sanding, a filter might be loaded in a few hours; but if you are painting, a vapour cartridge might be rated for 40 hours before it needs to be changed. Some are in the habit of changing their filters once

a week, but you need to remember that the filter is expiring as soon as you take it out of the package. If you take the cartridge out at the end of the day and store it in a Zip-lock, it will prolong the life and give you more confidence that it is working."

A good place to start putting together a dust remediation plan is the WorkSafe BC website, which offers a link to a free online "Silica Tool" offered by the BC Construction Safety Alliance. The tool helps contractors better understand the exposure threat on their particular jobsite by comparing factors like materials in use, work processes (drilling, hammering), nature of jobsite (indoor, outdoor) and time spent on that process.

"Once you have entered all your jobsite parameters, the tool generates a document that explains your relative silica exposure level and offers suggestions to limit exposure risk," explains Jill Maislin, Health & Safety Lead for Hilti Canada. "This is a great way to start building a remediation plan, but contractors have to act on it. If an inspector visits your site, they will be looking for evidence that you are aware of the risk, that you have come up with a plan to address it, and that you have the right tools and equipment on-site."

**The BCCSA has developed the Silica Control Tool™ as a resource for the construction industry in B.C. The tool assists employers in conducting appropriate risk assessments, implementing effective controls and safe work practices where RCS dust may be an occupational hazard.**





# NORSKE™

# POWER. PRECISION. PERFORMANCE.

Norske™ Tools is dedicated to delivering a steady stream of advanced solutions specifically to meet the ever-changing needs of the professional user. All products are engineered with careful consideration for what professionals need to be at the absolute top of their game and make each project better than the one before it. To learn more visit [www.norskertools.com](http://www.norskertools.com)



# NORSKE™

LEGENDARY PERFORMANCE™







# UP YOUR CUTTING GAME!

Diablo's premium brand of cutting tools and abrasives are specifically designed for the contractor and remodeler to provide superior performance while withstanding the most extreme conditions.

Diablo products are manufactured in the world's most technology-advanced facilities to consistently provide high-quality results every time; saving you time and money.

Diablo specializes in circular saw blades, reciprocating blades, hole saws, sand paper, bonded abrasives, router bits and forstner bits... so no matter what job or results you need, Diablo has a specialized solution that is guaranteed to give you the best performance.

- Diablo produces its own carbide so we are able to create solutions designed for specific applications to maximize your blade's cutting life
- Diablo creates innovative product designs catered to your cutting application for highest quality finish and longest cutting life
- Manufactured in the most sophisticated and technologically-advanced facilities to provide you with the latest innovation in Diablo products

**Maximize your productivity by taking advantage of the latest cutting tool & abrasive innovations from Diablo.**



**[www.DiabloTools.com](http://www.DiabloTools.com)**





# POWER THROUGH A 10-HOUR WORK DAY

3M™ PRO SAFETY PRODUCTS ARE DESIGNED FOR  
PROS, BUILT FOR REAL-WORLD PERFORMANCE,  
AND ENGINEERED FOR COMFORT THAT LASTS.



3M™ Disposable Respirator  
with Cool Flow™ Valve — 8511



3M™ Respirator with Cool Flow™ Valve  
— Paint Project Quick Latch 6502QL



3M™ Securefit™ Eyewear — SF400

AVAILABLE NOW. VISIT YOUR LOCAL SLEGG BUILDING MATERIALS LOCATION.





Ladders designed for professional use are categorized as Grade 1 (rated to 250 lbs.), Grade 1A (rated to 300 lbs.), and Grade 1AA (rated to 375 lbs.). If the work being done requires sustained effort above 10 feet, a work platform or scaffold may be required.

## WORKING AT HEIGHTS

As bad as silica dust can be, the danger of falling is an even more pervasive threat for construction workers. Whether it's a roofing job or simply standing on a ladder to install a pot light, a fall can mean days or weeks of lost time through injury, or much worse. Lost time injuries in Canada from falls number in the tens of thousands each year, and falls are the leading cause of workplace fatalities.

Thankfully, one of the greatest workplace dangers is also one of the easiest to mitigate or eliminate. There is always danger working off the ground, but simply following regulations and using the appropriate equipment correctly can reduce the risk of serious injury and death dramatically.



"Common sense can go a long way to keeping you safe, but once you get your belt buckle outside the ladder rails, gravity takes over and bad things can happen," says Stuart Evans of All Right Ladder and Scaffold.

"Lots of preventable accidents happen because some contractors insist on using worn out or cheap ladders and equipment. That's one of the first things a site supervisor or safety inspector will check: the condition of the ladders and that they have all the necessary rating labels. If they don't, you may have to replace them before you can work, so cutting corners on cheap ladders can end up costing you."

Ladders should carry a duty rating and all ladders sold in Canada must meet minimum CSA standards.

Ladders designed for professional use are categorized as Grade 1 (rated to 250 lbs.), Grade 1A (rated to 300 lbs.), and Grade 1AA (rated to 375 lbs.). It is also important to keep in mind that only non-conductive wood and fibreglass ladders should be used for electrical work.

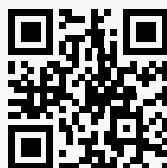
"Contractors need to make sure they are using ladders that WorkSafe BC has approved specifically for use on jobsites in the province," Evans adds. "The best ladders have a four-to-one load capacity built in so they can take far more weight than you are ever likely to put on them."

But even the best ladders aren't enough on some jobsites. If the work being done requires sustained effort above 10 feet, a work platform or scaffold may be required. "The regulations around ladder use have been evolving, and now inspectors only like to see them used for light-duty work. That means no lifting heavy materials, three points of contact at all times, and



# Compressors.

**Bissett Fasteners**  
now offers a full line  
of **gas** and **electric**  
compressors.



View the full compressor line up with specs  
online at [bissettfasteners.ca/compressors.pdf](https://bissettfasteners.ca/compressors.pdf)

Or use our QR code to take you there! Choose  
**Bissett** as your trusted solution for **Fasteners,**  
**Compressors, Hoses & Fittings, and Tools!**

**BISSETT**<sup>™</sup>  
DRIVEN BY PROFESSIONALS

BF-MC0010



BF-MC0050



BF-MC0070





**According to Occupational Health and Safety regulations from WorkSafe BC, employers must ensure that all workers are instructed in the proper use of fall protection systems and procedures before being allowed into a fall-risk area.**



duration of work on the ladder no more than 15 minutes. If you use a platform ladder though, multiple trades can use it for extended periods, so they are being encouraged by site inspectors, if not mandated.”

Construction safety equipment has also come a long way in the area of fall restraint and fall arrest. Years ago, if workers wore any type of equipment at all, it was often just a rope attached to a belt.

“If someone was to fall with just a belt around their waist to stop them, that could do more damage than the fall itself, depending on the height,” says Tim Accursi, Fall Protection Specialist for Surewerx, a Coquitlam-based supplier of tools and safety equipment.

“In the 1980s the industry started to move toward the full-body harness as both a fall restraint and fall arrest system,” he said. “It’s a vastly superior system because, if you ever do fall into it, the harness spreads the load throughout the torso. Plus the systems today are designed to decelerate the fall, rather than just jerking you to a stop at the end of the safety line.”



Although specific regulations vary from region to region, it is generally mandated across Canada that fall protection equipment must be employed on jobsites with a fall risk of three metres or more. This includes fall arrest harnesses, which are necessary when working at or near the edge where a fall could occur, and fall restraint equipment or devices, such as restraint lanyards, tethers or guardrails, which are designed to prevent falls from occurring in the first place.

But while the regulations and equipment are in place to prevent falls on the job, proper training and oversight are often lacking.


“You may have the best fall restraint harness money can buy, but if you don’t anchor it correctly, or do the correct calculation to stop a fall safely depending on the height, you may still end up on the ground,” argues Accursi. “A shock-absorbing lanyard can slow you down over a given distance, but you have to know how to calculate that safe distance. Depending on what you’re doing, a self-retracting lifeline may be more appropriate. The technology is better than it’s ever been; the problem is many don’t know enough about the products available and how to use them.”

According to Occupational Health and Safety regulations from WorkSafe BC (Part 11 – Fall Protection), employers must ensure that all workers are instructed in the proper use of fall protection systems and procedures before being allowed into a fall-risk area. Employers are also expected to have a written fall protection plan if work is being done at a location not protected by permanent guardrails where a fall of 7.5 metres or more could occur. All equipment should be kept in good working order and inspected by a qualified person before each shift. Employers that work at heights must now have their fall protection plans and training procedures certified by the province.

“It used to be that any Tom, Dick or Harry thought they could train people to work at heights, but they can’t,” warns Accursi, who also sits on the CSA Fall Protection Standards Committee. “Things are getting better, especially in terms of equipment, but there are only so many inspectors and we’re not where we need to be in terms of enforcement.”

“”

**If someone was to fall with just a belt around their waist to stop them, that could do more damage than the fall itself.**

“I still see jobsites where there are no guardrails, or where lanyards are not anchored adequately. And there are still employers out there who just say, ‘Here’s your harness, now get to work.’ Then there are workers who hate the harnesses and lifelines because they get in the way and slow them down—it’s crazy. Your number one job is to go home at the end of the day.” 



# It's not just any Skylight, it's a **VELUX**!

## Why VELUX?

- ✓ World's largest and leading skylight and sun tunnel manufacturer since 1941.
- ✓ Products engineered and tested to meet the harshest climates across Vancouver Island and around the world.
- ✓ Widest and most innovative range of skylight, sun tunnel and roof window models including: solar technology, balcony roof window, blinds and skylight automation.

## Unmatched performance

All No Leak skylights feature:

- ✓ Integrated gaskets provide dry air and water tight seal, outperforming standard silicone and glazing tape 'wet seal' installations.
- ✓ Structural grade glazing sealant for an aquarium tight seal.
- ✓ Unique corner key design with sealed capped corners eliminates exposed fasteners and provides a sleek and durable finish.
- ✓ Quick and easy installation with engineered flashings that integrate with all roofing materials.

**At VELUX, we stand behind our warranty and service.**

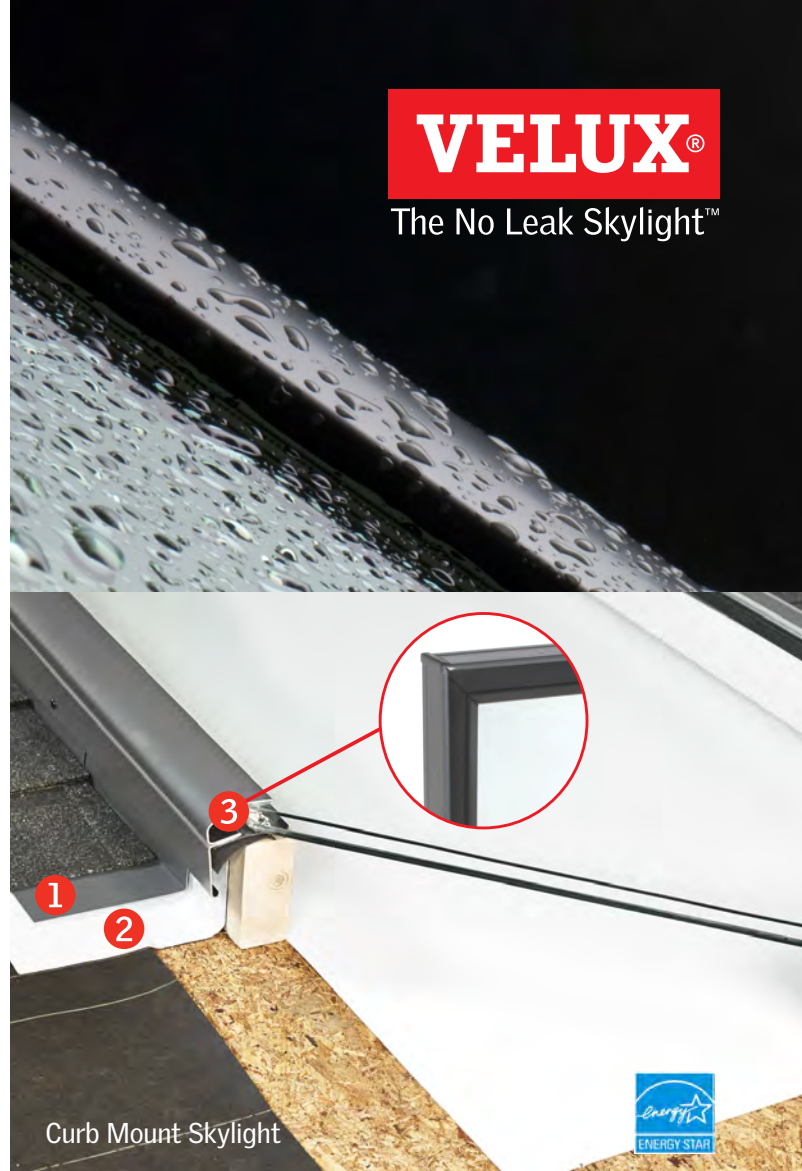


Align your company and reputation with the global leader in skylights. Enjoy rebates, free training, lead generation, contests and more.

**Register at [vipmembers.ca](http://vipmembers.ca)**

[velux.ca](http://velux.ca)    

**VELUX**<sup>®</sup>  
The No Leak Skylight<sup>™</sup>



**VELUX skylights feature 3 layers  
of water protection for a leak proof, hassle free**

- 1 Adhesive underlayment for secondary water protection
- 2 Engineered flashing is easy to install and the primary defense against the elements (optional for curb mount installations)
- 3 Unique curb gasket on the inner frame of the skylights provides an air and water tight seal to the curb

**20  
Year  
Warranty**

Seal Failure

see [velux.ca](http://velux.ca) for full details





# TRIMLITE

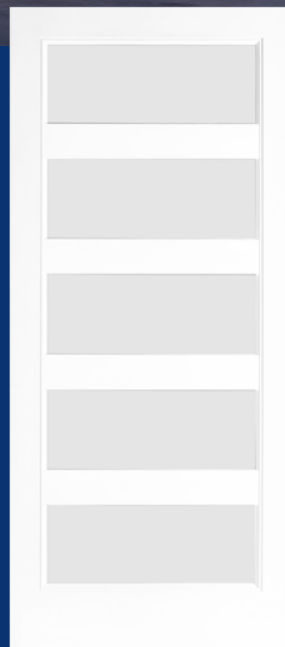
*Handcrafted Construction Meets Modern Design*



Since 1982, *The Local Name* for Quality Door Products



Solid Stile & Rail  
Interior Doors



Fully Composite  
Fiberglass Entry Doors



Doorlites &  
Frames

[www.trimlite.com](http://www.trimlite.com)

604-533-4111



**Unique. Versatile. Timeless.**



**INTRODUCING THE  
LIVINGSTON™**

Masonite's exclusive new  
design is making homeowners  
**STOP AND TAKE NOTICE  
OF THEIR DOORS.**



**The Livingston™ door** instantly transforms any interior with a unique profile that is universally appealing. Set yourself apart by choosing the only interior door designed to make a lasting statement.

- ▶ Smooth, primed surface ideal for painting
- ▶ Full range of passage and bifold doors
- ▶ Safe 'N Sound® solid core construction available for better durability and sound reduction with the heft and feel of a wood door
- ▶ 20-minute fire-rating doors available for select heights & designs (1-3/4" width only)

FOR MORE INFORMATION, CONTACT A METRIE® DISTRIBUTOR OR SALES REPRESENTATIVE, OR VISIT: [METRIE.COM](http://METRIE.COM)

 **MASONITE®**

BROUGHT TO YOU BY:

 **METRIE®**





Build Anything Better.™

## THE COMPLETE CONSTRUCTION SOLUTION FOR BC BUILDING CODES



### 4 CONSTRUCTION STEPS. 1 SIMPLE PACKAGE.

1. Reinforced Concrete
2. Continuous Insulation
3. Air + Vapor Barriers
4. Built-in Studs

**R-25+ Wall Assembly**

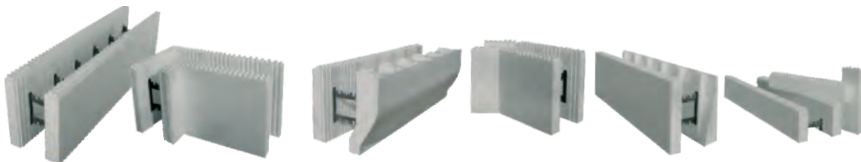
### BUILT-IN COST SAVINGS

- = LESS LABOR
- = LOWER CONSTRUCTION COSTS
- = FASTER BUILDS

LOGIX INSTALLER TRAINING COMING SOON!  
Approved for 6 BC Housing CPD points.

### IDEAL FOR:

Crawl Spaces +  
Basements +  
Above-Grade Walls



**LogixICF.com**



# QUIET PLEASE

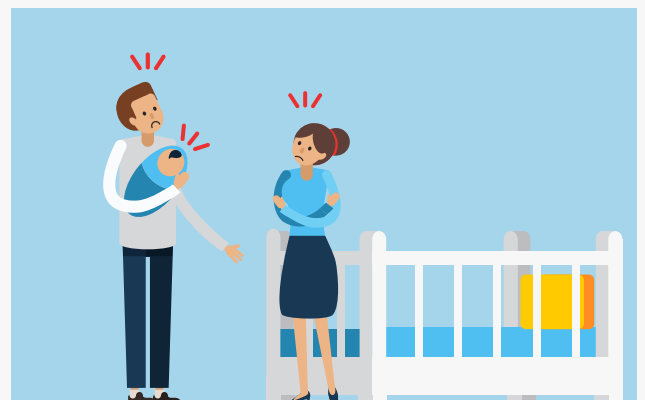
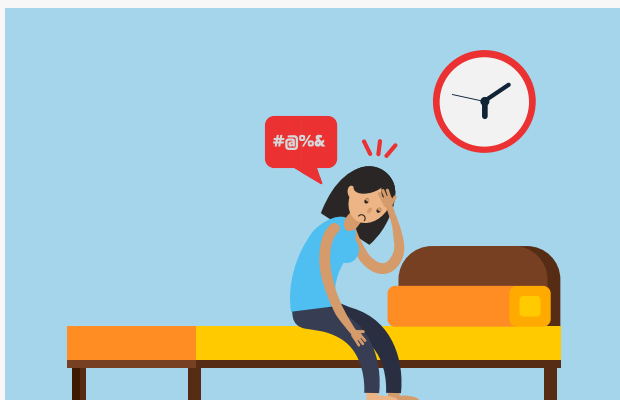
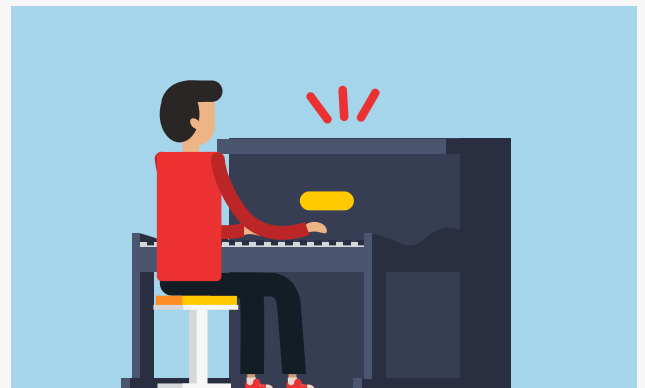
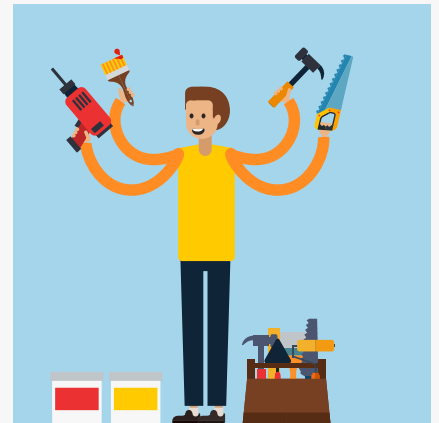
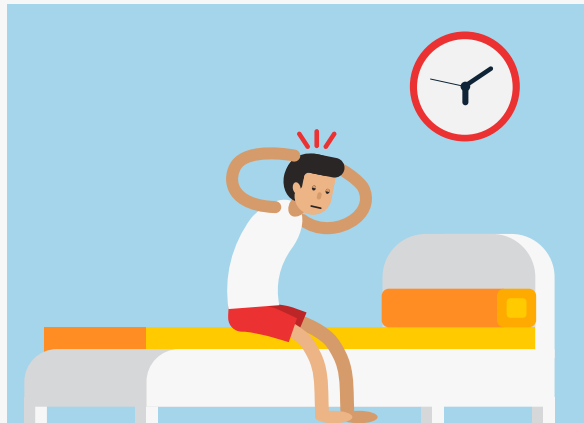
## Modern building materials are making the most of advancements in sound reduction technology

**One way to tell a well-constructed building is to stand still and listen.** How well you can hear the voices in the next room, or the television or blender in the apartment across the hall, can go a long way toward telling you what kinds of materials were used in the construction of the building and how well those materials were put together. While solid construction methods will always play a major role in noise reduction, there are now a variety of innovative new products on the market specifically designed to keep things quiet.

Noise within structures comes from essentially three sources. The most obvious noise, of course, are airborne sounds, like voices or music from a stereo, which are carried on the air through open doors, windows and archways. Impact noise, from people, chairs or equipment moving around, is carried on waves of vibration that move through and along structural members within the building. Finally there is flanking noise, which travels under, over and around poorly constructed or sealed walls within a structure. In fact, flanking noise can even travel through ductwork or back-to-back electrical outlets from one room to another.











# TOTAL HEAT, AIR & MOISTURE MANAGEMENT.

## ComfortSHIELD™ Building Enclosure System.

### High Performance Roof System

- TruDefinition® Duration® Shingles
- Deck Defense® underlayment
- Weatherlock® ice & water barrier
- PROPINK® loosefill insulation
- Raft-R-mate® attic vents

### CodeBord® Exterior Air and Moisture Management System

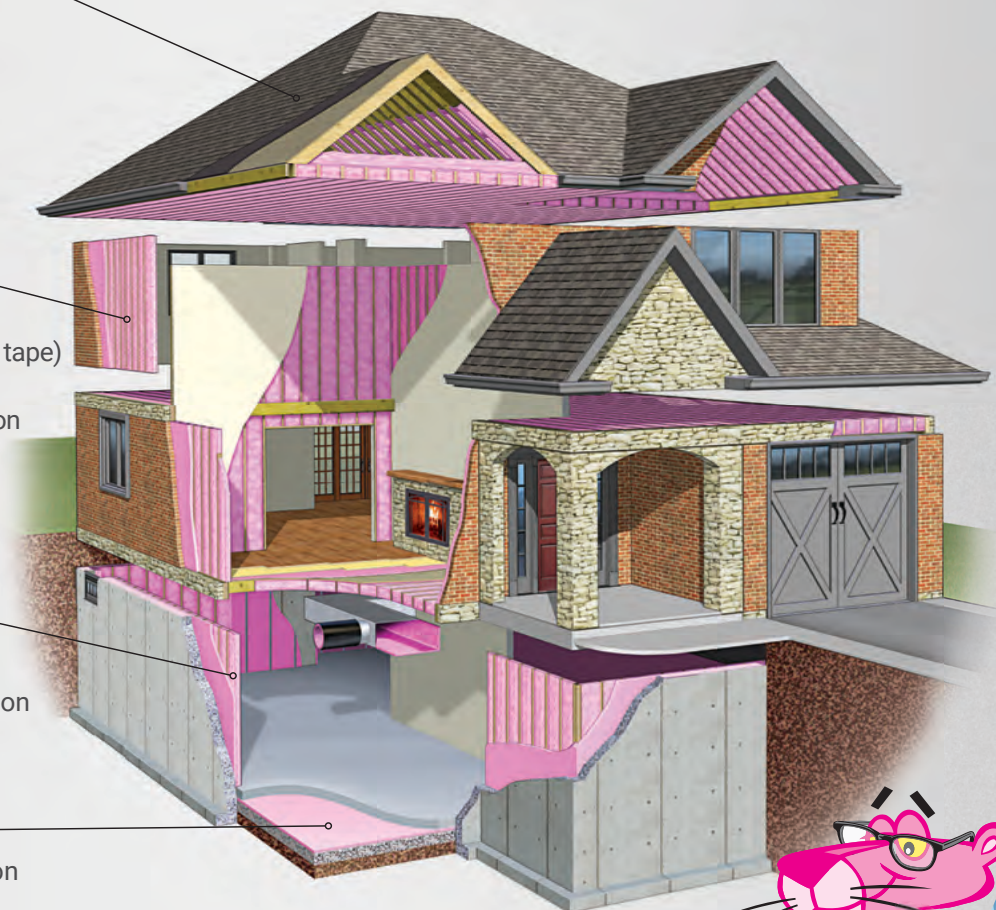
- FOAMULAR® CodeBord® XPS insulating sheathing and taped joints (JointSealR™ tape)
- FlashSealR® flashing tape
- EcoTouch® PINK® FIBERGLAS® Insulation (R-20/22/24)

### High Performance Basement Insulation and Moisture Management System

- FOAMULAR® CodeBord®
- EcoTouch® PINK® FIBERGLAS® Insulation

### High Performance Basement Slab System

- FOAMULAR® CodeBord® XPS Insulation with taped joints (JointSealR™ tape)



ComfortSHIELD™, Owens Corning's  
High Performance Complete Building Enclosure  
System for high performance envelopes.

Learn more at [www.owenscorning.ca](http://www.owenscorning.ca)  
or call us at 1-800-GET-PINK®



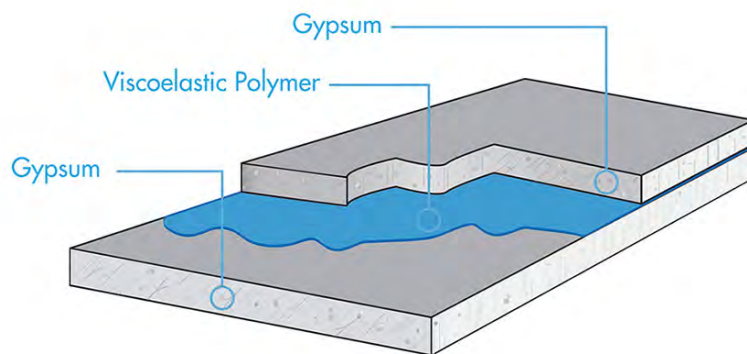
73 | PINK® FIBERGLAS® Insulation

20 | FOAMULAR® XPS Insulation





Although the Quiet Rock acoustic drywall panel looks like any other conventional drywall and comes in the same thicknesses, it incorporates leading-edge sound reduction technology developed in Silicon Valley.



“When you are trying to cut down on sound transmission in a building it’s important to understand the kinds of noise you want to mitigate and how that sound travels,” says Yvon Duhamel, Product Manager, North America – Industrial Division for Drummondville, Que.-based Soprema. “There are lots of factors to consider – the type of structure; the materials in use: wood, concrete, metal, drywall; the type and amount of insulation; even the length of the joists plays a role in sound transmission.”

The National Building Code (NBC) was amended a few years ago to strengthen sound-resistance requirements for all new buildings in Canada. In order to address the problem of flanking noise and better reflect the acoustical performance of the complete building system—walls, ceiling and floor junctions--the NBC now calls for a minimum Apparent Sound Transmission Class (ASTC) rating of 47 in multi-unit buildings, compared to the old Sound Transmission Class Rating (STC) of 50. The higher the STC rating of the structural materials and systems, the less sound is transmitted between rooms; for example, a recording studio or movie theatre might require walls with an STC rating of 60 or better to suppress sound transmission in and out.

Traditionally, architects and builders have mitigated sound transmission by adding additional materials. That could mean more or denser insulation

within walls, floors and ceilings and/or additional layers of drywall. While this approach will succeed in suppressing sound transmission to a point, it comes with drawbacks.

“When you add insulation or more layers of drywall you eventually get to a point of diminishing returns,” says Kris Norman, Director of Business Development for SoundDivide, a company that represents manufacturers

this challenge is the Quiet Rock acoustic drywall panel. Although it looks like any other conventional drywall and comes in the same thicknesses, Quiet Rock incorporates leading-edge sound reduction technology developed in Silicon Valley.

“It’s boring to look at and it installs the same as any other drywall, but each Quiet Rock sheet has a layer of specially formulated glue at its core,” explains

“”

**That gives each sheet of Quiet Rock the sound resistance qualities of three or four layers of regular drywall.**



of advanced acoustical products across Canada. “More layers of drywall means thicker walls that take up more floor space; it also adds more weight to the structure and there are obviously costs associated with additional materials and more installation time. Builders have to consider the level of sound resistance they want or need to achieve in a building or given room based on use.”

One example of an innovative building product specifically designed to address

Norman. “When sound waves hit the panel, that core layer allows the drywall to vibrate and convert the acoustic energy into thermal energy—so sound into heat. That gives each sheet of Quiet Rock the sound resistance qualities of three or four layers of regular drywall.”

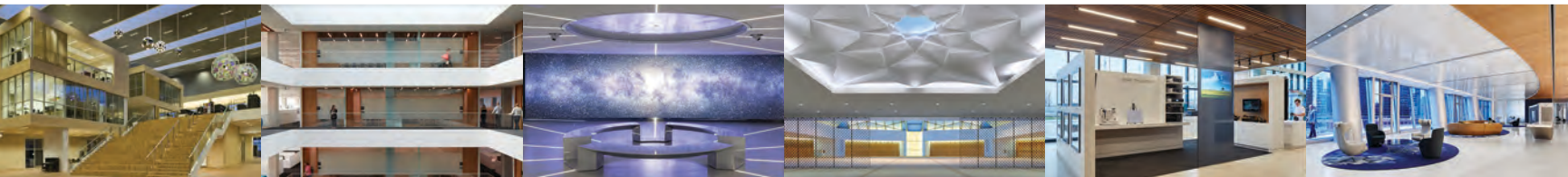
Obviously, the advantage of a product like Quiet Rock is that it allows builders to achieve the same or better sound resistance ratings using less material and less labour. In terms of a





# be quiet.

Our results speak for themselves. Core Acoustics is Canada's trusted source for quality acoustic solutions - acoustical ceiling and wall systems, sound control products, noise barriers and more.



**coreacoustics**  
Integrated Acoustic Systems  
*A GMS COMPANY*

Visit us at the Slegg Pro Show and see how we're redefining sound at its core.

TOPAKUSTIK® | SKY ACOUSTICS | LINEA | CGC™ | CLIPSO® | TECOUSTICS™ | HELIOS® | PLITEQ® | MSL®

For more information call or email | 905.652.4360 | [info@coreacoustics.ca](mailto:info@coreacoustics.ca)





# Continuous Insulation Solutions that meet BC Building Codes

## THE HALO® EXTERRA® R-24 WALL ASSEMBLY

### EFFECTIVE R-24 HALO® WALL ASSEMBLY 8 1/2" Wall Thickness

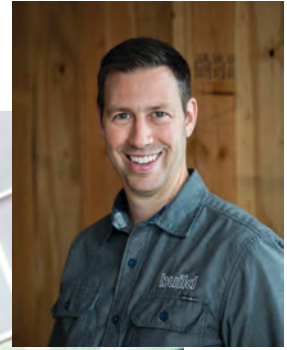


- ✓ **Breathable** (will not trap moisture)
- ✓ **Weather Barrier** (meets BC Code as a weather barrier)
- ✓ **Highest long-term R-value** (R-5 per inch\*)
- ✓ **Eliminates the need for an additional weather barrier**
- ✓ **40% increase in effective R-value for less than \$1.00/sq.ft. of wall**





**Matt Risinger**  
Builder and building  
science expert



# Trailblazer



## Continuous stone wool insulation that improves thermal performance

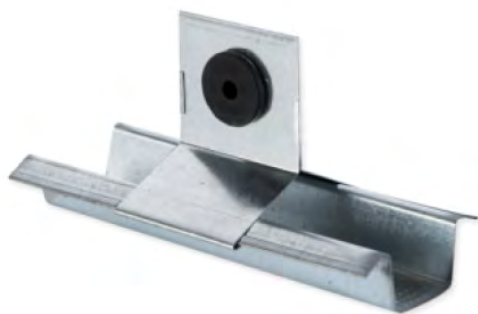
Trailblazing requires confidence, expertise and a desire to do things right. Matt Risinger uses non-combustible, vapor-permeable and water-repellent COMFORTBOARD™ to help wall assemblies dry to the outside, keeping clients

comfortable inside. It cuts down on heat loss and improves energy efficiency so that what you build today positively impacts your business tomorrow.

COMFORTBOARD™ has received ICC-ES validated product acceptance as continuous insulation for multiple applications. For more information visit [rockwool.com/comfortboard](https://rockwool.com/comfortboard)







**Soprema's Acoustivibe is a sound mitigation product that puts a new spin on typical resilient channel construction. Rather than attaching metal furrings directly to wood beams or joists, Acoustivibe adds rubber insulators to absorb shocks and vibrations.**



new build, a product like Quiet Rock might be preferable to resilient channel construction on walls and ceilings, a more time-consuming approach that uses metal strips to separate drywall from the framing to dampen sound transmission.

"In a rebuild or renovation situation, sometimes the builder has to almost demolish walls and reinsulate to get the sound resistance they want," Norman adds. "With this product you can just remove the trim and install it right over

Resilient channel is a common approach taken by builders to reduce the transmission of impact noise through ceilings, especially in multi-unit structures. Soprema's Acoustivibe is a sound mitigation product that puts a new spin on typical resilient channel construction. Rather than attaching metal furrings directly to wood beams or joists, Acoustivibe adds rubber insulators to absorb shocks and vibrations. Says Duhamel: "You don't screw the furring to the joist and the drywall directly to the

Another innovative sound reduction product is Soprema's Acoustiboard. This recycled wood fibre insulating board can be used both as a flooring underlayment, to reduce the transmission of impact noise, or as a dampening layer between studs and gypsum board to improve the STC of standard drywall partitions. In a flooring application, Acoustiboard eliminates the need for a concrete top layer over the wood structure.

"Finding ways to eliminate excess weight from other parts of the structure is important in B.C. because the Building Code calls for larger shear walls to resist seismic loads," Duhamel says. "If the architect can save weight elsewhere in the structure by eliminating concrete topping and address sound mitigation at the same time, that's a huge benefit."

Regardless of the quality of the building materials, however, poor construction methods can still result in a flanking noise problem within buildings.

"Flanking noise is often overlooked by contractors," Norman points out. "Sound is like water: if there is air going through or around the wall, the sound will find a path."

"Flanking noise has nothing to do with soundproofing materials," adds

“”

**You don't screw the furring to the joist and the drywall directly to the furring, so the rubber insert eliminates hard contact between the drywall and the joist; it eliminates impact noise almost completely.**



the existing wall and you're done. So you avoid the cost of removing old drywall, insulating, then reinstalling new drywall."

furring, so the rubber insert eliminates hard contact between the drywall and the joist; it eliminates impact noise almost completely."





SEALANTS & ADHESIVES  
THAT DELIVER HIGH  
PERFORMANCE  
WITHOUT THE RISKS



Duralink



Novalink



M1



The curb systems



Duhamel. “If the contractor doesn’t pay attention to tight construction, you can lose lots of ASTC points because of loose joints between the walls, the ceiling and the floor. The connections have to be airtight for the soundproofing materials to do their job.”

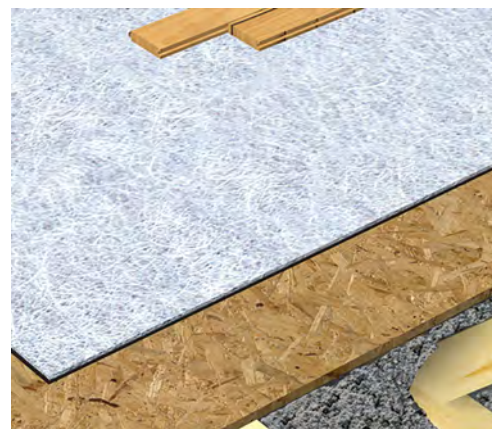
Along with making solid connections between structural members, Norman says contractors can help mitigate flanking noise by using acoustic sealants on all joints and mechanical openings: “Sealant is the cheapest component, but it is also one of the most important; if sealant is used correctly it can make the wall system airtight, and a good acoustic sealant will remain pliable over time and keep absorbing sound.”

While there are plenty of sound-mitigating building materials on the

**Soprema’s Acoustiboard is a recycled wood fibre insulating board that can be used both as a flooring underlayment, to reduce the transmission of impact noise, or as a dampening layer between studs and gypsum board to improve the STC of standard drywall partitions.**

market, it is important to note that no single product can completely eliminate sound transmission within a building. Specially designed materials used in combination will certainly improve the ASTC rating between rooms in a structure. And used in combination with tight construction techniques, those materials can create a highly sound-resistant, if not soundproof, building.

“Architects and builders usually have a number in mind that they want to



achieve in terms of sound resistance, but a lot of factors play a role in getting to that number,” says Duhamel. “In the end, it is the entire built assembly that will tell you how sound resistant the structure is. So you have to know how materials will work together to mitigate the type of sound you want to mitigate, rather than any one single component. There are products out there that will say they can give an STC of 72 or 73, and that’s just impossible.”

“Every building project is constrained by the same three factors—space, time and budget, and these factors apply directly to sound mitigation as well,” adds Norman. “The contractor always has to start with client needs and expectations; does the client expect there to be zero sound transmission within the structure, or just as little as possible within their budget? What kinds of sounds does the client want to mitigate and how can the builder achieve that in the most cost-efficient way? Once you know what you want to do in terms of sound mitigation, there are products and materials that can help you do it.”

## Core Acoustics

**There is no industry that has benefitted more from advancements in sound remittance technology than construction.** Today there is a wide array of innovative sound- and vibration-dampening products and materials available for builders to utilize, both at the rough framing and finishing stages of a project. But when it comes to finishing products and materials, manufacturers have to combine effective sound remittance with pleasing aesthetics.

One such innovative building material that strikes this balance is CLIPSO acoustic fabric. This highly micro-perforated polyester knit material comes in rolls ranging from 6’6” to 16’8” wide and 164’ long. When secured on walls or ceilings, the fabric helps absorb sound in large interior spaces, and when combined with acoustical batting, can achieve Noise Reduction Coefficients of 1.05. CLIPSO acoustic fabric features a durable, washable polyurethane coating that can be coated with several stock and custom colours or printed with high-resolution digital, stock or custom images. (Visit [www.clipsoceilingwall.com](http://www.clipsoceilingwall.com))

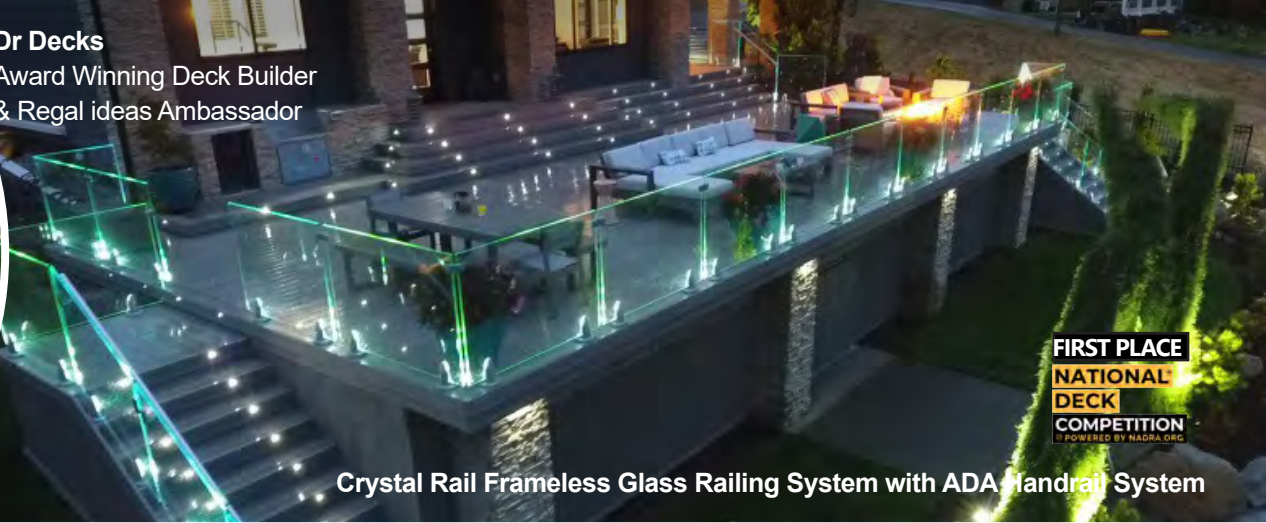
Two other finishing options that utilize micro-perforations are Topperfo acoustic panels and planks from TopAkustic. These solid and multi-layer acoustic wood products use 0.5mm holes to create highly effective sound-absorbent cladding. These products can be used for removable or fixed ceilings and walls with visible joints, as well as for cabinet fronts and room dividers. The texture of these absorptive boards and tongue-and-groove planks can be tailored to project requirements, and unlike other perforated acoustic cladding, Topperfo uses laser technology to create more precise holes and spacing. (Visit [www.topakusticusa.com](http://www.topakusticusa.com))







**Dr Decks**  
Award Winning Deck Builder  
& Regal ideas Ambassador



**FIRST PLACE**  
**NATIONAL**  
**DECK**  
**COMPETITION**  
POWERED BY NADRA.ORG

Crystal Rail Frameless Glass Railing System with ADA Handrail System



**SECOND PLACE**  
**NATIONAL**  
**DECK**  
**COMPETITION**  
POWERED BY NADRA.ORG

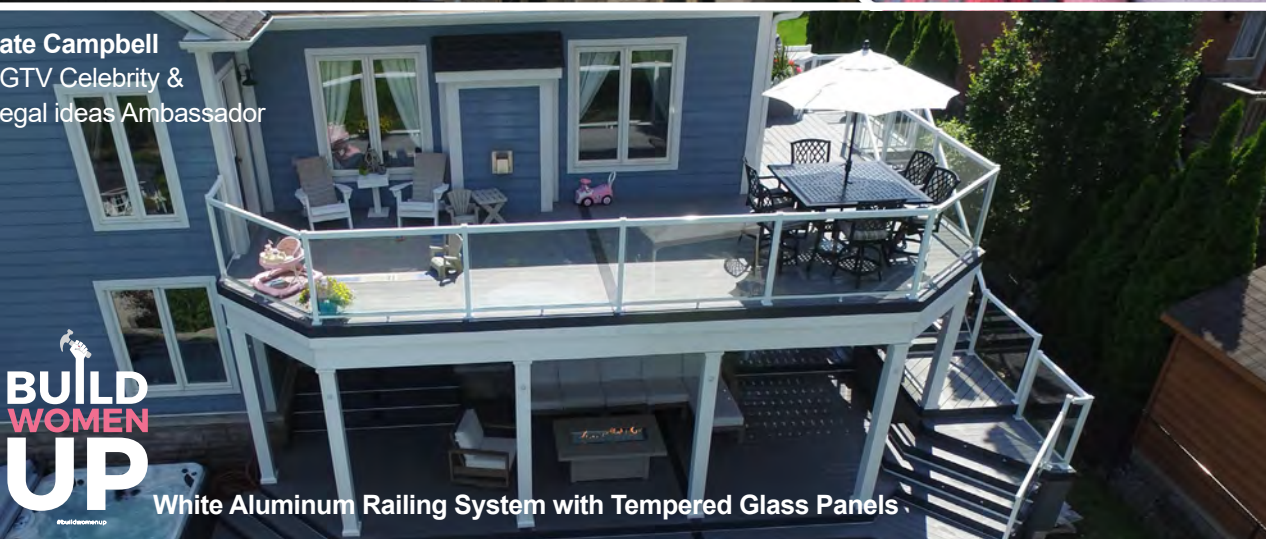
Crystal Rail Frameless Glass Railing System



**The Brolaws**  
HGTV Celebrities &  
Regal ideas Ambassador



**Kate Campbell**  
HGTV Celebrity &  
Regal ideas Ambassador



**BUILD**  
**WOMEN**  
**UP**  
#buildwomenup

White Aluminum Railing System with Tempered Glass Panels

**The Railing Brand of Choice for Homeowners,  
Contractors and Builders!**

**Regal ideas**





CABOT BLUE



URBAN BLUE



BOULDER GREY

# In **LIVING** Colour COLOUR INSPIRATION

At Kaycan, we believe that colour has the power to bring your dream home to life. That's why we take the time to track design trends, shifts in demographics and their impact on architecture.

This upcoming year, colour trends reflect the current push towards darker, richer shades. The following colours are predicted to be the most sought after in 2019.

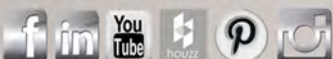
Rest assured your colours will stay as bold and true as when they were first installed on your home. Our commitment to colour has led our research and development team to develop **Helios™ Technology**, allowing homeowners everywhere to indulge in darker vinyl siding shades..

## 2019 COLOUR TRENDS:



# KAYCAN

[www.kaycan.com](http://www.kaycan.com)



Armor For Your Home



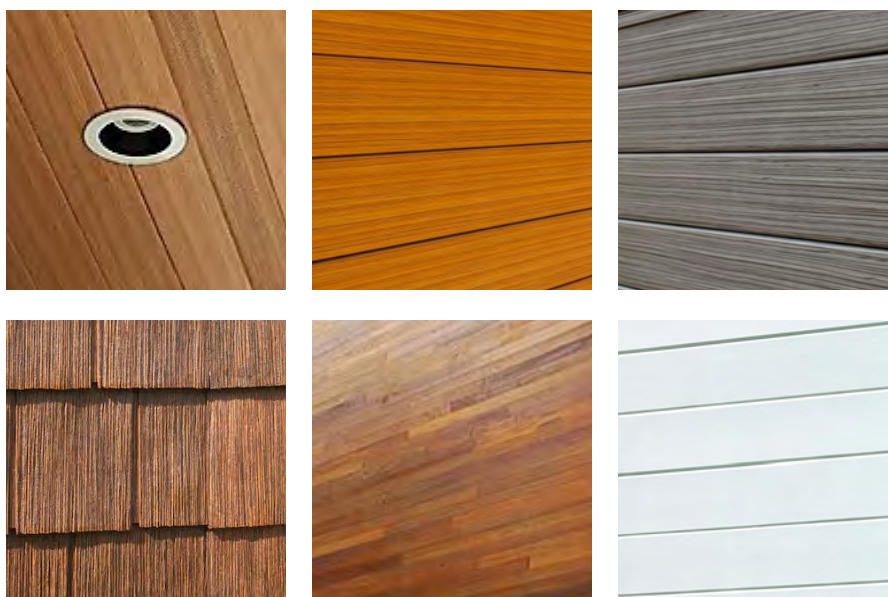


# Fine Finishes



Exterior finishes are the icing on any renovation, and Slegg has plenty of materials, styles and colours for your clients to choose from





**There are few construction materials that have benefitted more from advancements in technology than exterior finishes.**

Back in the good old days, exteriors could be finished with brick, natural stone or wood siding, then options became a little more interesting, in terms of both colour and style, with the advent of aluminum and vinyl siding. Today, thanks to advancements in chemical coatings, concrete and polymer materials and image printing technology, homeowners can revel in a wide array of materials to finish off their home that are better looking and more durable than ever.

“Of course you can still choose natural materials for an exterior finish, but there are composite materials now that look and feel just like stone, brick or wood,” says architect Art Finlayson of Saanichton-based Finlayson Bonet Architecture. “And with so many options, people are finding ways to use different materials as accent pieces on the exterior of the home.”

That might mean combining natural stone sections with composite wood panels, or using cedar shakes to create an accent area in combination with another material, rather than covering an entire wall with one thing.

“Another big change for exterior finishes has been in the way they are installed,” Finlayson adds. “Many of the new materials—composite wood, shingles or even stone--go up in 4-, 8- or 10-foot panels, so it’s easier and more cost effective for installers to use them. Plus the Building Code now calls for a rain screen on the building exterior, so there has to be a gap behind the finish material, whatever it is, to allow moisture to drain. Many new materials are designed with that in mind.”

Regardless of what exterior material, style or colour your client might have in mind for their home, they will certainly find what they’re looking for among Slegg’s incredible selection of finish products from the industry’s leading manufacturers.





SAGIPER



## SAGIPER

[www.sagipernorthamerica.com](http://www.sagipernorthamerica.com)

Edmonton-based Sagiper North America manufactures a range of PVC cladding solutions for exterior walls and soffits. The SagiWall siding line and SagiRev soffit and ceiling product lines offer several profile styles to achieve classic and contemporary looks.

"The extruded PVC is maintenance free and doesn't break down in extreme temperature conditions," says Michael Arezes, Regional Sales Manager at Sagiper. "You also don't have to worry about things like rotting, mould, rusting or denting, and insects aren't an issue. So you can have the look of wood or metal without the challenges that come with those materials."

Sagiper siding is coated with a multilayer Solar Shield film that absorbs more than 95 percent of UV radiation,

and all products come with a 50-year warranty. SagiWall siding is available in a variety of wood tones, including oak, redwood, cedar, maple and walnut, as well as several metallic finishes. Two finished profiles are available: the more traditional "Channelled" profile, which has a 1-cm gap between boards; and the cleaner, more contemporary "V-Groove" profile, which has a 4-mm gap.

"Our wood grain products look and feel like real wood," adds Arezes. "For example the cedar is smoother and has a minimal grain, while the oak is thicker and has more texture."

In terms of installation, Sagiper products install like traditional vinyl siding, with a tongue and groove process fastened with screws. The boards can be cut with a mitre or table saw, and no clips or special clips are required.



## NICHIHA [www.nichiha.com](http://www.nichiha.com)

The Nichiha line of fibre cement cladding products offers a range of styles for exterior and interior residential, commercial and institutional applications. The line includes factory primed boards, shakes, wall panels, board and batten, and trim and soffit accessories.

"One of the biggest benefits of our brand is our innovative stainless steel clip mounting system," says Andrew Winter of ILA Marketing Group, which markets the Nichiha brand. "The clip system keeps the cladding 10 millimetres away from the wall, which creates a built-in rain screen. The hidden-fastener option also means you don't have to put screws or nails through the face of the product, which improves

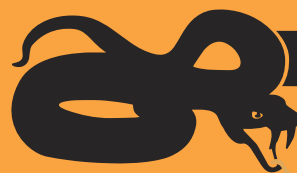
**Continued on page 53...**





## TYPAR CO-LABEL MetroWrap Opportunity!

- **COMMERCIAL GRADE**
- Great exposure for your business
- 12 months UV protection (2x competition)
- 5 x stronger than the competition!



**VIPERVENT**



## Ridge Vent

- Designed with ultra-low profile, nearly invisible when installed
- Superior edge strength for uniform installation
- Easily centered
- Lightweight and easy to install
- Available in a variety of widths and lengths

Contact your local representative for details!



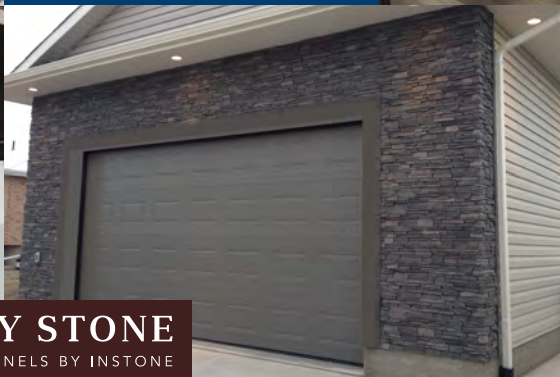
**AS-IS BRAND**  
WOOD PANELS BY INSTONE



**hourwall**  
DESIGNER PANELS BY INSTONE



**QUALITY STONE**  
EASY-INSTALL PANELS BY INSTONE



- ✓ Interior
- ✓ Easy to install panels
- ✓ Less than 1 lb/ft<sup>2</sup>
- ✓ Low waste



- ✓ Exterior & Interior
- ✓ Easy to install panels
- ✓ less than 1 lb/ft<sup>2</sup>
- ✓ Up to R6+ Insulation
- ✓ Low waste

- ✓ CLIMATE  SHIELD

# INSTONE

instoneproducts.ca  
877.477.4373





## A TRADITION OF INNOVATION

As the inventor of fiber cement siding, innovation has always been at the core of the James Hardie business. From the creation of the HardieZone® System and our pre-finished ColorPlus® Technology, to the unrivaled investment in research and development, we continue to push the boundaries of building products. And we are proud to continue this tradition of innovation into 2019 with the following products coming soon:

- **STATEMENT COLLECTION™** products: Carefully curated James Hardie ColorPlus® siding and trim styles, textures, and colors specifically for your market, locally stocked, and designed for simplicity.
- **DREAM COLLECTION™** products: Featuring a color palette of over 700 ColorPlus® technology finishes, made to order in a wide array of James Hardie® siding and trim styles.
- **THE ASPYRE COLLECTION BY JAMES HARDIE™** brings together contrasting elements of Artisan® siding and the Reveal® Panel System for one-of-a-kind home designs, offering a new line of flat wall siding profiles for a modern spin on traditional siding options.





NICHIIHA



the look and helps keep moisture out.”

The Nichiha line is available in 12 different finished profiles, including metal, high-gloss wood, stucco, concrete and brick. The products are available in a variety of colours and Nichiha can deliver custom colours based on a standard paint catalogue. Thick half-inch construction and quality coatings help resist rotting, warping, pests and heavy weather.

In addition to the Nichiha line, ILA Marketing also offers the Diamond Kote line of engineered wood siding. Available in lap siding, board and batten, and shake styles, Diamond Kote carries a 30-year, no-fade warranty and features a Zinc-Borate coating that repels insects mould and mildew.

“Diamond Kote is an extremely low-maintenance option; it’s like putting

composite decking on your walls,” says Winter. “It’s also a very simple system to put on; each piece has a hail fin so you are not going back to touch up nail holes and protruding nails. It is also lighter than standard 16-foot lap siding and installs 22 percent faster.”

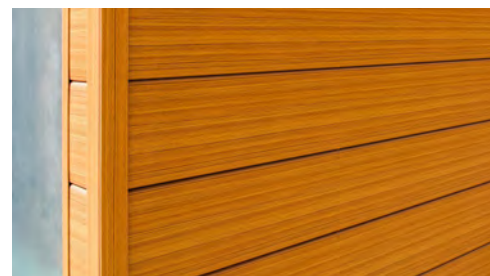
### LUX [www.luxpanel.ca](http://www.luxpanel.ca)

Customers looking for a contemporary look for the exterior of their home or building will find plenty to interest them in the LUX Architecture Panel line of steel cladding and architectural products. The LUX line includes V-groove wall panels, soffit, fascia and trim components made of coated, 24-gauge steel.

“Our panels and architectural components are generally used as a feature element on the exterior of the building to compliment other exterior finishes, like stone or wood,” says Jesse Sherburne, Director of Marketing and Design for LUX. “It doesn’t have to be painted or stained and it’s maintenance-free; you can clean it with a hose.”

In terms of installation, LUX steel panels and trim components incorporate flanges that attach to the exterior of the building using simple metal screws. Panels and components can also be made to measure at the factory, eliminating waste and speeding up the installation process. All LUX steel components feature a Galvalume

LUX







## THE FUSION STONE DIFFERENCE

LIFETIME GUARANTEE • INCREASE YOUR EQUITY • AFFORDABLE • INDOOR & OUTDOOR • MAINTENANCE FREE



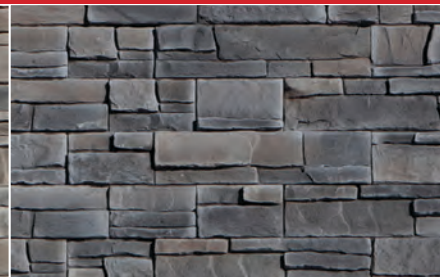
GREAT LAKES: BRINDLE



GREAT LAKES: RAVEN



GREAT LAKES: FAWN



GREAT LAKES: CARBON



DRY-STACK: CARAMEL



DRY-STACK: CHARCOAL



PENINSULA LEDGESTONE: CYPRUS



PENINSULA LEDGESTONE: GROTTO



Fusion Stone features a patented stainless steel clip and screw system that can be installed in any weather by anyone for a lifetime of maintenance free performance.



coating, a zinc-aluminum alloy that provides superior corrosion resistance and excellent heat reflectivity.

Within the line there are 37 woodgrain, metallic and textured options and 19 solid colour options to choose from.

“Our wood grain finishes are achieved using a four-colour etching process that creates a warm, realistic look,” adds Sherburne. “You can get pretty much any wood look you could want, from cedar and cherry to walnut or white oak, and it adds a great feature element or accent piece to the exterior.”

## SHAKERTOWN

[www.shakertown.com](http://www.shakertown.com)

Shakertown has been a leader in the cedar shingle category since 1954 and was the first company to introduce the cedar shingle panel to the market. The panels feature true random-width Western Red cedar shingles bonded to a CC-exterior grade backing.

“Our shingle panels install like lap siding but the end result looks just like individual cedar shingles,” says Mark Rutledge Operations and Sales Manager



for Shakertown. “But the panels come in eight-foot lengths that are self-leveling, so they install ten times faster than individual cedar shingles.”

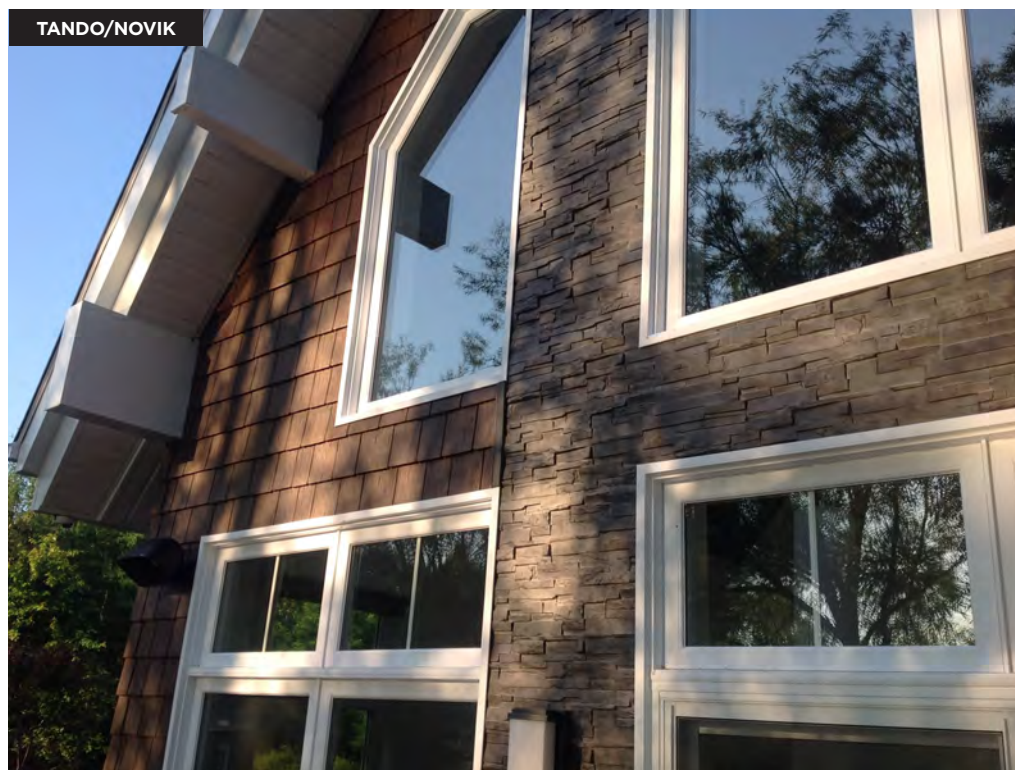
The shingles themselves are available in 12 pre-finished colours, and customers can also choose unfinished, primed or painted finishes and natural, sanded or groove-faced textures.

In addition to cedar its shingle panels, Shakertown recently introduced a line of clear vertical-grain cedar tongue-and-groove paneling under the Dolly Varden brand name. This product features a cedar facing bonded to a seven-ply engineered panel. Available in seven- to 20-foot lengths and six- and four-inch widths with a tight- or loose-line facing, Dolly Varden panels come unfinished or pre-stained. The built-in rain screen provides 98-percent drainage efficiency, and because the panel is so dense it provides better R-value than other siding options.

“The engineered panel makes it stronger and more durable than solid cedar and it goes up faster than traditional tongue and groove,” adds Rutledge. “Plus there is less spoilage when you are installing because it doesn’t twist or crack.”

## TANDO/NOVIK [www.tandobp.com](http://www.tandobp.com)

Slegg supplier Derby Building Products is well-positioned to take advantage of the trend toward mixed-material exteriors with its Tando and Novik brands of composite shake and stone panels. Both product lines are designed to deliver the look and texture of natural wood and stone with much







# Belgard now available at Slegg Building Materials

belgard.com | expocrete.com

## New for 2019 INTRODUCING ZENWALL

Slegg Building Materials is making the outside your kind of beautiful with Belgard Pavers, Walls and Elements.

Start your inspirational journey at your local Slegg dealer to browse the outdoor displays or click onto [Belgard.com](http://Belgard.com).

Ask for a complimentary 3D rendering of your outdoor project courtesy of **Belgard Design Studio**.



### BELGARD OUTDOOR LIVING

Tandem Wall | Lafitt Grana Pavers | Mega-Libre Pavers



# CHOOSE THE BEST DECKS

AZEK® and TimberTech® offer high performance, low maintenance decking and rail. Both brands out perform wood, have a limited 30-Year Fade and Stain Warranty and are resistant to mold, mildew and moisture damage.

## BENEFITS OF TIMBERTECH DECKING:

- 25 Year Limited Residential Warranty
- Extreme Strength with a Realistic, Wood-Like Feel
- Highly Durable & Easy to Maintain
- Mildew, Moisture, Stain, Scratch & Insect Resistant
- Will Not Splinter, Rot, Crack or Warp
- Compatible With Traditional & Hidden Fasteners
- Four Sided Protective Polymer Cap
- Made from Over 73% Post Industrial Recycled Material

## BENEFITS OF AZEK DECKING:

- Limited Lifetime Residential Warranty
- Highly Durable & Easy to Maintain- Mold, Mildew & Moisture Resistant
- Stain, Scratch & Insect Resistant
- Will Not Splinter, Rot, Crack or Warp
- Superior Heat Dissipation
- Compatible With Traditional & Hidden Fasteners
- Polymer Core Capped—Premium Alloy Armour Technology™

Standard colors in stock at Slegg. Wide variety of additional colors available by special order with a short delivery time.



Although AZEK and TimberTech deck products are cooler to the touch than many other deck board products in similar colors, all decking products will get hot in the sun. Additionally, the darker the decking color, the hotter it will feel. For hotter climates, consider choosing a lighter color.

# AZEK

# TimberTech

## ENGINEERED TO LAST BEAUTIFULLY



Deck shown in TimberTech Legacy in Pecan with Mocha Accents.  
Evolutions Rail in Traditional Walnut.





**BOLD.  
TIMELESS.  
DURABLE.**

[www.luxpanel.ca](http://www.luxpanel.ca)



is an Authorized LUX  
Distribution Partner



easier installation and upkeep, and both incorporate the same polymer base material that is unaffected by moisture and pest infestation.

“In the past, exteriors tended to be monotone from ground to roof,” says John Vukanovich, Vice President of Marketing for Derby Building Products. “Now we are seeing materials that complement one another—siding, stone, metal, brick, engineered wood. Tando and Novik products are designed to achieve that complementary look.”

In terms of installation, Tando and Novik shakes and stone cladding products can be applied by standard installers, without the need for special tools or trades. Tando shakes come in eight-foot panels with the overlap built in; each panel requires just seven nails to install, compared to up to 40 nails that would be needed to cover the same area with individual shakes.

“Our system has a built-in moisture drainage system, so no rain screen is required,” Vukanovich adds. “And because these products are moisture-



proof, you can run them right to the ground; with other siding and cladding products you have to have a gap of at least six inches to avoid moisture creeping up the wall.”

#### **KAYCAN** [www.kaycan.com](http://www.kaycan.com)

For the last 45 years, Kaycan has been providing the construction industry with a range of vinyl, aluminum and engineered wood siding and trim products. Along with its Kaycan brand siding and trim, the company markets engineered wood siding under the KWP brand and cement-based stone veneer under the Versetta Stone brand.

Kaycan has an impressive inventory of products, styles and colours to choose from for customers interested in exploring the vinyl siding category.

“Vinyl is an attractive option for lots of homeowners because it offers lasting performance without the premium price; and because it’s so easy to install, it means big productivity for installers,” says Tara Warner, Content Marketer and Social Media Specialist for Kaycan. “We offer lap and vertical siding options, as well as polypropylene shakes. In terms of styles, there’s lots to choose from—Cape Cod, colonial, contemporary, traditional—in everything from bright to deep colours and woodgrains and even metallic finishes.”







# QUALITY ROOFING INSTRUMENTS FOR ROCKSTAR PERFORMANCE

**Be a Rockstar** when you install Polyglass' premium membranes featuring patented ADESO® Technology. These innovative, self-adhered membranes are manufactured with a dual-compound technology using "true" SBS formulation on top and an aggressive, self-adhered formulation on the bottom side of the reinforcement. Most ADESO Technology self-adhered membranes feature patented SEALLap® adhesive treatment. Polyglass' self-adhered, granulated cap sheets also feature patented FASTLap®, a granule-free end lap. Learn more at [polyglass.ca](http://polyglass.ca) or contact 800.222.9782.





# Westform Metals

- LIMITED 40 YEAR WARRANTY.
- AESTHETICS OF WOOD COUPLED WITH THE BENEFITS ONLY STEEL CAN PROVIDE.
- 100% RECYCLABLE.
- LOW MAINTENANCE.
- AVAILABLE IN A VARIETY OF NATURAL, AUTHENTIC WOODGRAIN PATTERNS.
- OVER 40 SOLID COLOR OPTIONS AVAILABLE IN SMP AND PVDF FINISHES.
- NON COMBUSTIBLE 24 AND 22 GAUGE THICKNESSES.

## Proboard 4 & 6

Proboard 4 Solid   Proboard 4 Perforated   Proboard 6 Solid   Proboard 6 Perforated

PVDF Printech  
Woodgrain series

Acorn

Espresso

Saddle

Gunstock

Autumn

Frontier

Barnboard

[www.westform.com](http://www.westform.com)



KAYCAN



Kaycan has been at the forefront of product development in the vinyl category. All Kaycan products utilize proprietary chemical technologies that provide superior fade resistance and durability. The company's vinyl formulation incorporates PVC resin for weatherability, impact modifiers and stabilizers for durability and high pigment saturation to make colours last.

"Our products are designed to withstand all kinds of extreme weather," adds Warner. "For example, our Helios thermal diffusion agent protects the siding from distortion caused by the sun, which is ideal for the new dark colour trends for home exteriors."

# Good fences make good neighbours!

Largest selection of highest quality fence panels on Vancouver Island.



1282 Alberni Hwy, Parksville, BC V9P 2C9 (250) 248-5922 • [AquilaCedar.com](http://AquilaCedar.com)

*Vancouver Island owned and operated*



## STILL CREEK FOREST PRODUCTS

[www.realcedar.com](http://www.realcedar.com)

In spite of all the innovation in the area of exterior finishes, there are still some customers who prefer traditional materials, and one of the classic exterior finishes is cedar. Coquitlam-based Still Creek Forest Products offers a full line of western red cedar lumber products grown and manufactured in British Columbia. This includes bevel and channel siding of various lengths for tongue-and-groove and board-and-batten installation.

“One of the great things about cedar is that it is a flexible product,” says Larry Siemens, a Cedar Specialist with Still Creek. “With lots of composite products, you get what you get. But with cedar, if the customer or the architect comes up with a unique design idea, it’s not hard to custom cut cedar boards and to achieve different sizes or angles or a different tongue-and-groove. Whatever your imagination can come up with, we can get there.”

Another attractive feature of cedar, Siemens argues, is its rich, warm natural colour. “There is no single colour of

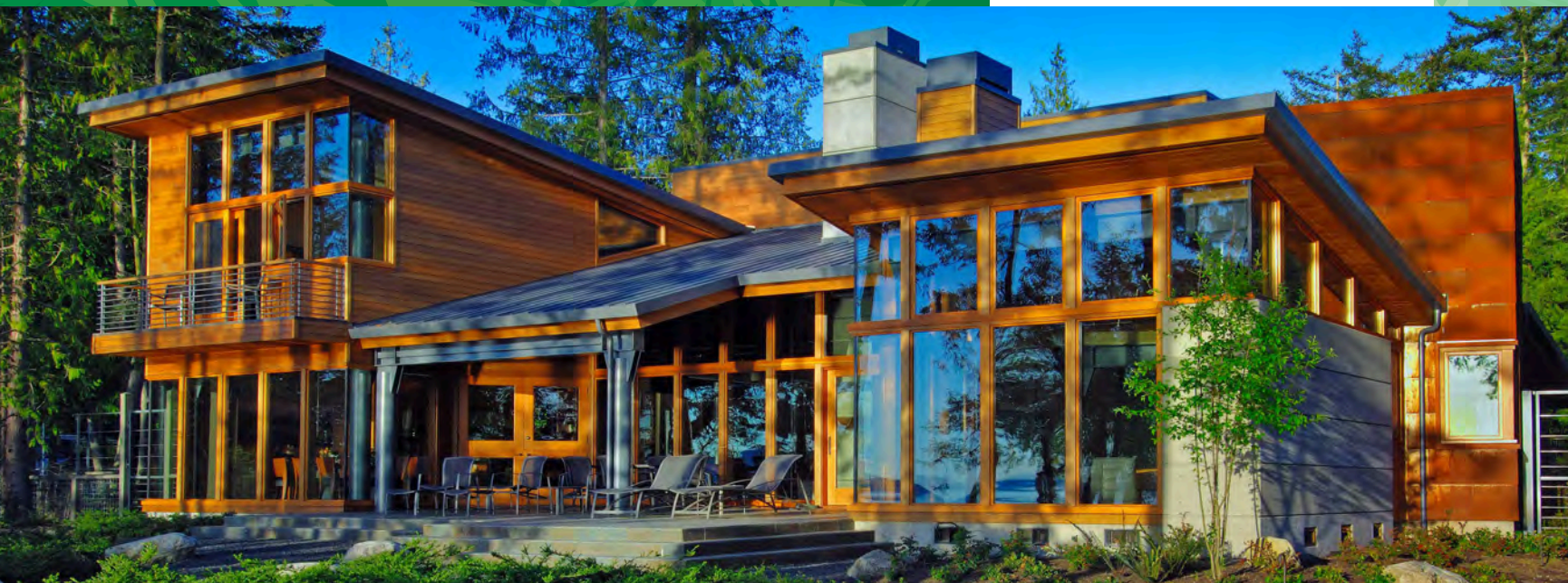
cedar, that’s the beauty of it; cedar can have blond hues, tones of red, even dark chocolate browns.”

As a completely natural product, cedar siding is also a renewable resource, which can be an attractive feature for some homeowners. As one of the most rot and insect resistant woods, cedar is well-suited to the damp climate of the west coast, and it installs like any standard wood siding.

“When composite cladding came out, contractors started to move away from cedar, but its popularity is growing again,” Siemens says. “If you’re talking about building or renovating a showpiece home, there is just no other look like it.”







SPECIALIZING IN  
**Western Red Cedar and more...**  
*since 1977*



- Trim
- Moulding
- Porch
- Decking
- Railing
- Pavers



- Decking
- Railing
- Lighting
- Fastening



- Stocking over 650 items of the best quality Western Red Cedar



JAMES HARDIE



## JAMES HARDIE

[www.jameshardie.ca](http://www.jameshardie.ca)


James Hardie invented fibre cement siding and has been the leading brand in the category for decades now. In fact, it's safe to say there are likely few if any contractors out there who haven't worked with the company's products at some point. James Hardie offers an array of fibre cement products including lap siding, vertical panels, shingles, boards, soffit and trim in a range of styles and colours to fit any exterior design aesthetic.

"Whatever look the homeowner is going for—Colonial, Cape Cod, Farmhouse, Contemporary—we have products to do that," says Josh O'Keefe, B.C. Sales Manager for James Hardie Building Products. "You can get siding that is smooth for a more modern look or with any kind of wood grain texture. But fibre cement is great because you get the look of wood without the maintenance."

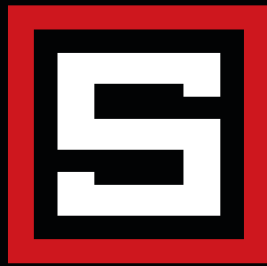
Siding can come primed for painting from the factory or pre-painted using the company's proprietary ColorPlus



technology. The ColorPlus process involves applying multiple coats of paint (more than field applied paint) to each board that are then baked on. This results in a finish that provides greater resistance to fading, chipping and cracking. With the company's new custom colour option, called the Dream Collection, O'Keefe says customers can choose from up to 700 additional colours. "There is the potential for customers to get any colour they want, same as at the paint store."

This year James Hardie has added a more modern looking, flat-wall product to its Artisan lap siding line. Called Milled Artisan, this product is designed to achieve the look of tongue and groove wood in four distinct contemporary profiles. 





# SLEGG

## BUILDING MATERIALS

*A GMS COMPANY*

## ENGINEERED WOOD PRODUCTS

[www.slegg.com/engineered-wood-products](http://www.slegg.com/engineered-wood-products)



- \* High-quality Engineered Wood Products (EWP) to provide you with the greatest stability, reliability and a superior end product
- \* Engineered designs are specific to your project's needs and you reach longer spans, save time, use less waste and lower overall costs
- \* Our experienced design technicians work hand in hand with customers, engineers and architects to produce designs that conform to architectural and structural design requirements

**Request your EWP design package at any Slegg contractor desk**



# STRONGER TOGETHER

LEADER IN  
ENGINEERED  
WOOD PRODUCTS



**NORDIC**  
STRUCTURES

VISIT US TO LEARN ABOUT OUR  
ENGINEERED WOOD PRODUCTS  
[nordic.ca](http://nordic.ca)



# The winning line-up

## Vancouver Island's top construction companies brought home the hardware in 2018

**Thousands of top quality construction and renovation projects are completed on Vancouver Island each year.**

But with so much work to be done, most companies don't have time to stand back and admire a completed project before moving on to the next one. Luckily there are three award programs that throw a spotlight on the excellent design and quality workmanship achieved by the Island's top companies - CARE, VIBE and Georgie.

The Construction Achievements and Renovations of Excellence, or CARE, Awards are given out annually by the Victoria Residential Builders' Association to recognize Victoria's finest homes and the skilled people behind them. Similarly, the Vancouver Island Building Excellence, or VIBE, Awards, sponsored by the Canadian Home Builders' Association - Vancouver Island, showcase the best in residential construction, design and renovation on the Island. Finally, the Georgie Awards, sponsored by the Canadian Home Builders' Association - British Columbia, celebrate excellence in home building across the province. The following companies were all acknowledged last year by these award programs, and Slegg Building Materials is proud to have played a part by supplying many of the quality building products and materials used in these winning projects.







## LIDA HOMES

VICTORIA, B.C.

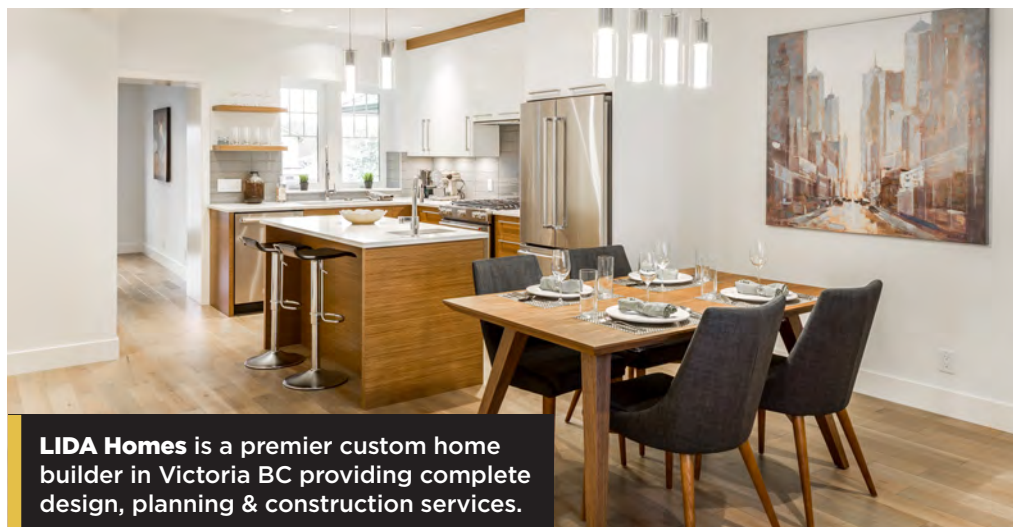


### Victoria-based Lida Homes had to clear out some extra space in the trophy cabinet last year.

Along with winning three gold VIBE Awards, Lida projects were also acknowledged at the CARE and Georgie Awards. Founded in 2009, the 15-person company focuses on high-end custom homes and renovations in Greater Victoria. Of all the projects completed by the company last year, according to company CEO and president Dave Stevens, one gold-medal winner in particular stands out.

"We are really proud of a complete renovation we did of a turn-of-the-century duplex that was boarded up and condemned," says Stevens. "There were actually people breaking into it and sleeping at night. When I first rolled up to it, all I could say was 'Wow', how are we going to turn this into something that represents our brand?"

Although the building had been abandoned for years, it did sit in a prime location in a trendy Victoria neighbourhood and the developer had high hopes of turning it into a desirable rental property. Before that could happen however, Steven says a bare-studs restoration was required.



**LIDA Homes is a premier custom home builder in Victoria BC providing complete design, planning & construction services.**

"We had to replace about 75% of the studs and beams inside to bring the building back up to Code," Stevens recalls. "But we had to keep the outer dimensions the same in order to preserve the zoning on the building,

which the developer wanted to do. The problem was the building was out about a foot from front to back on the foundation, so it took a lot of craftsmanship to rebuild it without taking down the exterior walls."





# THE GUST STOPS HERE.

**Get 2x the bond strength and 209 KM/H / 130 MPH wind resistance.**

**SEE THE STRIP. TRUST THE GRIP.**



Aggressive weather calls for aggressive hold. SureNail Technology® delivers exceptional wind resistance, with 2x the bond strength of standard shingles and 209 KM/H / 130 MPH wind limited warranty performance\*. It's outstanding protection available only on Owens Corning® Duration® Series shingles.

**See SureNail Technology® in action at [TrustTheGrip.com](https://www.TrustTheGrip.com).**



THE PINK PANTHER™ & © 1964-2019 Metro-Goldwyn-Mayer Studios Inc. All Rights Reserved. © 2019 Owens Corning. All Rights Reserved. SureNail Technology® is not a guarantee of performance in all weather conditions. SureNail Technology® is available only on Owens Corning Duration® Series Shingles. \*SureNail Technology® is proprietary with U.S. and foreign protection including U.S. Patent Nos. 6,471,812; 7,836,654; 8,156,704; 8,181,413; 8,240,102; 8,430,983; 8,607,521; 8,623,164; 8,752,351; 8,991,130; 9,121,178; and other patents pending. SureNail Technology® is not a guarantee of performance in all weather conditions.





**Bernhardt Contracting** are leaders in energy efficient construction and energy efficiency consulting in Victoria, B.C. and Canada.



**The highlight of the year in 2018 for Bernhardt Contracting was winning two VIBE Awards—for the same project.** The Victoria company won for Best Environmental Initiative and Best Townhouse Development for a double duplex development with an energy efficient twist.

“From the outside it looks like any other new duplex,” says owner Mark Bernhardt. “What makes the project different is it is a Net-Zero build that utilizes ‘Passive House’ techniques.”

Bernhardt believes the Passive House building approach is the most affordable way to achieve the Net-Zero energy efficiency standard. It calls for using as much insulation as possible in all areas of the structure to minimize energy loss. Solar panels are then added to capture energy to get to Net-Zero, the point at which the total amount of energy consumed is roughly equal to the amount generated.



Bernhardt says building to the highest energy efficiency standard has been a passion at the company for some time. When they built their first Passive House project eight years ago, Bernhardt Construction was one of only a handful of companies in British Columbia using the technique.

“Passive is the best efficiency solution; it is beyond Step 5 of the Code, so anything that is Passive will easily meet the Code in 2032,” he explains. “We started using it because it makes sense; it’s scientific and measurable. We plan to



be in this building years from now, so we need to think of where the Code is going, where the market is going and what clients are going to want down the road.”





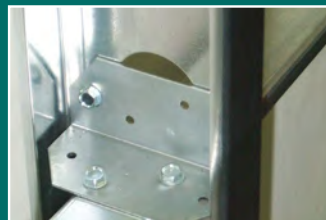
Providing innovative  
building solutions for  
over 69 years.



DRYWALL TRIMS



DRYWALL FRAMING



CLIPS



ROOFING TRIMS



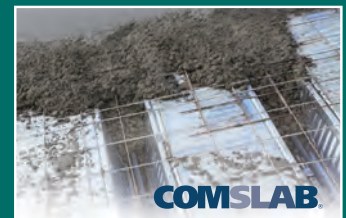
STRUCTURAL FRAMING



ACCESSORY PRODUCTS



SPECIAL SECTIONS



COMPOSITE CONCRETE  
FLOOR SYSTEM

[www.bmp-group.com](http://www.bmp-group.com)

- [sales@bmp-group.com](mailto:sales@bmp-group.com)



**GT Mann** has built their reputation on the design and construction of exceptional, quality homes on Southern Vancouver Island.



**GT MANN**  
VICTORIA, B.C.



**For Graeme and Trevor Mann, construction has always been in the blood.** The brothers grew up working in the excavating business started by their grandparents, so they were well prepared when they struck out on their own in their early 20's to build spec homes. That was 11 years ago, and now GT Mann has a well-earned reputation as a custom home builder on the Island.

"We learned pretty early how important it is to be organized and line things up on a job," says Graeme Mann. "If you get that part right, things will generally come together well in the end."

Things certainly came together well for GT Mann last year, when the company earned an impressive eight gold CARE Awards. The awards were spread over a variety of categories and were all related to three very distinctive custom home projects. These included a traditional-style, one West Coast contemporary and one ultramodern, Malibu-style. Due to topographic and



architectural considerations, these projects presented unique challenges.

"One was right on the water's edge on sandy soil, so we had to drive 68 piles down to the gravel bed and basically build the structure on those to make it stable," Graeme explains. "Another was a four-storey structure build right



into a 60-foot vertical rock face, so we had to do some blasting to make that happen. And the traditional home had things like a curved staircase, coffered ceilings and extensive paneling and wainscoting throughout. They were all really challenging from a construction perspective, but lots of fun."





# BUILDER'S CHOICE

SHOWER DOOR ■ INNOVATIVE GLASS

## BYPASS

Shower & Tub Doors



- ✓ Easy clean design
- ✓ Convenient through glass towel bars
- ✓ Luxurious 10mm tempered safety glass
- ✓ Clean chrome finish

## HARMONY

Shower & Tub Doors



- ✓ Elegant one panel slider
- ✓ Luxurious 10mm tempered safety glass
- ✓ Clean chrome finish ✓ 8" square handle

## SERENITY

Shower & Tub Doors



- ✓ Contemporary style one panel slider
- ✓ Luxurious 10mm tempered safety glass
- ✓ Clean chrome finish
- ✓ 8" square handle

## PIVOT

Shower Door



- ✓ Frameless 6mm tempered safety glass
- ✓ Clean chrome finish
- ✓ 8" through glass handle

## LED MIRRORS

with Perimeter & Vertical Lights



- ✓ Smart touch "on mirror" controls
- ✓ 4 light tone options
- ✓ 4 brightness options
- ✓ Built in anti-fog creates a "steam free" zone
- ✓ Quick and easy installation



**SLEGG**  
BUILDING MATERIALS

Available at all Vancouver Island Locations:

Langford · Victoria · Saanichton · Sidney · Duncan · Salt Spring · Nanaimo · Tofino · Cumberland · Comox

[www.slegg.com](http://www.slegg.com)





**Anyone who has been involved in construction on Vancouver Island for going on the last four decades is almost sure to be familiar with Limona Construction.** Founded in 1981 by partners John Sercombe and Mike Baier, the company has long been a fixture in the spec home market in and around Victoria. That longevity was recognized last year when Sercombe was awarded the CARE Lifetime Achievement Award, with special emphasis being placed on his dedication to the affordable home market.

“Building affordable is something that has always set us apart,” says Sercombe. “We have built more expensive homes, but we really eat and sleep the entry-level category. Building homes average people can afford is something we believe in and have taken to heart as a company.”

“Entry-level homes are a segment of the market where there is always an underlying need, and there are lots of ways you can build more economically,” he explains. “We built a subdivision of small, three-bedroom homes for 56 percent of the cost of an average home in the same market; that’s unheard of.”

Over the years Limona has been responsible for building hundreds of



**Limona Construction** has an impressive track record building many of the larger, single-family housing neighborhoods and waterfront developments on Vancouver Island.



homes in the Greater Victoria area. In fact, the company has constructed entire communities from vacant land, including roads, services, buildings and amenities. Says Sercombe: “You



spend so many years working with your head down, it’s rewarding now to drive through some of the neighbourhoods we built and see people using the parks and the trails.”





**Falcon Heights Contracting had quite a year in 2018.** Not only did the Victoria-based custom home builder win numerous local and provincial awards, including Builder of the Year and Project of the Year (VIBE), but the company was also awarded gold for Best Net Zero Home at the Canadian Home Builders' Association (CHBA) National Awards for Housing Excellence.

"It's an honour to be recognized nationally for one of our projects here on Vancouver Island," says company founder Dave MacKenzie, who operates Falcon Heights with his wife, Joelle Bienvenue. "That project was also the



**Falcon Heights Contracting is proud to be the first CHBA certified Net-Zero Builder on Vancouver Island.**

first home in Canada certified as net-zero under the new CHBA guidelines and the first in Canada to get the top "zero" rating under the new NRCan labelling

process for energy-efficient homes."

The winning project, which is a West Coast contemporary waterfront home located in Saanich, features timber



# Taymor®

*Trusted Canadian brand since 1948*

DOOR HARDWARE  
BATH HARDWARE  
FAUCETS

**taymor.com**





frame construction with curved beams and glass and plenty of stunning ocean views from multiple terraces.

“Because we wanted to incorporate as much glass as possible in the design, it



took eleven rounds of modelling to get the structure to net-zero,” MacKenzie explains. “The homeowner wanted the house to be energy-efficient and withstand seismic loads, so we had to find ways to do that and stay within the budget; it was a challenge.



“This home might be exceptional now, but net-zero is where we’re going. The BC Step Code is moving builders toward the inevitable just over 10 years from now when you won’t be able to build a new home in Canada that isn’t net-zero. It’s exciting to be on the cutting edge of that.”



# Taymor®

*Trusted Canadian brand since 1948*

DOOR HARDWARE  
BATH HARDWARE  
FAUCETS

[taymor.com](http://taymor.com)





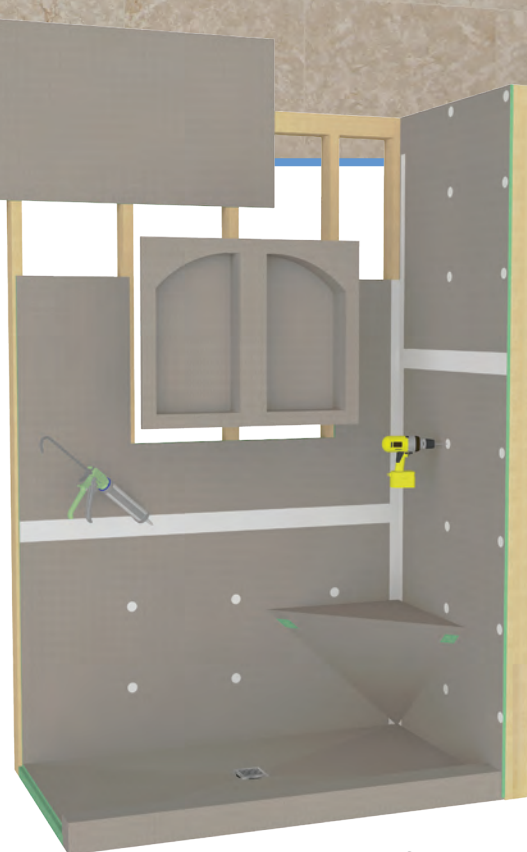
**COST-EFFECTIVE,  
EASILY INSTALLED** and  
ready for **STONE** or **TILE**  
in only a **FEW HOURS**

# HYDRO-BLOK™

The BETTER Shower System

Introducing HYDRO-BLOK, a high-quality, easy-to-install and highly-customizable system to create tile-ready showers.

- 100% waterproof HCFC-free XPS closed cell foam
- Strong & lightweight system can take only hours to install
- Water test & start tiling within an hour of completion
- Standard or single-slope barrier-free shower pans available
- Innovative hidden linear drain system available
- 10-year manufacturer warranty ■ Residential or commercial



HYDRO-BLOK now available through



DISTRIBUTED BY

**HUARD**  
GROUP



discover more online at  
[www.hydroblok.com](http://www.hydroblok.com)

SHOWER PANS   LINEAR DRAIN SYSTEM   SHOWER CURBS   PAN EXTENSIONS   WALLBOARD   NICHES   SHOWER SEATS   SHOWER RAMPS





## MJ CHAHLEY

NANAIMO, B.C.




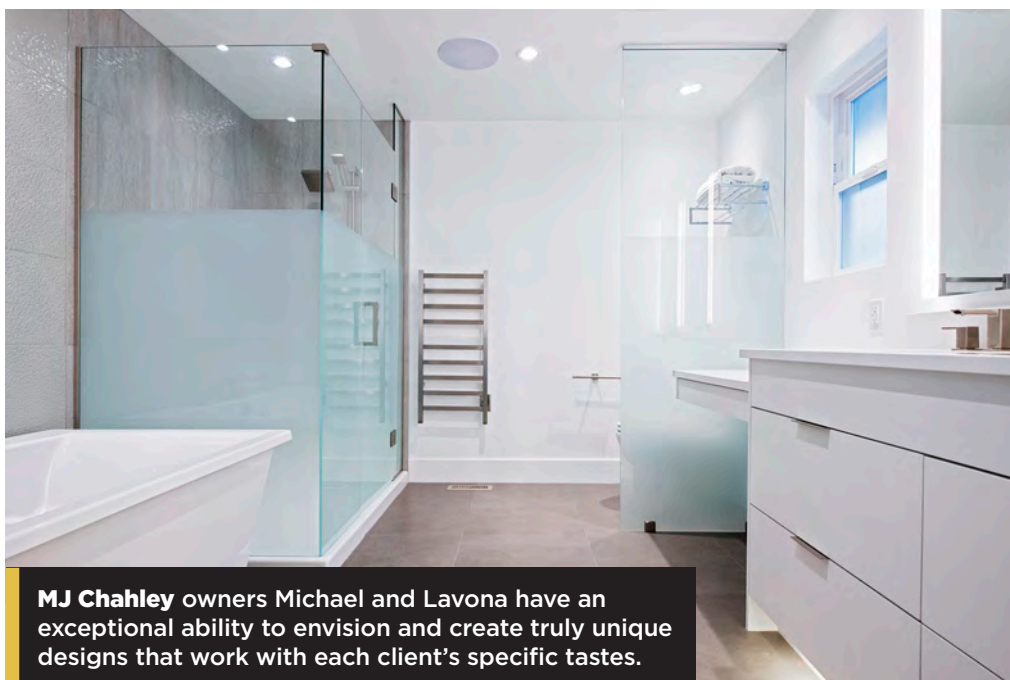
### Experience is clearly a driving force behind the enduring success of Nanaimo-based MJ Chahley Construction Group.

After all, co-owner Mike Chahley has been involved in the Vancouver Island construction industry since 1985, when he became a red seal ticketed carpenter. That experience was rewarded once again last year when the company earned three VIBE nominations for its Fire Dance renovation project—Best Kitchen Renovation Over \$75K, Best Residential Renovation Over \$300K, and Best Bathroom Renovation Over \$30K.

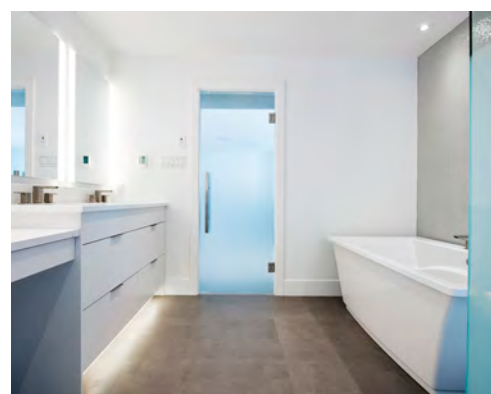
“The clients were a retiring couple who wanted a bright, airy, energy-efficient Smart home,” says co-owner Lavona Chahley. “The challenge was the renovation had to respect the existing exterior footprint of the structure and maintain the beautiful landscaping of the property. We also had to remove some walls to make the space more inviting and take advantage of the incredible ocean views.”

MJ Chahley ended up taking home the VIBE for Best Bathroom Renovation. Featuring Italian porcelain tiles throughout, this winning custom ensuite is situated between spacious ‘His-and-Hers’ dressing room closets. The bathroom itself utilizes fritted glass pivot doors and panels to create privacy areas as needed between bathing, showering, water closet and vanity areas. Other key features of the design include in-floor radiant heating, a built-in makeup table, brushed nickel, water-wise fixtures, dual under-mount sinks and a deep island tub.

“The goal was to create a luxury hotel spa feel,” Lavona explains. “The design respects privacy while allowing for His-and-Hers use.” 



**MJ Chahley** owners Michael and Lavona have an exceptional ability to envision and create truly unique designs that work with each client's specific tastes.







# Strength through **diversity**



Imperial Manufacturing Group of Richibucto, NB, is pleased to announce that it has come to an agreement with Fusion BP Product and Steelform Building Products Canada to acquire the assets related to supplying the Canadian market with outstanding quality and performance building materials. These two companies will be merging into a new company called Imperial Building Products (IBP) a subsidiary of Imperial Manufacturing Group (IMG).

## **Imperial Building Products (IBP)**

- IBP will be headquartered in Richibucto, New Brunswick
- IBP will be a Coast-to-Coast National Steel Stud Manufacturer.
- IBP customers will be serviced by two divisions:  
Fusion BP (East) and Steelform (West).

## **Fusion BP (East)**

- Headquarters in Montreal
- Manufacturing facilities in Montreal and Toronto

## **Steelform (West)**

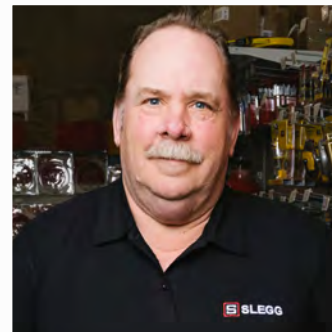
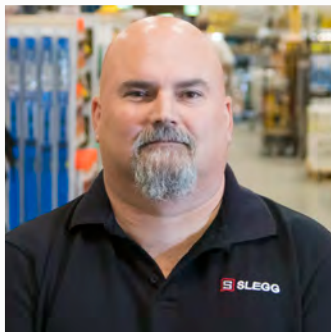
- Headquarters in Edmonton
- Manufacturing facilities in Vancouver, Edmonton and Toronto
- Sales offices in Montreal, Austin, Texas, and Atlanta, Georgia



[www.imperialbp.ca](http://www.imperialbp.ca)







# No substitute for experience

**Personal relationships and a commitment to excellence drive Slegg's veteran employees**

**After almost three-quarters of a century in business, Slegg Building Materials clearly knows what it takes to build long-term relationships with customers, especially contractors. One of the key elements behind long-term customer relationships is long-term employees.**

While things like quality products and competitive pricing are essential for any business that lasts, they are not enough on their own. Consistent customer service is just as important.

In fact, it is often the personal relationships that regular customers develop over time with key employees that keep those customers coming back. Slegg has a number of employees who have been with the company for decades, and pro customers throughout the Island have come to depend on their experience and deep product knowledge. If you don't already know them, we'd like you to meet just a few of Slegg's longest-serving team members.



# Create Exceptional Outdoor Living Spaces with Fast Driving, Code Approved ÜberGrade Fasteners from GRK™



## R4™ Multi-Purpose Framing Screws

**ACQ**



*Frame with Ease and Confidence*



## RSS™ Rugged Structural Screws



*Speedy Lag Bolt Alternative with Immense Drawing Power.*



## FIN/TRIM™ Trim Head Screws



*Smallest Head on the Market for a Clean Finish.*



## KAMELEON™ Composite Deck Screws



*No Pre-Drilling.  
No Mushroom Effect.*

**TREX SELECT® APPROVED**

## Drive with Speed, Quality and Confidence

**FASTER INSTALLATIONS-** no pre-drilling. Innovative, patented features are specially designed to reduce torque and bite instantly for effortless fastening.

**NO STRIPPING, NO SPLITTING, NO HEAD POPS-** no wasted time on the job site. High tensile, torque and shear strength allow for immense drawing power out performing most other competitive fasteners.

**BUILDING CODE APPROVED-** for structural use in treated lumber. All GRK screws have been evaluated for structural and AC257 corrosion resistance to be in compliance with IBC/IRC specifications. That's why all our fasteners come with a limited lifetime warranty, so you can rest assured your installations will withstand the test of time.



*Visit Our Website For More Information  
and to Find a GRK Dealer Near You.*

800.263.0463 [WWW.GRKFASTENERS.COM](http://WWW.GRKFASTENERS.COM)







Peter Moonen

## Peter Moonen

### GENERAL MANAGER Slegg Comox

Most people start their careers working from the ground floor up, but Peter Moonen can say his career at Slegg started from the lumberyard up. Today, Moonen is General Manager of Slegg's Comox store, but he joined the company back in 1991 as a general labourer.

"I started out working in the yard, stacking lumber and keeping things clean and tidy for the trucks to come in and out," Moonen recalls. "After a while I became a forklift operator, building orders, loading and unloading trucks and helping customers pick lumber in between."

Over the years there have been few jobs at Slegg that Moonen hasn't tried. He drove a delivery truck taking orders to job sites, then moved into the shipping department. After that came a spell in commodity purchasing, ordering bulk loads of lumber, plywood and other building materials. Along the way he developed strong relationships with many professional customers,

which made him a perfect fit for a job in contractor sales. In 2008, he moved to Slegg's Cumberland location as General Manager, but returned to Comox in 2016 to take his current position.

"In a smaller market like Comox, you get to know the regular customers on a first-name basis; it's great to have a chat and a laugh while you help them with their projects," Moonen says. "I have lots of long-term professional customers and now I see their sons and daughters coming in and working their way up in the trades. It's a great atmosphere to work in; I can honestly say there's never been a day when I grumbled about going in to work."

## Jeremy Anderson

### CONTRACTOR SALES Slegg Nanaimo

A lot can change in three decades, and Jeremy Anderson, a 30-plus-year Slegg veteran, has certainly seen his share of changes, both in the company and on Vancouver Island. Anderson started working in the warehouse at Slegg's Sidney store back in 1988. He soon moved over to the service counter, then on to purchasing and selling bulk building materials to builders. That range of experience made him an expert in lumber, drywall, roofing supplies, tools and delivery logistics.



Jeremy Anderson



# REALTRIM<sup>TM</sup> TREATED

BY WOODTONE

Wood trim featuring an advanced Two-step treated sealant with industry leading results



## INTERIOR AND EXTERIOR PRODUCTS - BUILT TO LAST.

We believe everyone should live in a great looking home that lasts a lifetime.

We are passionate about providing high quality and durable products, giving you confidence and peace of mind.



Stop by your local Slegg location or visit [Slegg.com](http://Slegg.com) for more information.

**WOODTONE**  
inspired living, *inside and out*

800-663-9844  
[woodtone.com](http://woodtone.com)



Wall + Ceiling Collection by Woodtone  
Wood Tongue and Groove Paneling Products



RusticSeries by Woodtone  
Two-tone Composite Siding Product



Anderson says one of the biggest changes in his career came in 1993, when he was recruited by Slegg to move up to Nanaimo to help establish the company's new store there. The problem was there was no actual store at the time.

"There were only three construction sheds on the site then, with piles of lumber scattered all over the place," Anderson laughs as he recalls. "We had the phone on a buzzer, so when I was in the yard helping a customer sometimes I would have to run into the office to answer the phone. They were challenging days, but it was lots of fun."

Things have changed a lot since then, of course. Today, Slegg's Nanaimo location includes a large store with kitchen and flooring showrooms, a drive-through lumberyard and separate warehouse space for building materials. Anderson has seen Nanaimo change a great deal as well since the store opened, with the population of the region doubling.

"The town has really grown up around us; it's been interesting to see new subdivisions going up and being a big part of that," he says. "The best part is I've been able to develop friendships with local contractors and builders who have been with us since day one."

## **Gordon Webb** **OUTSIDE SALES** **Slegg Sidney**

Many people have played a big part in building the Slegg brand over the last 72 years, but not many can say they actually built a Slegg store. Gordon Webb is a carpenter by trade and he was hired 34 years ago to help with the construction of Slegg's Sidney location.

"I got to know Ron Slegg and other people in the company while we were building the store," says Webb. "When the job was finished, I stayed on to work in the door shop. It wasn't something I was looking for at the time, but I guess I got talked into it."

Today, Webb utilizes his detailed knowledge of construction to help his contractor sales clients complete their projects on time and on budget. Part of his job includes making sure contractors

keep up with them," Webb explains. "Lots of the changes are centered on moving the province to net-zero energy construction, but individual municipalities are still trying to figure

“”

## **There have been lots of big changes to the Building Code recently, and my professional clients rely on me to keep up with them.**

—Gordon Webb, Outside Sales, Slegg Sidney

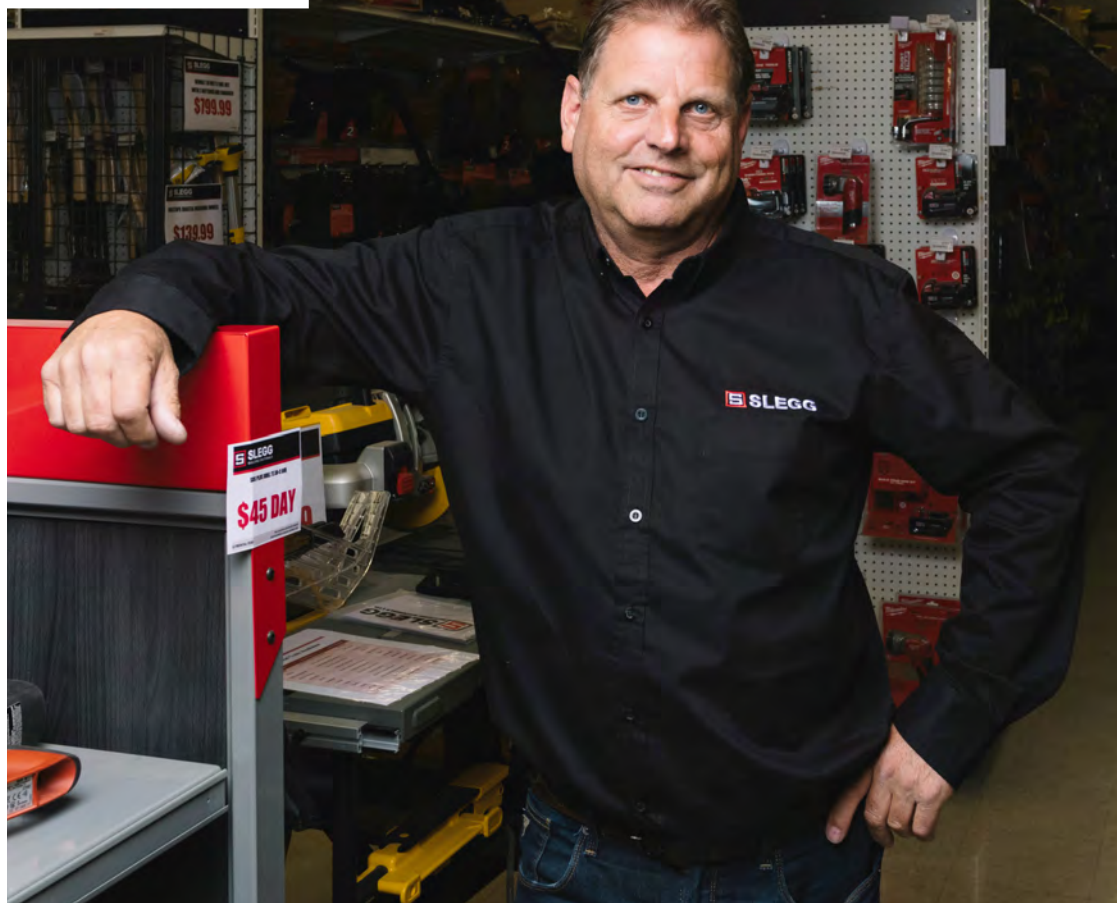
are up to speed on the products and materials that will make their jobs Building Code-compliant.

"There have been lots of big changes to the Building Code recently, and my professional clients rely on me to

out how they are going to do that. There is lots of confusion now about Code compliance, even among building inspectors."

Webb adds that keeping up with Building Code changes and new

Gordon Webb





Any contractor will tell you that getting materials to the jobsite on time and in good condition is as important as any other part of the job. That's why Slegg puts so much emphasis on product delivery, using the latest and greatest delivery trucks, training staff



WWW.SLEGG.COM 



on materials handling, and hiring and keeping the best delivery drivers.

Steve Eisan has been one of those Slegg delivery drivers for over 25 years now. He began his career with the company in the warehouse building large orders for delivery, but soon moved on to the road. These days he operates one of the company's boom trucks, often delivering large loads of drywall to high-rise buildings up to 80 feet tall.

"You have to be certified by the province to operate any crane device, so our drivers all receive special training appropriate for the delivery vehicle they operate," explains Eisan. "Obviously, we get lots of rain and high winds on the Island, so you really depend on your training, and common sense,

when it comes to dealing with certain conditions."

Eisan's delivery routes have taken him to some pretty remote jobsites over the

committed to making sure the customer gets their order.

"I see lots of the same contractors day after day; I know them personally and I

“”

**You have to be certified by the province to operate any crane device, so our drivers all receive special training appropriate for the delivery vehicle they operate.**

—Steve Eisan, Boom Truck Driver, Slegg Admiral

years, some requiring a ferry or a dirt track through the woods to get there. But regardless of the challenges he may face with any given delivery, Eisan is

know how they depend on us," he says. "That's why I'll always do whatever I can to get the order there on time and in one piece."



**kēvo**™

Touch-to-Open® Smart Lock

**GENERATION 2**

- Contemporary design
- Touch-to-Open® convenience
- Smaller and sleeker metal interior
- Improved install experience

**WEISER**®  
HOME SMART HOME™

Open your world with the latest Touch-to-Open® Kevo smart lock

powered by your smartphone and Bluetooth.

[www.WeiserLock.com](http://www.WeiserLock.com)





# MATERIALS THAT MATCH YOUR REPUTATION



No matter what the building structure, DuPont™ Tyvek® Building Envelope Solutions offer an ideal balance of properties to help effectively seal the building envelope. Tyvek® building products provide a wide selection of air, water and thermal management options for helping to protect single family homes, commercial structures and multi-family buildings ranging from duplexes to high-rise apartments. With more than 35 years of experience working with architects, builders, engineers and installers, the DuPont™ Tyvek® team of specialists and certified installers is committed to working with you to protect your next generation of construction projects.

Tough. Tested. Proven. | That's DuPont™ Tyvek® Building Envelope Solutions.

[construction.tyvek.ca](http://construction.tyvek.ca)

FOR  
GREATER  
GOOD™

Copyright © 2017 DuPont. All rights reserved. The DuPont Oval Logo, DuPont™, For Greater Good™ and Tyvek® are trademarks or registered trademarks of E.I. du Pont de Nemours and Company or its affiliates.





Ian McArthur

## Ian McArthur SALES MANAGER

### Slegg Corporate

Slegg Sales Manager Ian McArthur is based at the company's Langford location, but his job takes him all over the Island. He spends many of his days on the road conducting jobsite visits with contractors and builders, quoting projects and introducing them to the latest tools and building materials.

"We feel it's really important for all our sales team members to get out and meet face-to-face with customers in the field," McArthur explains. "It gives us a chance to show them new things that can give them an edge over their competition, but it also gives us a chance to build a rapport with them."

McArthur actually started out at Slegg back in 1995 as a security guard, manning the front gate at the Admirals Road store. From there he moved on to selling residential and commercial doors before graduating to inside then outside contractor sales. As the company evolved, McArthur took on the role of category manager. He developed a comprehensive knowledge of materials like drywall, steel

studs and insulation—"I think I've handled just about everything we've got."

McArthur's travels have given him a front-row seat to watch Vancouver Island grow and develop, and these

days he says he sees more potential for the construction industry on the Island than ever.

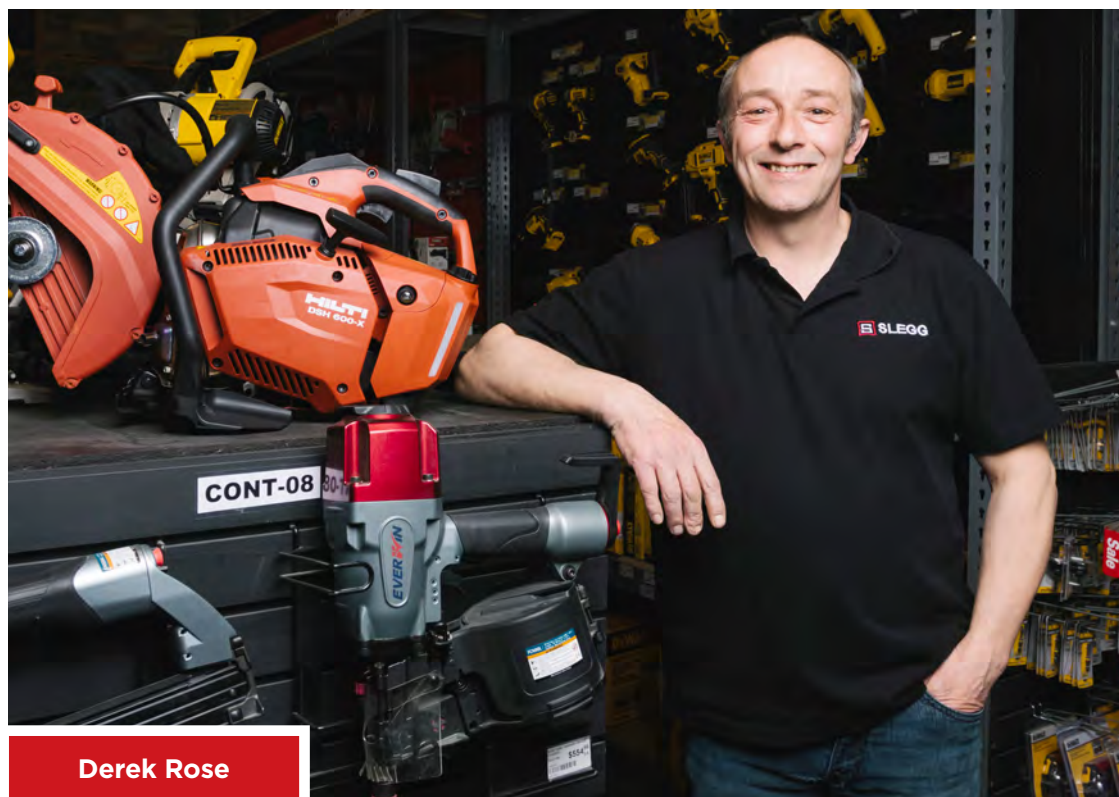
"Victoria and the larger communities throughout the Island have always been recession proof, but now the whole Island is strong," explains McArthur. "We're seeing a boom in commercial and multi-family residential construction as well as housing starts; we're looking forward to a really good year."

## Derek Rose COUNTER SALES

### Slegg Admirals Road

If you have ever gone into Slegg's Admirals Road store in Esquimalt you have probably encountered the smiling face of Derek Rose. Rose has worked the front sales counter at the store for 27 years, and he knows almost all the pro customers by name.

"I'd say there aren't a lot of contractors in town who I don't know; that's just the nature of this job," says Rose. "Besides that, I grew up with a lot of them, so I know them on a personal



Derek Rose



# Engineered Lightweight Steel Framing Solutions



The most  
innovative  
framing  
system of the  
21st century

- Unmatched thermal performance with superior STC ratings
- 15-40% lighter than conventional framing with greater span capability
- Open web design provides maximum flexibility for service installation



Steelform will be merging into a new company called Imperial Building Products (IBP) a subsidiary of Imperial Manufacturing Group (IMG).

## Vancouver

#200, 3168 – 262 Street  
Aldergrove, BC V4W 2Z6  
(604) 381-3981

## Edmonton

4104-69 Avenue  
Edmonton, AB T6B 2V2  
(780) 440-4499

## Toronto

60 Enterprise Road  
Rexdale, ON M9W 1C9  
(416) 245-7006



[www.imperialbp.ca](http://www.imperialbp.ca)



level away from the store. I even go fishing with some of them.”

Working at the same location for almost three decades goes a long way toward building relationships as well. Rose began his career at Slegg working in the lumberyard.

“I drove the forklift and did pretty much everything,” Rose recalls. “I use to do local deliveries as well. Sometimes, if the jobsite was close enough, I’d just load roofing materials or drywall on the forklift and drive it down the road. Today we’ve got crane trucks and booms for that, the best delivery equipment in the business.”

Rose eventually left the yard and moved inside to take over lumber and drywall purchasing. He specialized in the fir and cedar categories and was responsible for dealing directly with the lumber mills. Once he moved to the front sales counter, his product knowledge expanded rapidly—“On the counter you have to deal with every kind of job, so you get to know every product category in the store.”

Rose’s easy-going personality is perfectly suited to customer service; he always has a smile and joke for his regulars. Says Rose: “Dealing with the customers is definitely my favourite part of my job.”

## Mark Rithaler LUMBER SPECIALIST Slegg Salt Spring Island

Customers at Slegg’s Salt Spring Island location probably can’t imagine the store without Lumber Specialist Mark Rithaler. That’s because he has been there longer than the store.

“When I started with the company in 1984 there was no actual store and I was the only employee on the island,” Rithaler recalls. “I basically ran the store out of my house and my truck for about seven years. Customers would call me at home and place orders and I’d deliver them; sometimes I was running around jobsites from 6:00 in the morning until 10:00 at night.”



Mark Rithaler

Things improved a bit for Rithaler in 1989 when the company purchased land to establish a lumberyard that would eventually become Slegg’s Salt Spring location. Still, conditions were far from ideal. “There was just an old shack there when we started, but I liked it because I was getting tired of working out of the house; I used to have to go to the Sidney store to pick up orders, but we eventually added a 13,000-square-foot warehouse.”

While his lengthy experience touches on every aspect of the business, today his work focuses primarily on procuring speciality wood and lumber products for builders throughout the island.

“There is lots of custom home building on Salt Spring Island and they are always looking for high quality fir and cedar and large timbers with lots of custom milling and planing involved,” explains Rithaler. “Customers let me

“”

**Customers let me know what they need and I work with my connections at the mills and pre-stain plants to find it for them.**

—Mark Rithaler, Lumber Specialist, Slegg Salt Spring Island

Rithaler’s career in the building materials industry actually began several years before he joined Slegg. He got his start in high school, working part-time at a local building supply.

know what they need and I work with my connections at the mills and pre-stain plants to find it for them. With high-end wood products, quality and timing are just as important as price.”





**VERSA 7.5** 12"x 24" Truffle



**SOSPIRI** 4.7"x 5.5" NERO / SALVIA



**4D MAX** 16"x 32" DEEP BLUE CHEVRON

**A M E S**  
TILE & STONE  
INSPIRE.DESIGN.CREATE.  
WWW.AMESTILE.COM

PORCELAIN | STONE  
CERAMIC | LUXURY VINYL FLOORING  
MOSAICS | ACCESSORIES

BURNABY . VANCOUVER . CALGARY . EDMONTON . WINNIPEG



# CUSTOM — Your Single Source from the Tile and Stone Installation Leader.



We offer a complete line of installation products for surface preparation, tile set, grout and maintenance. All of our products are formulated to work together and provide durability and high performance.



Look for the lifetime warranty icon on qualifying products so your tile project is covered for life.

For more information, visit our website  
CustomBuildingProducts.com



**CUSTOM**  
TILE INSTALLATION SYSTEMS

## ADVANTAGEONE

READY TO ASSEMBLE  
SOFT CLOSE CABINETS

*Kitchens, Bathrooms, Closets*



## SAME DAY KITCHENS!

**IN STOCK** exclusively at Slegg Building Materials, **ADVANTAGEONE** Solaire white kitchen cabinets and vanities. Complete kitchen and bathroom solutions ready to take home **TODAY!**

Check out a complete list of our doorstyles online at [www.eurorite.com](http://www.eurorite.com) or consult with one of the knowledgeable design staff at Slegg Building Materials.

### What is **ADVANTAGEONE**?

**ADVANTAGEONE** is Euro-Rite's premiere Canadian quality, Ready-To-Assemble cabinet line. We bring over 35 years of precision manufacturing to **ADVANTAGEONE**. A simple, affordable Soft-Close cabinet program that is easy to understand and trust... All in one box!

#### FEATURES AND BENEFITS:

- Soft-Close doors and drawers
- Everything is packaged in one box
- All gable ends are colour matched to the doors
- Simple assembly
- Made in Canada
- Extensive Warranty
- Free design service



*Solaire White Kitchen*



*European Styling. Built Right!*





# KATANA<sup>TM</sup> by MOSO<sup>®</sup>

**DURABLE - STABLE - SUSTAINABLE DECKING**  
 Certified by Wildland Urban Interface (WUI)

**WARRANTY 25 YEARS**

**WUI APPROVED**

**Richelieu** Serving you accross North America  
 CANADA / UNITED STATES  
 TEL: 1 844-433-3354  
 FAX: 1 844-433-3329

**moso<sup>®</sup>** **bamboo products**

[www.richelieu.com](http://www.richelieu.com) / [moso-bamboo.com](http://moso-bamboo.com)

Reily Imagery



**HandiFoam**  
 Completely Professional.

## A better product is just the beginning.

HandiFoam<sup>®</sup> is available as low pressure one- or two-component polyurethane foam sealants, adhesives, pour-in-place and spray foams. These professional grade products offer a trouble-free experience for the contractor and contribute to a better environment.

**ColorWise<sup>®</sup>**  
 TEMPERATURE WARNING NOZZLES  
 AN ICP ADHESIVES & SEALANTS <3> INNOVATION



# COMPLETELY CORDLESS

FROM START  
TO FINISH.



**DEWALT**

CORDLESS  
NAILERS & STAPLERS

**20V<sup>MAX</sup>**  
LITHIUM ION

**XR**  
BRUSHLESS

Tackle **Framing, Flooring** and **Finishing** jobs both large and small with the features of a pneumatic tool and the convenience of cordless. Our compact and lightweight cordless nailers & staplers offer features like tool-free depth adjustment and micro nose for precision nail placement. Brushless motor technology and advanced Lithium-Ion battery packs give you maximum runtime. Cordless Confidence - Guaranteed Tough.

Learn More at [www.DEWALT.ca](http://www.DEWALT.ca)

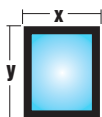
**GUARANTEED TOUGH.®**

Copyright ©2017 DEWALT. The following are examples of trademarks for one or more DEWALT power tools and accessories: The yellow and black color scheme; the "D"-shaped air intake grill; the array of pyramids on the handgrip; the kit box configuration; and the array of lozenge-shaped humps on the surface of the tool. \*\*With respect to the DEWALT 20V MAX\*: Maximum initial battery voltage (measured without a workload) is 20 volts. Nominal voltage is 18.





## WIDEST SELECTION OF CANADIAN MADE SKYLIGHTS



### Largest selection of standard sizes with unlimited custom capability

Our large selection of standard sizes allows you to install the right sized skylight for your application. If required, we have custom sizes available for all glass and acrylic dome models, fixed and venting – manual and electric.



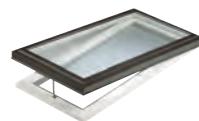
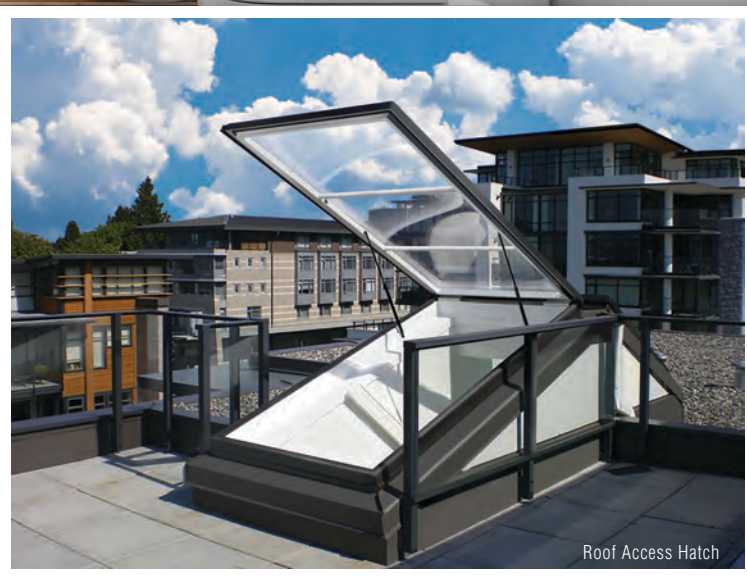
### Widest choice of standard frame colours, plus custom color matching

Why limit yourself to one frame colour? Your skylight should blend in with your roof, not stand out. Choose from 7 standard frame colours we offer, or we can help colour match anything under the sky.



### The Widest selection of Energy Star® certified clear and tinted options

With 8 Energy Star certified LoE<sup>3</sup>-366 glazing options, including multiple triple glazed options and the availability to add laminating glass and/or NEAT (low maintenance) coating onto all glazing options, Columbia continues to be the energy efficiency leader in the Canadian skylight industry.



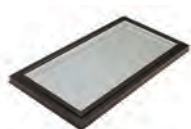
Venting Curb Mount



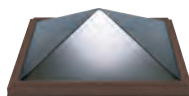
Roof Access Hatch



Wood Deck Mount



Fixed Curb Mount



Acrylic Pyramid



Circular Roof Dome



Flex Sun Tube



Rigid Sun Tube







# ADVERTISERS

COMPANY	WEBSITE	PAGE
<b>3M</b>	www.3M.com	28
<b>Abbotsford Concrete Products</b>	www.pavingstones.com	10
<b>Alliance Door Products</b>	www.AllianceDoorProducts.com	16
<b>Ames Tile &amp; Stone</b>	www.amestile.com	92
<b>Aquila Cedar Products</b>	www.aquilacedar.com	62
<b>AZEK/TimberTech</b>	www.azek.com	57
<b>Bailey Metal Products</b>	www.bmp-group.com	72
<b>Basalite Concrete Products</b>	www.basalite.ca	4
<b>Belgard</b>	www.belgard.com	56
<b>Bissett Fasteners</b>	www.bissettfasteners.ca	30
<b>Bosch</b>	www.boschtools.com	17
<b>Builder's Choice Shower Door</b>	www.bcshowerdoor.com	74
<b>CGC Inc.</b>	www.cgcinc.com	2,99
<b>Columbia Skylights</b>	www.columbiaskylights.com	96
<b>Core Acoustics</b>	www.coreacoustics.ca	40
<b>Custom Building Products</b>	www.custombuildingproducts.com	92
<b>DEWALT</b>	www.dewalt.ca	95
<b>Diablo Tools</b>	www.diablotools.com	27
<b>DuPont</b>	www.construction.tyvek.ca	88
<b>Euro-Rite</b>	www.eurorite.com	92
<b>Fusion Stone</b>	www.fusionstone.ca	54
<b>GRK Fasteners</b>	www.grkfasteners.com	82
<b>Halo</b>	www.buildwithhalo.com	41
<b>Handi-Foam</b>	www.icpgroup.com	94
<b>Hilti</b>	www.hilti.ca	24
<b>Hydro-Blok</b>	www.hydroblok.com	78
<b>Icynene</b>	www.icynene.ca	22
<b>Imperial Building Products</b>	www.imperialbp.ca	80
<b>InStone</b>	www.instoneproducts.ca	51
<b>James Hardie</b>	www.jameshardiepros.com	52
<b>Kaycan</b>	www.kaycan.com	47

COMPANY	WEBSITE	PAGE
<b>Logix ICF</b>	www.logixicf.com	35
<b>LUX Architectural Panel</b>	www.luxpanel.ca	58
<b>Makita</b>	www.makita.ca	86
<b>Malarkey</b>	www.malarkeyroofing.com	23
<b>Masonite</b>	www.masonite.ca	11
<b>Metrie</b>	www.metrie.com	34
<b>MicroPro Sienna</b>	www.MicroProSienna.com	8
<b>Milgard</b>	www.milgard.ca	6,7
<b>Milwaukee</b>	www.milwaukeetool.ca	20
<b>Nordic Structures</b>	www.nordic.ca	67
<b>Norske</b>	www.norskertools.com	26
<b>Owens Corning</b>	www.owenscorning.ca	38,70
<b>Polyglass</b>	www.polyglass.ca	60
<b>PowerHouse Building Solutions</b>	www.powerhousebuildingsolutions.com	51
<b>PPG</b>	www.ppg.com	14
<b>Regal Ideas</b>	www.regalideas.com	46
<b>Resisto</b>	www.resisto.ca	44
<b>Richelieu</b>	www.richelieu.com	94
<b>Rockwool</b>	www.rockwool.com	42
<b>Rymar</b>	www.rymar.ca	12
<b>Slegg Door Shop</b>	www.slegg.com	100
<b>Slegg Engineered Wood Products</b>	www.slegg.com/engineered-wood-products	66
<b>Steelform (IBP)</b>	www.steelform.ca	90
<b>Still Creek Forest Products</b>	www.realcedar.com	64
<b>Taymor</b>	www.taymor.com	76,77
<b>Trimlite</b>	www.trimlite.com	33
<b>Velux</b>	www.velux.ca	32
<b>Weiser</b>	www.weiserlock.com	87
<b>Westform Metals</b>	www.westform.com	61
<b>Weyerhaeuser</b>	www.weyerhaeuser.com/osb	16
<b>Woodtone</b>	www.woodtone.com	84



# CONVERSATION STARTER

Slegg customers, suppliers and employees have some great stories to tell



**Steve Conroy**  
**DIRECTOR OF MERCHANDISING**  
Slegg Building Materials

☎ 250.478.5509

✉ S.Conroy@slegg.com

“Our people have defined this company and our culture for the past 70-plus years—I would like to thank our Slegg team for their hard work, dedication and continued commitment to our customers.”

**When Slegg launched *Island Builder* last year, our goal was to create a useful resource for our professional customers throughout Vancouver Island.**


We also hoped to start a conversation with our customers about issues facing our industry, construction trends affecting their business and products and building materials that can help them make more money. As we wrap up our third issue, I'm happy to say the response we have received to date has been excellent.

In this edition we endeavoured to continue that trend. One of the most important issues facing professional contractors every day—the most important—is jobsite safety. In “Safety First and Always” (page 18) we examined two of the most dangerous construction jobsite hazards – silica dust and falls from height. Airborne silica dust generated by cutting, chiselling and breaking up concrete masonry and siding is a constant threat on many jobsites; we explore these topics from a WorkSafe BC perspective, and investigate ways to mitigate the risks. Falls, meanwhile, remain the most common source of workplace injury, so we felt it was important to explore fall protection options that allow professionals to safely work at heights.

As we move into the busiest time of the year for many contractors, we find our professional customers want to learn more about the renovation trends and products available to them to differentiate their projects. In “Fine Finishes” (page 48) we explore the amazing selection of exterior siding and cladding products there is

to choose from on the market today. Regardless of the look your client may be after, they are sure to find what they are looking for from one of Slegg's quality vendors.

In “The Winning Line-up” (page 68) we were honoured to showcase some of the many award-winning projects created by some of the leading developers and contractors on Vancouver Island – the professionals we are proud to serve in our stores every day. We highlight some of the projects and companies that were honoured with VIBE, CARE and Georgie awards in 2018, and we hope to help them get back on the podium again this year.

Finally, in “No Substitute for Experience” (page 81), it was also an honour—and a lot of fun—to familiarize our customers with a few of our longest-serving employees. As you can see from their profiles, many of our employees boast decades of experience in the building supply industry. Just as important, they have spent years building great relationships with our customers and doing everything they can to help them succeed. Our people have defined this company and our culture for the past 70-plus years—I would like to thank our Slegg team for their hard work, dedication and continued commitment to our customers. 



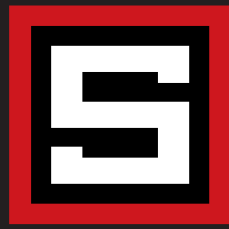


## PERFORMANCE AND CONSISTENCY. BY THE PROS. FOR THE PROS.

Introducing NEW CGC Synko® Brand Pro Series Fill and Finish Joint Compound.  
A professional fill and finish that matches your reputation.

[cgcinc.com](http://cgcinc.com)





# SLEGG

BUILDING MATERIALS

A GMS COMPANY

## THE ISLAND'S DOOR SHOP

2901A Sooke Road, Langford 250.386.3667



- Industry-leading Manufacturing Equipment
- Custom Made Products
- Residential / Commercial
- Vast Selection



Taymor.

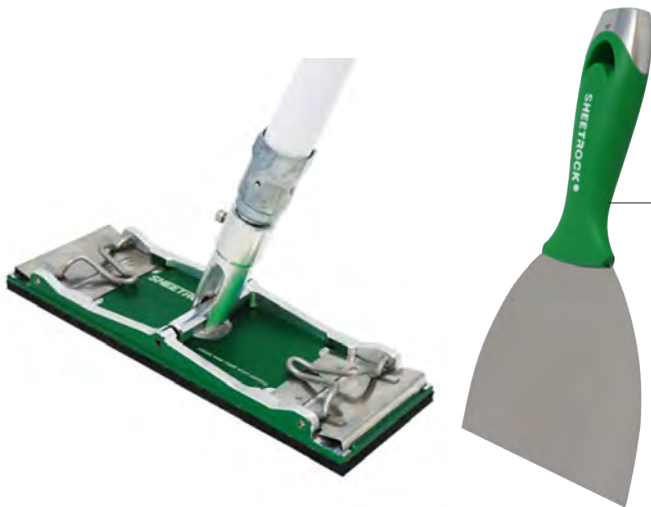




# HOT NEW PRODUCTS



From innovative tools and accessories to the latest construction products and building materials, there is always something new at Slegg Building Materials. Here are just a few hot new professional-grade products available from the brands you know and trust. These products will be available for you to see at the Slegg Pro show:



## USG Sheetrock Tools

Sheetrock brand tools from USG have been engineered to meet the specific needs of drywall professionals. Sheetrock's line of hand tools, hanging and finishing accessories make installing, taping, texturing and repair work comfortable and efficient. See the new No-Flip Pole Sander at the Slegg Pro Show.

[www.sheetrocktools.com](http://www.sheetrocktools.com)

## DeWalt Green Line Laser

The new 3x360 Green Line Laser from DeWalt runs off the 12V MAX lithium-ion rechargeable power tool battery platform. Utilizing Green Beam laser technology, this innovative measurement tool features a full-time pulse mode that maintains full brightness for visibility and extends beam range. The over-moulded housing and IP65 are debris and water resistant, and the locking pendulum helps prevent damage to internal components. [www.dewalt.com](http://www.dewalt.com)







## DeWalt Cordless Concrete Nailer

DeWalt's new 20V MAX Cordless Concrete Nailer is designed specifically for use in concrete and steel applications in commercial framing and tracking, mechanical and electrical installations and insulation surface prep. This gas-free, fully-electric nailer eliminates the need for fuel cells and operates on the user's existing battery platform. The tool's flywheel-based design delivers a fast application speed comparable to gas concrete nailers. Professionals will appreciate this tool's consistent performance and low noise and recoil levels. [www.dewalt.com](http://www.dewalt.com)

## DeWalt Carbon Fibre Hammer Tacker

DeWalt's new Carbon Fibre Composite Hammer Tacker weighs 45% less than comparable tools on the market, making it easier to use, hold and carry than traditional die-cast aluminum hammer tackers. This tool's lightweight carbon fibre construction reduces vibration by 45% and muscle fatigue by 25%, allowing you to maintain maximum productivity, especially in applications that require swinging overhead or multiple repetitions. The DeWalt Hammer Tacker drives 5/16-inch, 3/8-inch and 1/2-inch heavy duty staples. [www.dewalt.com](http://www.dewalt.com)



## DeWalt Random Orbit Sander

DeWalt recently added three new cordless products to its line-up of 20V MAX XR pro-grade woodworking tools. These include a Brushless 5-inch Random Orbit Sander, a Brushless Jigsaw and a Brushless Router, all designed for use by professional cabinet makers and installers, trim carpenters, builders, painters, furniture makers and general contractors. Each tool is light and compact, allowing for more controlled cuts and sanding, and multiple rubberized pads improve grip and reduce vibration stress. The durable brushless motor does not require brush changes. [www.dewalt.com](http://www.dewalt.com)

## Ames Tile & Stone Vytec Versa Luxury Vinyl Flooring

Vytec Versa Luxury Vinyl Flooring is available in a variety of natural wood, stone and ceramic tile finishes. The extensive colour palette and versatile looks are designed to bring both style and function to any interior design, and it offers a certified, superior acoustic performance rating. The durable wear layer makes it pet-friendly and a reinforced polyurethane coating provides extra scuff, scratch and stain resistance. Plus, the patented 5G-Click system makes it user-friendly for installers. [www.amestile.com](http://www.amestile.com)





## HOT NEW PRODUCTS

### Milwaukee Backpack Sprayer

Designed to meet the needs of professional landscape maintenance, Milwaukee's new M18 Switch Tank Backpack Sprayer features an interchangeable tank design with no pumping required. Powered by a M18 REDLITHIUM XC3.0 battery pack, this sprayer delivers five pressure settings from 20- to 120 PSI with a 25-foot spray radius. The isolated pump, hose and wand design allows different tank assemblies for different spraying applications without chemical cross-contamination.

[www.milwaukeetool.com](http://www.milwaukeetool.com)



### Milwaukee Chain Saw

The new M18 FUEL 16-inch cordless chainsaw has the power to cut hardwoods faster than gas saws and delivers up to 150 cuts per charge. Designed with professional landscape maintenance and power utilities in mind, the M18 FUEL chainsaw can reach full throttle in under one second, providing improved control and productivity. The

POWERSTATE brushless motor maintains speed under heavy load without bogging and REDLINK PLUS technology ensures protection from overload, overheating and over discharge. [www.milwaukeetool.com](http://www.milwaukeetool.com)



### Milwaukee Circular Saw

Designed for the professional carpenter and general contractor, the M18 FUEL 7 1/4-inch circular saw from Milwaukee generates 15A corded power, cuts faster than a 15A corded saw and gives users up to 750 cuts per charge. The brushless motor provides 5,800 rpm and higher speeds under load, and an electric brake stops the blade quickly after cuts are complete for enhanced safety. Power comes from the M18 REDLITHIUM high output HD12.0 battery.

[www.milwaukeetool.com](http://www.milwaukeetool.com)



### Max Metal Connector Nailer

Tool manufacturer Max USA Corp recently launched its new "Superlocator" metal connector nailer. This tool is designed for heavy duty use by professional framers and installers. An exposed nail tip allows for easy placement that avoids tool slippage while firing. This tool also features a maintenance-free end cap filter, an easy-twist adjustable deflector and an anti-dry fire mechanism. The heavy duty rafter hook allows for easy storage while working.

[www.maxusacorp.com](http://www.maxusacorp.com)





### Reflexor drywall acoustic membrane

RefleXor is an all-in-one, thermo-acoustic membrane that combines a high-performance vapour barrier with effective soundproofing properties and thermal resistance. The membrane is also a powerful barrier against odour transmission and mould. Composed of acoustic felt and a reflective metalized film, it provides a continuous sound barrier that effectively seals each room. RefleXor is an excellent solution for any interior wall structure, division or ceiling.

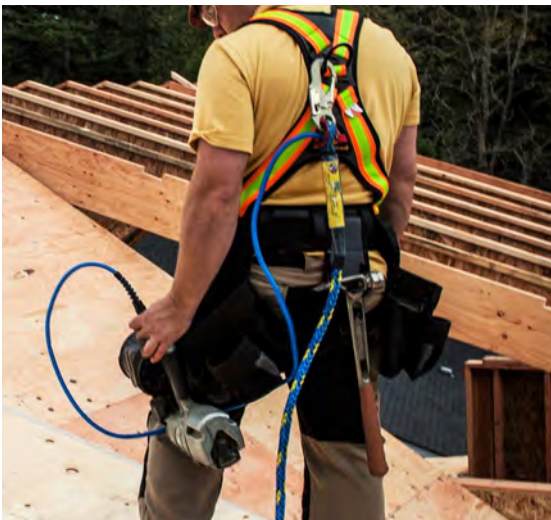
[www.mslfibre.com](http://www.mslfibre.com)



### Renegade Sander

The Renegade Drywall Sander 2.0 is the first of its kind with a 360° LED illuminated head for maximum clarity on the jobsite. This innovative take on the traditional drywall sander features 600-1500 RPM speed control, quick-change access for brush replacement and hook-and-loop sanding disc compatibility.

[www.renegade-tools.com](http://www.renegade-tools.com)



### Primeline Tools X-line 50' pneumatic lifeline

The X-Line combines a fall protection lifeline and an air-hose in one product. This innovative design helps roofers work safer and faster by instantly cutting rooftop tripping hazards in half.

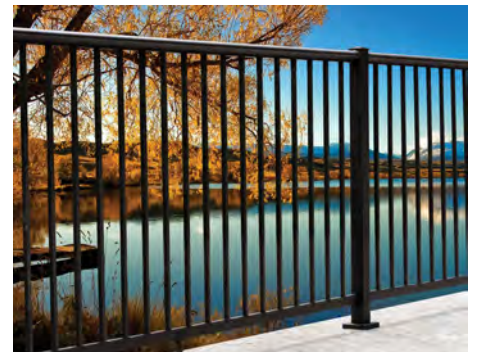
[www.primelinetools.com](http://www.primelinetools.com)



### Regal Ideas Crystal Rail/Urban rail

The Crystal Rail railing system from Regal Ideas utilizes high-impact glass to put a new twist on deck safety. The 10mm, low-iron, tempered glass gives a crystal-clear view without the obstruction of posts and rails while providing a strong barrier against falls.

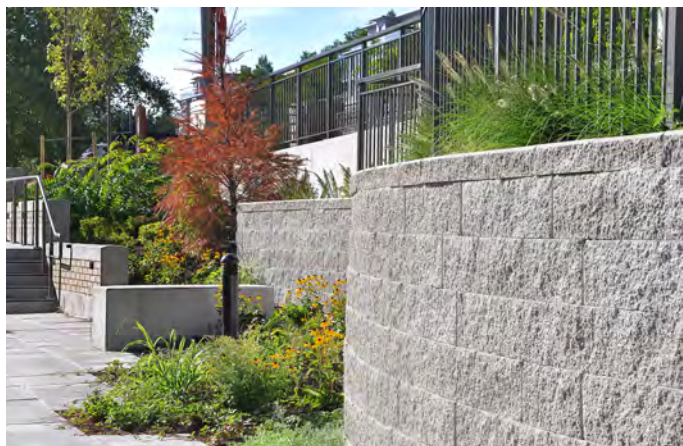
Regal Idea's Urban Rail is a pre-assembled panel system that makes installation quick and easy. The aluminum panels are available in 8ft sections, and the aluminum posts include welded brackets for quick attachment. [www.regalideas.com](http://www.regalideas.com)





### Basalite Woodgrain Paver

Basalite has been a leading supplier of concrete masonry, segmented walls, paving stones, packaged concrete and other outdoor living products for almost four decades. The company recently launches a line of Woodgrain pavers that match the look and beauty of natural wood with the durability of concrete. Available in three natural wood colours, these pavers are textured to mimic real wood while remaining impervious to rot, warping, splintering, fading and insect infestation. [www.basalite.ca](http://www.basalite.ca)

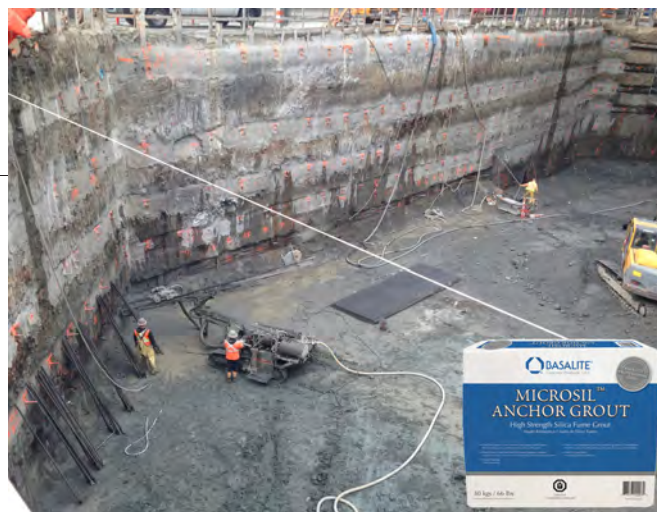


### Basalite Valley Stone Retaining Stones

Retaining walls often present a challenge for landscape contractors depending on the terrain, but Basalite's Valley Stone product is suitable for any kind of structural soil reinforced retaining wall application, from the simple to the complex. Available in three face styles and earth tone colours, Valley Stone provides an attractive finish while meeting all critical structural requirements. [www.basalite.ca](http://www.basalite.ca)

### Basalite Microsil Anchor Grout

Microsil Anchor Grout is an un-sanded, pre-blended cement-based grout that is designed to improve jobsite efficiencies with its high early strength gain. Faster strength gain allows contractors to accelerate the drilling and grouting process to maximize construction schedules. It is suitable for multiple applications such as cable-bolting, soil-nailing, dam rehabilitation, retaining wall construction, soil stabilization, post-tensioning, micro-pile injection and bridge foundation. [www.basalite.ca](http://www.basalite.ca)



### Expocrete Zen wall

For homeowners looking for a contemporary, minimalist look for their landscape reno, ZenWall from Expocrete may be the perfect option. ZenWall features a monochromatic colour palette, a two-sided finish and a clean, linear design that produces straight or curved walls without complicated patterns. The built-in interlocking channel makes for easy, secure installation. Available in grey or charcoal. [www.expocrete.com](http://www.expocrete.com)





## Masonite Livingston Doors

Masonite, a long-time leader in the interior door segment, recently introduced the Livingston model to its line-up. The Livingston features strong lines and a contemporary look that is versatile enough to work well with almost any design aesthetic. Available in passage and bi-fold styles, the Livingston features "Safe N' Sound" solid-core construction that provides durability and improved sound resistance. Masonite also offers 20-minute fire-rating doors for select heights and designs. [www.masonite.com](http://www.masonite.com)

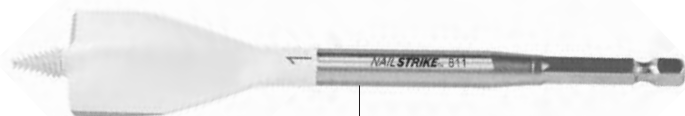
## Bosch GBH18V-20 3/4" Cordless Rotary Hammer

The Bosch 3/4" Cordless Rotary Hammer delivers big power in a lightweight, easy-to-handle 7-lbs. package. The efficient DC motor is easy to maintain and delivers 4,550 bpm and 1.3 ft.lbs. of torque with a no-load drilling speed of 1,800 rpm. The three-mode control allows for separate drilling, hammer drilling and chiseling applications. [www.boschtools.com](http://www.boschtools.com)



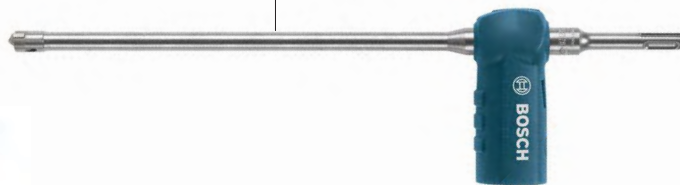
## Bosch Speed Clean Bit

The lightweight Speed Clean Bit from Bosch features an internal dust channel that is milled to generate less dust with 25 percent greater speed in concrete drilling applications. The bit's dust extraction system saves time and money and helps mitigate potentially harmful concrete dust better than traditional drilling methods. [www.boschtools.com](http://www.boschtools.com)



## Bosch Nail Strike Bit

The Nail Strike Spade Bit from Bosch is the first wood-boring bit specifically designed to strike nails and cut through them. The bit features enhanced cutting edges, a fully-threaded cone tip and a more robust paddle design optimized for fast cordless drilling to run conduit or pipe. Capable of cutting through as many as 30 nails before it needs replacing. [www.boschtools.com](http://www.boschtools.com)



## Simpson Strong Tie Quik Drive

The Quik Drive subfloor tool is an autofeed screwdriving system for securely fastening subfloor panels to floor joists. This third-generation subfloor tool has been engineered to be lighter and more ergonomic than earlier versions with additional improvements to the collated-screw feed mechanism. [www.strongtie.com](http://www.strongtie.com)



## HOT NEW PRODUCTS

### Hilti Combihammer

The new cordless SDS Max combihammer minimizes fatigue and maximizes productivity in heavy-duty drilling and chiseling applications. The tool's Active Torque Control (ATC) is designed to stop the body from spinning out of control and causing injury, while Active Vibration Reduction (AVR) reduces vibrations caused by drilling and chiseling in concrete and masonry. The 36V brushless motor offers high performance and efficiency, and the optional DRS-Y dust removal system collects up to 95% of dust. [www.hilti.ca](http://www.hilti.ca)



### Hilti Cordless Worm drive Circular Saw

Hilti's new cordless worm drive circular saw provides cutting performance comparable to a corded worm drive saw in a lightweight package. This saw is compatible with Hilti 36V lithium-ion batteries and provides enough battery run time to last a typical work day. With a blade diameter of 7.4 inches and a maximum cutting depth of 2.4 inches, this saw permits deeper cuts in production wood, HDO, MDO, plywood, hardwoods and pressure treated lumber. [www.hilti.ca](http://www.hilti.ca)



### Hilti Direct Fastening Tool

Speed is the key to productivity in light fastening applications, and Hilti's new lightweight cordless nailer is designed to provide easy, reliable fastening on various surfaces. With a total body weight of just 3478 grams, this nailer can drive up to 800 fasteners with a single battery charge (depending on fastener type and battery model). The 30-nail magazine provides a fastening rate of 1.3 nails per second in various fastening applications in concrete, solid masonry or steel and light electrical installations. [www.hilti.ca](http://www.hilti.ca)



### Makita Cordless Rebar Tying Tool

Makita has delivered a cordless tying solution for rebar and steel rod with the 18V LXT Lithium-Ion Brushless Cordless Rebar Tying Tool. The brushless DC motor has a high power to weight and size ratio and runs cooler for longer life. Tie multiple bars in under one second and up to two #5 diameter bars or four #4 diameter bars at once using single and continuous actuation. [www.makita.ca](http://www.makita.ca)



## HOT NEW PRODUCTS

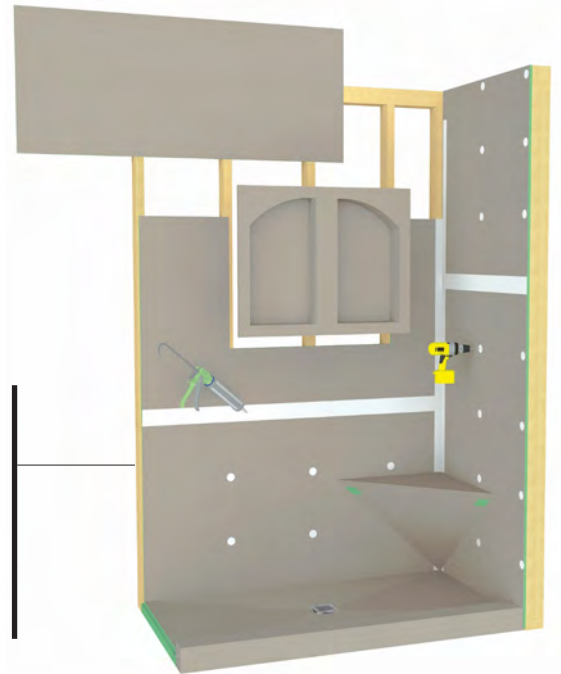
### Hourwall urbanCONCRETE

Hourwall urbanCONCRETE faux concrete panels are designed to deliver the look, feel and style of authentic concrete without the cost and difficulty associated with traditional concrete wall installation. Each urbanCONCRETE panel is formed from a real concrete mould and is then hand-painted to look like a poured concrete wall. Available in 24x48-inch and 48x48-inch sizes, urbanCONCRETE panels are fastened to the wall using standard screws or nails and no reinforcement is required. Top and side shiplap edges make installation simple. [www.hourwall.com](http://www.hourwall.com)



### Builder's Choice Shower Doors

Victoria-based Builder's Choice recently added the SERENITY model to its line of custom manufactured glass shower enclosures. This easy install slider system comes complete with clean stainless steel hardware, durable 10-millimetre thick tempered safety glass in a contemporary look that compliments any interior design. The design of this frameless enclosure system minimizes the amount of hardware required, and no gaskets or seals makes it easy to maintain. [www.bcshowerdoor.com](http://www.bcshowerdoor.com)



### Hydro-Blok Shower System

The Hydro-Blok Shower System speeds up the time it takes to install custom stone or tile shower enclosures. Hydro-Blok is a highly flexible system that utilizes 100-percent waterproof HCFC-free XPS closed-cell foam to create a strong and lightweight enclosure that is ready to water test and start tiling within hours of completion. The Hydro-Blok Shower System comes with either a standard or single-slope, barrier-free shower pan, and a hidden, linear drain is available. [www.hydroblok.com](http://www.hydroblok.com)



### Pyramex Ridgeline Hydro Dipped Hard Hats

Constructed from sturdy ABS material, these hard hats feature a ratchet suspension system that allows the fit to be adjusted while wearing the hat. The four-point ratchet suspension may be converted to six-point using an optional strap, and replacement ratchet suspensions are available. The padded fabric sweat band is also fully replaceable and the full-brim design provides increased protection. [www.pyramexsafety.com](http://www.pyramexsafety.com)