

ISLAND BUILDER

An Information Source for
Slegg Professional Customers

2020

SPECIAL 8-PAGE PULL-OUT FEATURE

Green Your Build

Check Out the Latest
Eco-Friendly Products

ALSO INSIDE:

ON THE LEVEL

Precision products
for perfect floors

THAT'S A WRAP

Exterior insulation
cracks the Code



LIGHT IN WEIGHT, HEAVY IN PERFORMANCE



**BEST IN CLASS 5/8" CGC SHEETROCK®
ULTRALIGHT PANELS FIRECODE® X*
MAKES INSTALLING DRYWALL
EASIER AND FASTER THAN EVER!**

As a contractor, labour represents one of the greatest costs of any project. Any materials that result in productivity gains translate into labour cost savings which benefits your enterprise giving you an edge over competitors in your market. Achieving these savings just got easier with the introduction of CGC Sheetrock® UltraLight Panels Firecode® X, the lightest 5/8" Type X gypsum panel in Canada.

For more information, visit cgcinc.com





CONTENTS

An Information Source for Slegg Professional Customers | 2020

5
**LOTS MORE
IN STORE**
Message from
Tim Urquhart

9
**GROWING
TOGETHER**
Message from
Travis Hendren

14
**INTERIOR
DESIGN**
Slegg is your one-stop
shop for interior finishing
products as well

**CENTRE-SPREAD
FOLD-OUT**



A Slegg product
showcase of the
latest eco-friendly
construction items

38
**MORE ON
THE FLOOR**
New products
and methods for
floor installation

46
**HARDSCAPE
ARCHITECTS**
Non-organic, low-maintenance
ways to beautify your
outdoor spaces

59
LAYERING UP
Outsulation
products will play
a key role in the
drive to Net-Zero

68
**MUTUAL SUPPORT
NETWORK**
A mutually beneficial
partnership with the Island
contractor community



81
**LENDING
A HAND**
Local community
events and charities

87
**FAMILIAR
FACES**
Slegg
employees you
know and trust



98
**IN THE
CONNECTIONS
BUSINESS**
Message from
Steve Conroy

**PART OF YOUR
COMMUNITY
SINCE 1947**

COMOX
554 Anderton Rd.
Comox, BC
(250) 339-2207

LANGFORD
2901 Sooke Rd.
Langford, BC
(250) 478-5509

SIDNEY
2030 Malaview Ave W.
Sidney, BC
(250) 656-1125

CUMBERLAND
3217 Small Rd.
Cumberland, BC
(250) 336-8710

NANAIMO
4950 Jordan Ave.
Nanaimo, BC
(250) 758-8329

SLEGG DOOR SHOP
2901A Sooke Rd.
Langford, BC
(250) 386-3667

DUNCAN
7281 Trans-Canada Hwy
Duncan, BC
(250) 748-1032

SAANICHTON
2046 Keating Cross Rd.
Saanichton, BC
(250) 652-1130

TOFINO
661 Industrial Way
Tofino, BC
(250) 725-2538

VICTORIA
1496 Admirals Rd.
Victoria, BC
(250) 388-5443

AN UNCOMPROMISING COMMITMENT TO SAFETY

From our yards to your jobsite



The success of our businesses depends on the safety and well-being of our employees, customers, vendors and the general public. In order to accomplish this goal, we have a shared responsibility to eliminate unsafe conditions and are confident that together we can minimize the potential exposure and spread of the Coronavirus (COVID-19). Along those lines, we think it is important to let you know the policies and best practices we have instituted to serve one another during this time of concern.

OUR FACILITIES

Keeping People Safe

- We provide our employees with PPE such as face coverings, gloves, and eyewear
- We train our employees on health and safety standards pertaining to COVID-19
- We require sick employees to stay home
- We screen the health of our employees and send them home if sick
- We have hand sanitizer available for all employees

Securing a Healthy Environment

- We deep clean and disinfect high-touch surfaces and equipment on a regular and on-going basis
- We open windows, doors or adjust heating/cooling to maximize ventilation
- We practice social distancing with our employees and customers in our locations
- We have eliminated all third-party yard visits except for customer pickup
- We provide contactless order fulfillment at our yards

Creating a Flexible Workplace

- We promote flexible work schedules to avoid overcrowding at our facilities
- We have altered employee start and lunch times to eliminate groups in breakrooms and common areas at large facilities
- We are utilizing video conferencing, phone, text, and email in place of face-to-face interaction
- We have eliminated all non-essential travel



YOUR JOBSITE

Our Commitment

- We will follow Social Distancing and limit number of employees on buck hoists and freight elevators
- We will follow PPE requirements
- We will comply with jobsite health screenings
- We will equip employees with hand sanitizer
- We will facilitate staggered work schedules with other trades
- We will refrain from hand shaking, fist-bumping and other physical touching
- We will leave jobsite if anyone becomes ill

Contact us for more information.

LOTS MORE **IN STORE**



Tim Urquhart
PRESIDENT

Slegg Building Materials

☎ 250.478.5509

✉ T.Urquhart@slegg.com

“A mission we have at Slegg is to bring our customers the best products from the best suppliers in the construction industry.”

Welcome to the 4th edition of our magazine, and the 1st one of this new decade.

A mission we have at Slegg is to bring our customers the best products from the best suppliers in the construction industry. There continues to be many improvements in construction applications and processes, and the products we sell tie into many of these positive changes.

In this edition you will read about leading-edge suppliers providing consistently superior quality products available through all of our branches, up and down, and across Vancouver Island.

We have lots going on in the coming year that we believe will be beneficial to you and your businesses. We continue to invest capital in our operations; soon you will see new forklifts, boom and delivery trucks, more of our ‘unique’ covered lumber racks and increased display and signage for easier product identification.

Additionally, we have plans to broaden our offering in the block, pavers, bulk products category in four of our branches. We will also be expanding our construction fasteners section to become a true ‘one-stop-shop’ for anything you need to fasten. Get ready for a lot more cordless power tools — the hunger for the cordless platform makes

so much sense; these new tools are powerful and super-convenient.

We are going to be looking “up” with a larger presence in the ceilings category. There are so many options available through the manufacturers we work with, we can ensure we have what you need no matter how complex the specification. Exterior insulation solutions have been kept in the back warehouse long enough; we plan on bringing out more options for below grade, side walls, vertical, horizontal, roof-top, concrete block, residential or commercial.

Staying with the outside theme, siding choices continue to grow and the manufacturers we are featuring have everything you need to WOW your customers or your neighbours!

In closing, thanks for reading this edition and, most importantly, thank you for your continued support of our company and our Slegg Team. 🇸🇨

Tim U.



WESTERN
CANADA'S
-New Choice For-
WINDOWS

Why you should choose Milgard Windows & Doors

- **Style:** Choose a window that is a reflection of you.
- **Quality & Innovation:** Our windows and doors stand up while standing out.
- **Energy Efficiency:** With Milgard, the future looks bright.
- **Security:** Peace of mind for you and your family.
- **Community:** Because our home is near yours.
- **Full Lifetime Warranty:** We're with you every step of the way.
- **Complete Product Lines:** Vinyl, Wood, Fiberglass and Aluminum.



Milgard® Patio Doors

Create an impressive entrance to your home with beautiful, high-quality patio doors from Milgard in your choice of styles and frames.

All our patio door products feature a wide range of colors, glass and hardware options so you can customize them to suit your taste and your home's architectural style.



800.MILGARD
milgard.ca



DEWALT®

ENGINEERED BY **Powers™**

THE TOTAL SOLUTION



**ANCHORS
FASTENERS**



**CONCRETE
BITS**



HAMMERS



EXTRACTION



**REMOVAL
DIAMONDS**



SETTING



IF YOU HAVE OUR BITS WE HAVE YOUR BACK.

DEWALT

**IRON BLAST
TECHNOLOGY**

**NO BREAK
GUARANTEE**

IF YOUR DRILL BIT FAILS FOR ANY REASON WHILE THE ANCHOR WEAR MARK IS STILL VISIBLE ON THE PRODUCT, DEWALT WILL REPLACE IT FREE OF CHARGE.

S SLEGG
BUILDING MATERIALS

**SEE YOUR SLEGG PROFESSIONAL FOR MORE
DETAILS AND START SAVING YOUR BOTTOM LINE**

GROWING TOGETHER



Travis Hendren

PRESIDENT

WSB Titan

📞 905.669.1898

✉️ travis.hendren@wsbtitan.com

“One of the biggest benefits for Slegg is still to come. Later this year we plan to launch an exclusive business-to-business e-commerce website for Slegg’s professional customers.”

The last few years have been busy for Slegg Building Materials. Not only has Vancouver Island’s oldest and largest building supply dealer been at the forefront of the Island’s construction boom but the company has also experienced big changes at the corporate level. I’m happy to say Slegg’s contractor customers have already begun to feel the positive effects of these changes and there are a lot more to come.

In 2015, Slegg was purchased by WSB Titan, Canada’s largest specialty distributor of gypsum and gypsum supplies. Then, in 2018, WSB Titan was itself purchased by GMS, the leading North American distributor of interior finishing products. Combined, WSB Titan and GMS are the single-largest purchaser of many building product categories in North America. The combined companies distribute more than 20,000 individual products, through a growing network of more than 260 building supply dealerships across 44 states and five provinces. Slegg and its customers benefit from the many advantages that come from being an integral part of this large, industry-leading network.


One of those advantages is a human one. The combination of WSB Titan and GMS brought together two of the most experienced management teams in the building supply industry. From the corporate offices to the individual locations, our management team members possess a detailed understanding of the construction market, extensive product knowledge and long-standing relationships with both customers and vendors. These individuals share best practices to maximize operational efficiencies and improve the customer experience across our full dealer network. For Slegg customers, this translates into improved service, more efficient and consistent supply and delivery, as well as access to a wider range of products and materials than ever before.

Being part of GMS also gives Slegg access to the resources needed to

make service improvements for our customers. Over the course of the last few years, Slegg customers have benefited from investments in new equipment, improved racking and bins for lumber and building supplies that keep materials in good condition and make it easier to pick orders. Slegg has also made improvements to lumber and hardscape areas, to make it easier to access and load materials, and added improved in-store signage to help customers find what they need quickly.

One of the biggest benefits for Slegg is still to come. Later this year, we plan to launch an exclusive business-to-business e-commerce website for Slegg’s professional customers. Through this site, contractors and builders will be able to order materials from Slegg instantly from a computer or digital device, as well as monitor orders in progress and check order history. We feel this investment in technology gives professional customers yet another competitive advantage and positions Slegg to meet the changing needs of the marketplace for years to come.

After over five years working for GMS as Vice President of Corporate Development, I came to Canada in June of last year, to oversee our operations, as President of WSB Titan. I have since had the opportunity to personally visit dozens of our dealerships across Canada, including our Slegg locations on Vancouver Island. I can say with confidence that they all share the same steadfast commitment to customer service and adhere to a business model that focuses on building loyalty and long-term relationships with top-tier customers and suppliers.

I am excited about the opportunities that lie ahead for WSB Titan and Slegg Building Materials and I am thrilled to continue our focus on constant improvement for the benefit of our thousands of customers across Canada. Thank you for your business and I look forward to growing together. 



SPECIALIZING IN
Western Red Cedar and more...
since 1977



- Trim
- Moulding
- Porch
- Decking
- Railing
- Pavers



- Decking
- Railing
- Lighting
- Fastening



- Stocking over 650 items of the best quality Western Red Cedar

A Modern Twist on Classic Design



DaVinci

Available in
D4.5 D4.5D
and in DaVinci Board & Batten*
Matching Accessories also available.

Not available in all regions

Designers and trend setters have pointed us to these rich, full-bodied colours which exude warmth as well as cool tranquility. Create striking combinations by adding neutrals or complementary accents.

- .046" Thickness
- Exclusive Helios™ Technology
- 25-year fade resistance warranty
- Limited Lifetime Warranty

ALUMINUM
urbanix™
collection

Available in
Solid Panel & Soffit.
Match Accessories also available.

The sleek look is perfectly suited for modern contemporary designs. Urbanix' clean lines will push style to the edge. Incorporate it with other materials and finishes to create contrast and add curb appeal.

- Premium gauge aluminum
- Will not rust or rot
- Manufactured with high tensile strength aluminum
- 40 year limited warranty

12 Rich Classic Colours!



9 Solid Contemporary Colours!



4 Two Tone Wood Tones



* PREMIUM COLOURS

Colours shown are digitally reproduced.
We recommend you make final colour
decisions using actual product samples.

KAYCAN

www.kaycan.com



MicroPro Sienna Treated Wood



Treated Wood



A positive choice for an eco-lifestyle

MicroPro Sienna Treated Wood is processed using patented MicroPro micronized copper preservative. This technology reduces the environmental footprint of Sienna to less than half that of traditional residential treated wood.

- Fungal decay and termite protection
- More natural wood appearance
- Use above ground, ground contact and in fresh water
- Certified low VOC
- Certified Environmentally Preferable Product
- NGBS Green Certified
- Better corrosion resistance
- Aluminum contact above ground
- Cut-N-Seal® colour-matched end sealer available
- Backed by Lifetime Residential Limited Warranty

Learn more

microprosienna.com



CanWel®

We Can Help with Your Next Project



MiTek®



VERSATEX
TRIM BOARD



ENGINEERED WOOD | TREATED WOOD | SIDING & TRIM | DECKING & RAILING
INSULATION & WRAP | ROOFING | INTERIOR FINISHING

PINNACLE
Allura Fiber Cement Siding



**YOU DESERVE THE
NATURAL BEAUTY OF WOOD
WITH THE SAFETY AND
DURABILITY OF CEMENT.**

taiga siding

Whatever it takes.

Fire and pest-resistant features give you the confidence that your home will stay safe for a long time. With its rigorous testing and dependable warranties, our Allura siding product was designed to be maintenance-free for even longer. Pinnacle Fiber Cement siding is available in a variety of colours and styles so you can appreciate the beauty of your home for as long as you're in it.

taigabuilding.com



AMES TILE



INTERIOR DESIGN

You may not know it, but your first stop for building materials can be your one-stop shop for interior finishing products as well

After more than seven decades in the business, it is no surprise that the Slegg Building Materials brand has become synonymous with building materials on Vancouver Island. Whether it's lumber, drywall, insulation or anything else a contractor needs to build a structure, chances are Slegg is their go-to source to find what they need to get the job done from start to finish.

In fact, when it comes to the finishing part of the job, Slegg's business has grown massively in recent years. This increase is a direct result of the company's efforts to focus more attention on interior design by identifying consumer trends and bringing in the kinds of products and finishes contractor clients are looking for. If a client needs help deciding what finishes to choose, Slegg has employees with interior design expertise who can help.

Slegg carries a wide range of interior finishing products and materials from the best manufacturers in the business, and that selection is growing all the time. We've highlighted just a few here to give you a taste of what else your go-to building materials supplier has on offer.



VISTAGRANDE[®] EXTERIOR DOORS



Side Door

Bedroom

Entryway

Patio

Brighten Your Home from Front to Back

VistaGrande doors create a better living environment by bringing more natural light into any home.



Choose the exterior doors designed to brighten your home for years to come.



PPG PAINTS

In the paint products segment, few manufacturers can match PPG's 135-year reputation for product quality and development. Slegg carries a full line of PPG interior paints, stains, sealants and supplies.

One of the most important decisions that any homeowner or builder will make on any new construction or renovation project is what colour, or colours, to paint the interior walls. Although people may not always be conscious of it, interior colour can have a major impact on the comfort and satisfaction they take from their living and working spaces. For that reason, PPG puts a lot of time and effort into choosing its colour palette.

"We have a big team that is dedicated to colour development," says Sylvie Dubreuil, Business Development Representative for PPG Industries in British Columbia. "It's their job to study trends in areas like fashion and home furnishings to find out what kinds of colours and shades people are looking for, and it's always changing.

colours, like rich dark browns and blues."

PPG has identified its 2020 colour of the year to be Chinese Porcelain, a very bold, traditional colour that is a combination of cobalt and ink blue.

Dubreuil says British Columbia is a huge market for PPG's line of wood stains, varnishes and sealants: "People love the look of natural wood on the West Coast, both inside and outside, especially cedar, so we sell lots of transparent stain so that natural beauty can show through."

EURO-RITE CABINETS

Cabinets are obviously the star of the show for any kitchen renovation, and Pitt Meadows-based Euro-Rite Cabinets have been a leading supplier to British Columbia contractors and builders since 1982. Slegg Building Materials carries both cash-and-carry and special-order cabinet lines from Euro-Rite.

"Our AdvantageOne line is a ready-to-assemble cabinet product that can be purchased in-store and installed the same day," says Glen Dobson, Business Development Manager. "Our AdvantagePlus line is pre-assembled

"For example, for a long time people were really interested in textured paint finishes, but we don't see that now. Instead, for the last few years people have been moving toward simple finishes with more soothing, relaxing



and delivered to the jobsite ready to install; but because AdvantagePlus is a special-order product, it can take up to five weeks for delivery.”

Euro-Rite’s AdvantageOne line features a standard cabinet box with ends finished to match the doors; there are eight different door styles available in the AdvantageOne line in a variety of finishes. The AdvantagePlus line offers 48 door styles and features dovetailed drawer boxes. Cabinets in the AdvantagePlus line range across eight price categories depending on the materials chosen and the production time required.

“The door finishes range from a high-end painted shaker right down to something as simple as white

thermofoil,” Dobson explains. “Cabinet finishes have come quite a long way, especially in terms of using graphics to create a realistic wood look on composite material. We can produce textured melamine cabinets with raised knots and wood grain that is basically indistinguishable from real wood.

The look is the same but the composite materials are actually better than wood because they don’t warp, fade or degrade due to moisture and heat.”

WOODTONE SHIPLAP

Founded in 1989, Chilliwack-based Woodtone is a major supplier of wood products for Slegg Building Materials. Woodtone’s wide range of products includes lap, shake and panel exterior

siding; Western red cedar posts, trim and fascia; and spruce, pine and fir (SPF) trim, corners and posts. In addition to its wood products business, the company also operates a custom lumber pre-finishing service under the ColorGuard brand.

“We deliver all our wood products pre-primed, then the contractor can finish it with any colour they want,” explains Cody Kwak, Territory Manager. “The pre-finishing is a huge part of our business as well, lumberyards send us their siding and we finish it whatever way the customer wants, whether its cedar or fibre cement. The contractor or client can spec and order through Slegg and it usually takes two to three weeks.”



SAME DAY KITCHENS!

IN STOCK exclusively at Slegg Building Materials, **ADVANTAGEONE** Solaire white kitchen cabinets and vanities. Complete kitchen and bathroom solutions ready to take home **TODAY!**

Check out a complete list of our doorstyles online at www.eurorite.com or consult with one of the knowledgeable design staff at Slegg Building Materials.

FEATURES AND BENEFITS:

- Soft-Close doors and drawers
- Everything is packaged in one box
- All gable ends are colour matched to the doors
- Simple assembly
- Made in Canada
- Extensive Warranty
- Free design service

www.eurorite.com

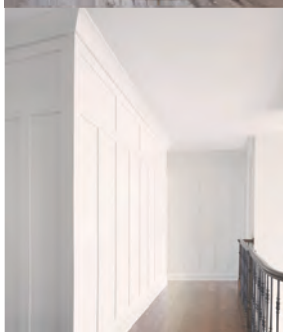
ADVANTAGEONE
READY TO ASSEMBLE
Kitchens, Bathrooms, Closets

WOODTONE



On the interior side, Woodtone's offerings include pre-finished and pre-primed wall and ceiling paneling in three profiles. The Fineline series of paneling has a modern look with a straight, penny gap and is available in seven solid and semi-transparent colours. The standard shiplap is a finger-jointed, tongue-and-groove pine that comes factory-coated in white primer. Finally, the classic V-joint, tongue-and-groove paneling is available in six solid and semi-transparent colours.

"A popular trend now is people like the wood look, whether it's natural or painted," says Kwak. "The modern farmhouse look is also hot right now, and they can get that with the standard white shiplap."



Choose Alexandria...

Enhance your home, add character, texture and interest to every room with our vast selection of top quality boards.

Perfect for sculpting your walls and creating a unique look, our boards can be combined with mouldings to create a truly impactful look.

Choose from multiple species and many dimensions to suit your needs.

ALEXANDRIA
Moulding

www.alexandriamoulding.com



ROCK SOLID SUPPLY



ROCK SOLID SUPPLY – BATHROOM VANITIES AND ACCESSORIES

Barrie, Ontario-based Rock Solid Supply has created a successful niche in the bathroom vanity business by giving customers more control over their bathroom renovations. Using Rock Solid's semi-custom Mix-and-Match program, which is available through Slegg Building Materials, renovation customers can choose from among multiple products and finishes.

"The customer starts by choosing a vanity base, door styles and finish, then they can match that with a stone countertop, sink and hardware from our collection; we will create that vanity based on their specifications," says Russ Blanco, Business Development Manager. "After that they can add a matching linen tower and medicine cabinet and a mirror if they want. Our team works directly through Slegg sales reps in individual stores. They can help contractors and homeowners through the process."

Available finishes include wire-brushed oak, stained wood and painted wood, all in a selection of colours. Customers can choose from 12 different door styles designed to match classic, rustic and contemporary interior motifs. All Rock Solid vanities feature dovetail drawers

with hardwood face and back and either quartz or granite countertops.

Price points for various vanity configurations vary according to size and the particular finishes chosen. Sizes range from a 24-inch, single-bowl model up to a 72-inch, double bowl, and vanities can be customized to fit non-standard spaces. "We can deliver a unit at roughly half the cost and in half the time that it takes for a fully custom vanity."

HARBINGER FLOORING

Choosing building materials is not as simple as it once was. Materials have always needed to do what they were designed to do, be durable and, for finish materials, look good. Today, there is additional pressure for materials to be both sustainable and healthy, and Harbinger Flooring knows its modular vinyl floor tiles and planks deliver on all these counts.

Based in Richmond, Harbinger has been supplying flooring products to homeowners and the building industry for around 15 years. The company offers several lines of glue-down tiles and planks and click-together floating floors in tiles and planks. Unlike many traditional vinyl and laminate flooring

HARBINGER FLOORING





BUILDER'S CHOICE

SHOWER DOOR INNOVATIVE GLASS

HARMONY

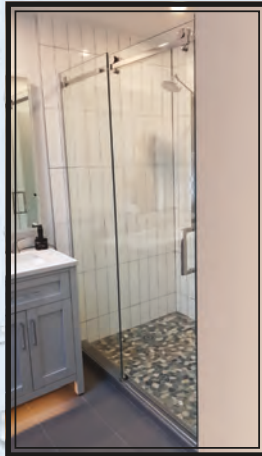
Shower Door



- ✓ Elegant one panel slider
- ✓ Luxurious 10mm tempered safety glass
- ✓ Clean chrome finish ✓ 8" square handle

SERENITY

Shower Door



- ✓ Contemporary style one panel slider
- ✓ Luxurious 10mm tempered safety glass
- ✓ Clean chrome finish
- ✓ 8" square handle

BYPASS

Tub Door



- ✓ Modern style two panel slider
- ✓ Clean chrome finish
- ✓ Luxurious 10mm tempered safety glass
- ✓ Convenient through glass towel bars

PIVOT

Shower Door



- ✓ Frameless 6mm tempered safety glass
- ✓ Clean chrome finish
- ✓ 8" through glass handle

LED MIRRORS

with Perimeter Lights



- ✓ Smart touch "on mirror" controls
- ✓ 4 light tone and brightness options
- ✓ Built in anti-fog creates a "steam free" zone
- ✓ Quick and easy installation

BYPASS

Shower Door



- ✓ Easy clean design
- ✓ Convenient through glass towel bars
- ✓ Luxurious 10mm tempered safety glass
- ✓ Clean chrome finish



SLEGG
BUILDING MATERIALS

Available at all Vancouver Island Locations:

LANGFORD VICTORIA SAANICHTON SIDNEY DUNCAN NANAIMO TOFINO CUMBERLAND COMOX

www.slegg.com

— Est. 1883 —



SLEGG BUILDING MATERIALS
YOUR PAINT DESTINATION ACROSS VANCOUVER ISLAND



YOUR PARTNER IN PAINT



METRIE



products, which incorporate recycled materials, Harbinger products are made from 100-percent pure vinyl, making them free of heavy metals, phthalates and phenol.

“Most people don’t realize what kinds of chemicals are used in some flooring products,” points out Barbara Hudock, Territory Manager-Vancouver Island. “Because our products are pure PVC, they are very low in VOCs. In fact, our products are LEED certified with a platinum rating, which is the highest LEED standard for indoor air quality; that’s the way building codes and the construction industry are going now.”

All Harbinger planks and tiles utilize the latest in graphic image printing and embossing to create the look and feel of real slate, ceramic tile and wood grain. “We are currently revamping our entire line of products, and in the summer we will be coming out with some exciting new engineered luxury vinyl tiles and planks. We are always re-inventing

ourselves and following the latest design trends.”

METRIE - DOORS AND MOULDING

It is amazing to think that Vancouver-based Metrie started out in 1926 as a small family-owned lumber business. Today, Metrie is the largest manufacturer and supplier of solid wood and composite (MDF) interior doors and moulding products in North America, operating five manufacturing facilities and 26 distribution centers in the U.S. and Canada. Metrie’s full line up of doors and mouldings is available on Vancouver Island through Slegg Building Materials.

One of the most interesting recent developments from Metrie is the company’s exclusive door and moulding program called Option-M. The program allows customers to choose interior door and moulding combinations specially curated by professional interior designers. For contractors, the Option-M

program speeds up the material selection process and guarantees a happy customer when the job is done.

“Choosing doors and mouldings that work together to achieve a certain style is a challenge for most people; when they go into the building supply store all they see is a wall of wood and they are overwhelmed,” says Brian Vandermark, Territory Manager, Vancouver Island. “The Option-M program solves that problem by making it possible to choose a door and moulding package they know is going to match their vision when it is all installed.”

The packages created for the Option-M program are based on research into current décor trends and reflect the design looks most sought-after by consumers. There are currently five distinct door and moulding packages available through Option-M with names that reflect their styles: Bohemian, Modern Farmhouse, New Traditional, Shabby Chic and Vintage Industrial.

CUSTOM BUILDING PRODUCTS

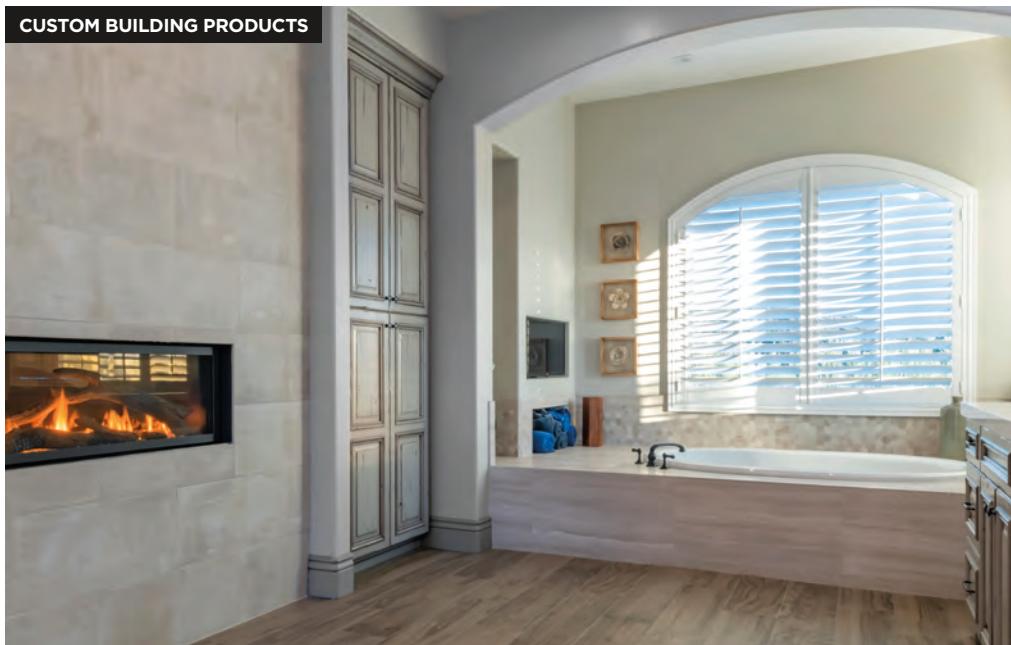
Contractors active in the flooring business are probably already familiar with Custom Building Products (CBP). A division of Quikrete, North America's largest manufacturer of cement products, CBP is a leading supplier of tile and stone installation systems for residential and commercial projects.

"Our product line is a one-stop-shop for the flooring business," says David Sherley, Sales Representative, Western Canada. "Regardless of the type of floor covering—vinyl, laminate, hardwood, tile—or the substrate, we have products to address whatever the installer is dealing with."

CBP's line-up includes a range of floor preparation products, membranes, bonding agents, thin-set mortars and mastics, performance grout, sealers and tile and stone cleaning products. In addition, CBP also provides industry-leading information resources for flooring professionals to help them get the most out of their products and systems.

"With the industry trending toward large-format tile and stone floors, it's more important than ever that installers have the right products for the job and know how to use them," Sherley adds.

CUSTOM BUILDING PRODUCTS



"For flooring professionals, having the right products and knowledge makes installations easier, faster and more durable. If the job is done right the first time, you have a satisfied customer and you won't have to go back later to deal with problems."

SILVA TIMBER LINE OF VALUE ADDED WOOD PRODUCTS

Probably no other building material is more closely associated with the West Coast of Canada than natural

wood siding and paneling. The West Coast contemporary architectural style is gaining in popularity across the country, with natural wood playing a central role as both an exterior and interior finish on homes and commercial buildings. Langley-based Silva Timber Products supplies Slegg with a range of decorative wood products in Western red cedar, Douglas fir and hemlock.

The Silva Panel is engineered for exterior applications such as fascia, cladding, feature accents and outdoor kitchens. It's an all Western red cedar cross-laminated and edge glue product that comes in 4x8', 4x10' and 4x12'. Silva Panel can also be used for interior applications such as ceiling and wall paneling. The finished panels can be supplied either untreated or pre-stained according to customer specifications and can be fire treated to a Class A rating.

Silva Plywood is another product that is manufactured but is Western red cedar face veneer overlayed on Douglas fir ply core that is used for interior wall panelling, feature walls, soffits and ceiling tile/panels.

Silva Board is a 1x6" board that has the same concept as the Silva Ply except with a 1/16" veneer on top of the plywood that allows for perfect wood

SILVA



CREATIVE | CONCEPTUAL | CONTEMPORARY



FINE | LINE

The FineLine collection brings a fresh, stylish appearance to any interior space.

FineLine's clearly defined grooved profile lines are positioned to bring linear dimension as a **MODERNIZING ACCENT** and **VISUAL INTEREST** to **CONTEMPORARY SPACES**.

Image: FineLine Alki by Lynden Door



LYNDENDOOR.COM

UNEXPECTED | STUNNING | TREND SETTING



BRINGING YOU DOORS FOR EVERY DESIGN AND BUILDING NEED



Architectural, Commercial and Residential Interior Door Collections



Wood Interior and Exterior Door Systems



Fiberglass & Steel Exterior Door Systems

Image: FineLine Denman by Lynden Door

25



AllianceDoorProducts.com



WORK ON. PLAY ON.



Bluetooth® Wireless Technology

Seamlessly stream music from mobile phones or other Bluetooth® wireless technology enabled devices



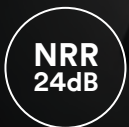
Hi-Fi Sound

40 mm high-fidelity speakers for premium sound quality



Integrated Microphone

Make and take phone calls without having to remove the headset



Noise Reduction Rating

24 decibels



3M™ WorkTunes™ Connect Wireless Hearing Protector

FEATURES



- Simple single-button interface
- Audio Assist for easy setup



- Built-in rechargeable battery with charging cord
- Auto shut-off with battery status indicator



- Lightweight, low-profile design with soft, conformable ear cushions
- Cord- and antenna-free

Available now. For details call 3M Canada at 1-800-267-4414



WE ARE ALL.

All quality. All innovative. All style.

From stunning colours to convenient features like renovation brickmoulds and interior jamb liners, we offer options to suit any project. Innovative technologies such as V-weld and triple pane glazing offer the ultimate choice in energy efficiency while our acrylic colour wrap and metal clad options bring unmatched beauty and style to any home.

We are more than just All Weather Windows.
We are all.

Scan the QR code and
discover all that we are
or visit us online at
allweatherwindows.com



material in vertical grain and has a high end look yet more affordable than solid. “Our timber slicing technology allows us to get 16 individual slices of high-grade decorative wood from every one-inch plank, so the finished board is a highly sustainable product,” explains Richard Kaufmann, CEO of Silva Panel. “The concept behind our business is to allow people to incorporate the beauty of natural wood in their project at a reasonable price while making the best use of the timber resource. The natural wood panels have a unique look and so many colour variations; no artificial product can quite capture the warmth and appearance of real wood. We give the tree a second life by honouring it in the products we make.”

BUILDER’S CHOICE SHOWER DOOR

If you are a contractor active in and around Victoria who is involved in bathroom construction or renovation, you have likely come in contact with Builder’s Choice (or BC) Shower Door. In business for 15 years now, BC Shower Door specializes in the design, manufacture and installation of custom shower enclosures. Contractors can access the company’s services directly through their local Slegg branch.

“People can buy a standard shower enclosure kit at any home improvement store, but our products can take your bathroom design to a higher level,” says Don Legault, Sales Representative.

“If you are a custom home builder, or a developer building 50 high-end townhomes, you might want something better than anyone can buy off the shelf. We can design and manufacture a custom shower door system for any bathroom, and we can measure and install it or provide a full ready-to-install package if the contractor prefers.”

When it comes to shower remodels, BC Shower Door can cut a new glass enclosure to fit any existing bathroom without the gaps and leaks that can result from trying to install a standard shower kit in a non-standard space. “We can custom fit to any surface—tile, marble or stone—and we measure and cut our glass before it’s tempered, that way we get it right the first time.”



Since 1982, The Local Name for Quality Door Products



Solid Stile & Rail Interior Doors

Fully Composite Fiberglass Entry Doors

Doorlite & Frames

trimlite.com | 604-533-4111



Handcrafted Construction Meets Modern Design

BUILDER'S CHOICE SHOWER DOOR



In addition to custom shower enclosures, BC Shower Door also manufactures and installs a variety of custom glass products, including interior and exterior glass railing systems, wine cellar doors, elevator glass and mirrors.

GOODFELLOW FLOORING

Flooring is one example of an interior product category where technology has helped to give consumers an abundance of new items to choose from. The range of choices has certainly increased when it comes to colours and styles, and advancements in the area of composites means there are also more choices in terms of materials.

Goodfellow Inc. has been manufacturing flooring materials for more than 120 years.

QUALITY STONE

EASY-INSTALL PANELS BY INSTONE



- **10X FASTER** installation than traditional masonry
- **<1 lb/ft²** for easy handling & install
- The only **Tongue & Groove** panel
- **CLIMATE SHIELD** performs in **ALL CLIMATES**
- Huge selection of profiles & colours
- Extremely low project **waste <5%**
- Thermal Insulation up to **R-6+**

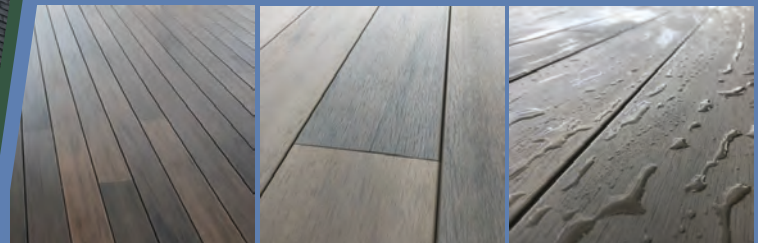


qualitystoneproducts.com

LANAI

PREMIUM PLANK DECKING

ENGINEERED FOR LIFE.



ONLY decking with 48" narrow, planks, the smallest gaps & 100% hidden fasteners to truly look like hardwood flooring.

HIGHLY resistant to heat, scratching, slipping, staining, fading, warping, & debris.

THE premium decking for those who work hard, play hard, and entertain even harder.



lanaioutdoors.com

GOODFELLOW FLOORING



The company supplies Slegg with a wide range of finished flooring products including traditional hardwood, engineered hardwood, composites and vinyl laminate. For traditional clients who insist on top-of-the-line materials, Goodfellow offers standard hardwood flooring in oak, red and white maple, hickory, walnut and several exotic woods. For clients open to trying something new, there are plenty of less expensive options.

“Engineered hardwood, which is a wood veneer fused with an engineered core, is really gaining in popularity now,” says Jeff Robinson, General Manager-B.C. “Engineered hardwood is more cost-effective than traditional wood, and it is more stable because it won’t warp



Introducing Halo...

The Halo Wi-Fi enabled smart lock. It's the uncomplicated way to get smart lock security and smart home convenience using your home's existing Wi-Fi router. Operate, manage and monitor the lock with your smartphone using the Weiser app from anywhere there's an Internet connection.



All you need is a WiFi router + smart phone + HALO smart lock.

WEISER
HOME SMART HOME™

amazon alexa

works with the
Google Assistant

Wi-Fi
Wi-Fi Enabled

WEISER Works with the
Weiser App

weiserlock.com

or cup. You will always find customers who want natural wood, but you have to be careful where you use it and moisture and humidity have to be controlled.”

Other new flooring options that are gaining in popularity include stone-plastic composite (SPC) and wood-plastic composite (WPC). Both products are waterproof and click together, but their compositions differ: rigid core SPC plank flooring is made from a combination of fine limestone powder and a polyvinyl base; WPC is comprised of recycled wood pulp and a plastic base. Using the latest graphic printing methods, both of these products can be manufactured to mimic wood, stone and ceramics in a variety of colours and textures.



METRIE
option **M**

INTERIOR MOULDING & DOOR
COMBINATIONS

modern
farmhouse

SHIPLAP

METRIE.COM

ON-TREND INTERIOR FINISHING ADDS CHARM & TEXTURE TO ANY SPACE



Taymor®

Trusted Canadian brand since 1948



Slip Stream bath collection, Slip Stream lever, and Spellbound faucet shown in Matte Black

DOOR HARDWARE

BATH HARDWARE

FAUCETS

Slip Stream

- CONTEMPORARY FLUID DESIGN
- ERGONOMIC SHAPES PROVIDE SUPERIOR QUALITY AND EASE OF INSTALL
- SLEEK ONE PIECE CONSTRUCTION



Pace Line - Round Rose
Passage



Pace Line - Square Rose
Passage



Cross Flow
Passage

Introducing Taymor's New Professional Series Levers

Cross Flow & Pace Line

- OUTSTANDING VALUE AND FRESH MODERN DESIGN •
- ONCE PIECE ROSE/CHASSIS DESIGN WITH EXPOSED SCREW FOR EASE OF INSTALLATION •

Available in Satin Nickel, Matte Black, and Polished Chrome. Choose from Entry, Privacy, Passage, and Dummy options.

AVAILABLE MAY 2020

taymor.com

EXOTIC STONE

Since 2006, Victoria-based Exotic Stone has been a go-to source for natural stone countertops, cladding and flooring. Contractor customers throughout Vancouver Island can conveniently access the company's premium products directly through their local Slegg Building Materials location.

"We specialize in granite, marble and engineered quartz, which is a composite material that is made up of crushed quartz and a binding adhesive," says owner JD Singh. "We do lots of work with contractors; right now we are working with Slegg to create a program for direct ordering and package deals where the customer can pick their colours, get

laser measured and we will build their countertop to their specifications."

In addition to countertops, Exotic Stone also carries floor tiles and slabs, backsplashes and shower surrounds. The company also offers custom cutting for bathrooms and fireplaces and an in-home fabrication service. There are a range of products and price points available, from entry-level composites up to exotic stone from Italy, India, Brazil and Turkey.

"We have definitely seen changes in the market in the last 10 to 15 years; there are lots of composite, engineered products available today that are designed to mimic natural stone and use 3-D graphics to look as natural as

possible," explains Singh. "Natural stone countertops, flooring and cladding will always have their niche because manufactured products don't have the same feel and depth of colour."

AMES TILE

Ames Tile got its start in 1912 with a single location in downtown Vancouver. Still a family-owned business today, the company has grown into one of Western Canada's premier suppliers of tile and stone, with locations in Burnaby, Vancouver, Calgary, Edmonton and Winnipeg. Ames Tile products are distributed on Vancouver Island through Slegg Building Materials.

Ames carries 15 distinct types of tile and stone products, including ceramic wall tile and glazed and dry-glazed porcelain tile. These materials are available in dozens of styles and colours, allowing customers to achieve virtually any design look.

"All the style trends today are moving toward larger-format tiles," says Lori Grant, Director of Architectural and Designer Sales. "Years ago the biggest tiles were only about 12x24 or smaller, and those tiles are still around. Now it's common for architects and designers to spec tiles and stone slabs that are 36x36, 36x72 and even larger than that. The idea is to get a cleaner look with very few, thin grout lines, or no grout lines at all.

In addition to tile and stone, Ames markets a variety of setting and underlayment products as well as cleaners and sealers. The company also offers installation training for professionals. Adds Grant: "With the large-format tiles, it is important for contractors to remember that handling and installation are key. Leveling of the tiles or slabs is vital to avoid cracking and to ensure a quality finish, so that might require a lot of substrate preparation. For that reason the market is moving toward professional installation." ■



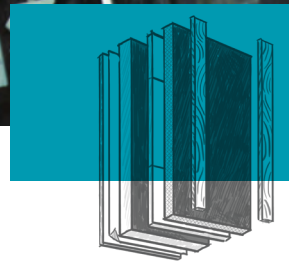
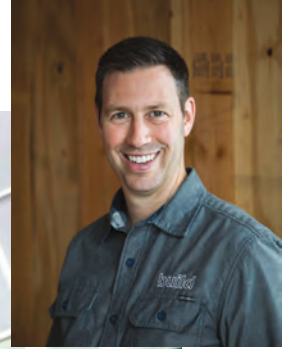


SUSTAINABLE, HIGH-PERFORMANCE Roofing Shingles

WHEN IT MATTERS™

Unlike standard shingles, Malarkey **shingles are rubberized** for superior all-weather resilience, incorporate **upcycled tires and plastics** to enhance durability and reduce landfill waste, and integrate **pollution-reducing granules** to help clean the air.

Matt Risinger
Builder and building
science expert



Continuous stone wool insulation that improves thermal performance

Trailblazing requires confidence, expertise and a desire to do things right. Matt Risinger uses non-combustible, vapor-permeable and water-repellent Comfortboard™ to help wall assemblies dry to the outside, keeping clients

comfortable inside. It cuts down on heat loss and improves energy efficiency so that what you build today positively impacts your business tomorrow.

Comfortboard™ has received ICC-ES validated product acceptance as continuous insulation for multiple applications. For more information visit rockwool.com/comfortboard





DESIGN & DURABILITY

At James Hardie, we pride ourselves on providing building products that help you craft more sustainable homes and buildings. Our commitment to sustainable manufacturing practices extends to the development of products that last longer, requires less maintenance, and contribute to energy efficiency.



Discover the difference of fiber cement siding at [jameshardie.com](https://www.jameshardie.com)

SPEND LESS TIME IN THE SHOWER



GoBoard® LT

TILE BACKER BOARD

A superior alternative to cement board for showers, counters and floors because it is:



EASY TO CARRY

A fraction of the weight of cement board



EASY TO CUT

Simply cut with a utility knife on site



WATERPROOF

Only the joints and fastener locations need to be sealed

Learn more about GoBoard® LT at
www.JM.com/Canada/GoBoardLT or
Visit your local Slegg Building
Materials location



Johns Manville
A Berkshire Hathaway Company

MORE ON THE FLOOR



New **products** and **methods** are bringing a whole new dimension to floor installation

Anyone who believes installing a quality floor is as easy as slapping in some peel-and-stick tile or rolling out some sheet vinyl clearly has a lot to learn about modern flooring materials.

Today's floors often require extensive substrate prep, and stringent Building Code requirements demand high-performance floors that create a sound barrier within the building. Thankfully for flooring installers, there are innovative products available to help them tackle these challenges.

FLOOR LEVELING

Several factors have driven trends in the flooring segment in recent years. For example, new composite materials and image-printing technology have made it possible to create flooring products with the look and feel of natural wood, but without the problems, like cupping and warping, that comes with natural wood floors. Likewise, this same technology has made it possible to produce ceramic tiles that are almost indistinguishable from more expensive natural materials like marble, granite and slate.

Similarly, a shift in style trends has inspired new product innovation in the flooring segment. Over the course of the last decade or so, the preference among architects, designers and consumers has moved to large-format flooring

materials. While 2-inch hardwood strips and 8x8 or 12x12 tiles were once standard, now it is more common to see 8-inch engineered wood planks and tiles ranging from 24x24 up to 48x48-inch slabs and larger. These large-format materials, in turn, call for improved installation products and methods.

"The large-format flooring materials give a more contemporary, seamless look, with fewer joints and grout lines; that's what people are after today," says David Sherley, Sales Representative-Western Canada for Custom Building Products, which supplies Slegg with a range of flooring and installation products. "But the large-format floor coverings are much less forgiving for installers; they require a perfectly level substrate or the floor ends up looking like a river, and any uneven area can lead to cracking of the tiles or the grout."

One of the big challenges facing flooring professionals today is the gap that now exists between the tolerance level of the substrate and the tolerances required by large-format flooring products.

"The concrete forming trade is Division 3, so they are involved early in the build and they are used to working to a floor tolerance level of one-quarter inch over ten feet," Sherley explains. "The finish flooring trades are Division 9, and they must have

QUIET WALLS DONE RIGHT

Exceed customer expectations and crush tight build schedules with QuietRock Sound Reducing Drywall. With 5/8" QuietRock EZ-SNAP, Architects and Builders can achieve fire ratings and Sound Transmission Class (STC) ratings in partitions using less material and time needed to install. PABCO's patented paper-free, viscoelastic polymer and gypsum core boosts STC performance while speeding up cutting time. Simply put, QuietRock EZ-SNAP sound reducing gypsum panels are a cut above the rest.

Visit www.QuietRock.com/tools for up-to-date STC performance on many UL fire rated assemblies.

 **QuietRock**®

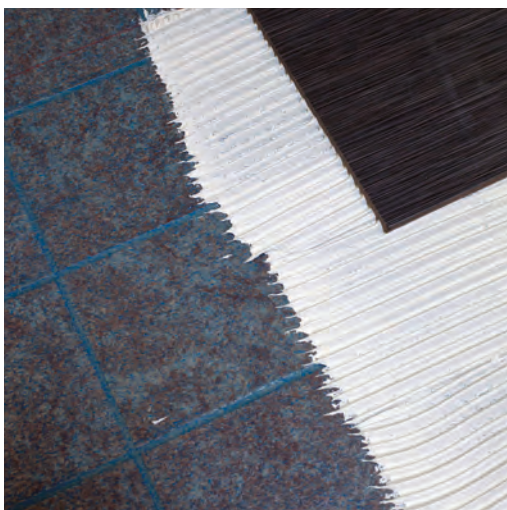
California Pacific Medical Center, San Francisco, CA: QuietRock EZ-SNAP installation

Custom Building Products' LevelQuik RS is a quick-setting underlayment (walkable in 4 hours) that levels from feather edge to 1.5" (3.8 cm) thick in one pour.



a tolerance of one-eighth of an inch over ten feet to make sure the surface can accept large-format materials. Someone has to get the substrate to the appropriate tolerance level, and the self-leveling products exist today to do that."

Slegg carries self-leveling products specifically designed for concrete and plywood substrates. There are also special primers available that can be applied directly over old adhesive residue. "It used to be that when you removed old sheet vinyl or tile you had to scrape or grind the old adhesive down; now the technology allows you to sweep, prime and pour a self-leveling compound over the old adhesive. That eliminates a time-consuming, labour-intensive step for flooring contractors."



Custom Building Products' Multi-Surface Bonding Primer (MBP) is a primer engineered to deliver adhesion on substrates where bonding is difficult. MBP prepares the surface with a textured finish suitable for installation with modified cement mortar and self-leveling underlayments.

SOUND PROOFING

Of course, installing quality floors isn't just about getting the level right. Depending on the type of structure, the way the floors are constructed can play a major role in mitigating sound transmission to maintain noise levels and privacy between adjoining units and floors. This obviously matters for anyone who lives in a multi-family building, but also for those living in single-family homes.

"Noise travelling between floors is annoying, whether its loud music or just the clicking of shoes on the floor above," says Marie-Michelle Carrier, Vice President of Sales for Contrio, marketing arm of Quebec-based MSL, which manufactures floor and wall

MSL's SONOpro is a high performance underlay membrane specifically designed to absorb impact noise under concrete screed and self-leveling floor systems






Cordless • Electric • 2-Stroke • 4-Stroke

If You NEED IT We Can GET IT

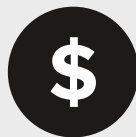
When Quality & Service Counts – Choose Makita

SONOPAN

Noise STOP Technology™



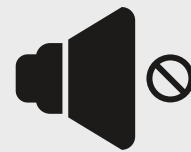
RECYCLED WOOD



AFFORDABLE



LIGHTWEIGHT



STOPS NOISE

sonopan.com

1.800.561.4279

@SONOpan_msl



MSL's SONOpan acoustic panels absorb a wide range of sound frequencies, allowing them to significantly reduce the transmission of sound and vibrations from one floor to another.

sound-proofing materials. "The B.C. Building Code was changed in 2018 to demand stricter sound remediation standards, especially in multi-family buildings. These materials have been changing and there are excellent sound-proofing solutions available now that are designed for specific applications and flooring materials."

One example of a material-specific floor sound proofing solution is **SONOpro**, a high performance underlay membrane specifically designed to absorb impact noise under concrete screed and self-leveling floor systems. Made of an impact noise absorbing acoustic felt combined with a high-grade polyethylene film, SONOpro permits decoupling of the floor from the structure to create a continuous seal. **SONOleed**, meanwhile, is a high-


performance acoustic membrane designed to absorb impact noise on ceramic flooring. "MSL also has sound-proofing membranes designed for use under floating floors, engineered wood, luxury vinyl tile and concrete floors; basically any flooring material."

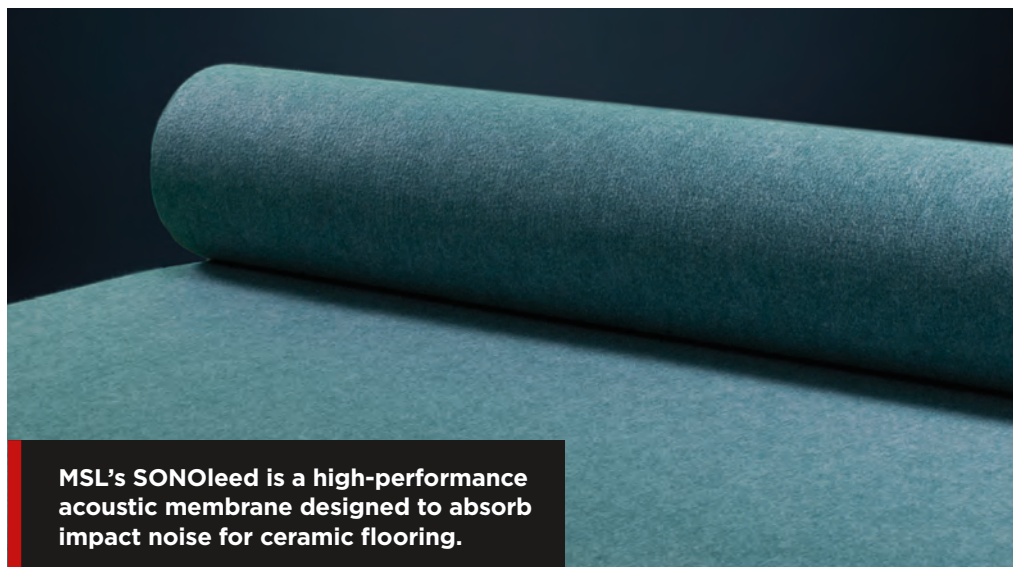
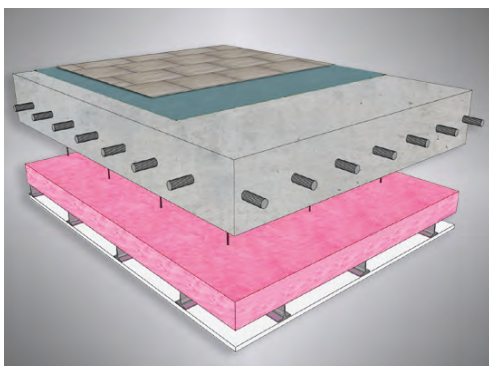
When it comes to combating airborne noise, MSL's **SONOpan** acoustic panels utilize innovative dampening technology. SONOpan panels feature cavities of varying dimensions and depths on both sides that absorb a wider range of sound frequencies, allowing them to significantly reduce

the transmission of sound and vibrations from one floor to another.

"SONOpan is perfect for homes with basement tenants or kids who play in the basement, or for people who have music rooms or home theatres downstairs," Carrier explains. "The SONOpan panels are light and easy to install on the floor joists under the ceiling drywall, and because the panels are made of natural materials, installers don't have to use gloves or protective clothing."

"The fact that these products are made of 100-percent recycled material is really important for many people today, especially in places like B.C. MSL gets its wood fibre from ground-up construction waste which is then combined with starch instead of glue. Lots of other sound-proofing materials are made of recycled rubber, so they can have off-gassing issues."

Carrier points out that MSL's floor sound-proofing panels and membranes contain no formaldehydes or VOCs, and also help to prevent the transmission of odours, smoke, carbon monoxide and mould-causing water vapour that can also travel between floors. 

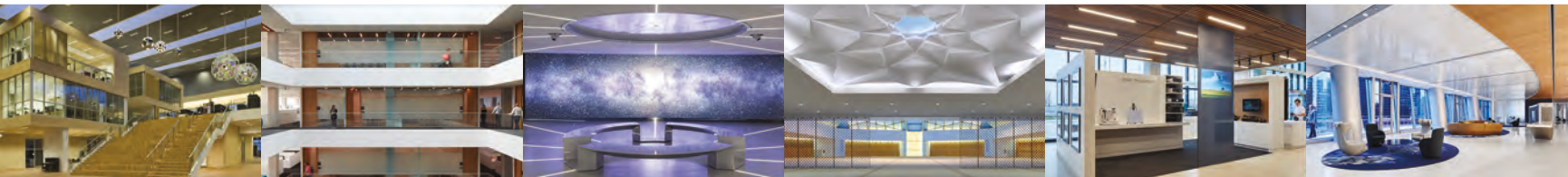


MSL's SONOleed is a high-performance acoustic membrane designed to absorb impact noise for ceramic flooring.



be quiet.

Our results speak for themselves. Core Acoustics is Canada's trusted source for quality acoustic solutions - acoustical ceiling and wall systems, sound control products, noise barriers and more.



coreacoustics
Integrated Acoustic Systems
A GMS COMPANY

Visit us at the Slegg Pro Show and see how we're redefining sound at its core.

TOPAKUSTIK® | SKY ACOUSTICS | LINEA | CGC™ | CLIPSO® | TECOUSTICS™ | HELIOS® | PLITEQ® | MSL®

For more information call or email | 905.652.4360 | info@coreacoustics.ca

HARDSCAPE ARCHITECTS



EXPOCRETE

Not everyone has a green thumb, but there are non-organic, low-maintenance ways to beautify your outdoor spaces

There is nothing quite like a well-kept lawn and garden to make a property look its best. Rows of bright flowers and plants and perfectly trimmed grass complement any building or home design and reflect the owner's pride in their property. They also reflect something else: a heck of a lot of work.

Whether the owner does the gardening themselves or pays a landscaper to do it, beautiful lawns and gardens don't fall from the sky. Unfortunately, not everyone is born with a green thumb or the money to pay for one, and few people have the time or physical capacity to put in the work an extensive garden requires. Luckily there are a number of non-organic, hardscaping options that require little or no maintenance and make for beautiful outdoor spaces in their own right.

Great Ideas for Outdoor Living



Standard Classic Series - Shadow



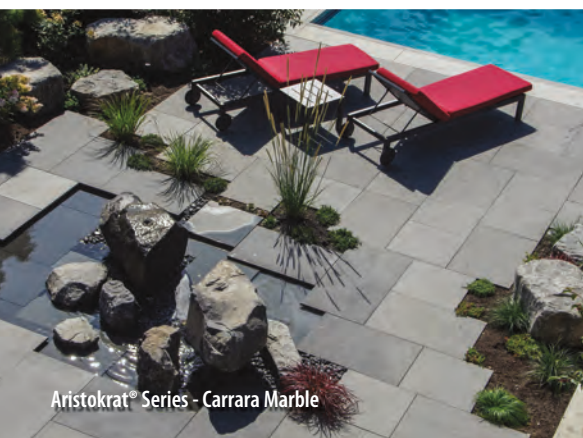
Aristokrat® Series - BlueStone



Pisa OneStone and Villa Stone



Aristokrat® Series - Coffee Cream



Aristokrat® Series - Carrara Marble



HydraPressed Slabs - Texada



Piazza Series - Granite

Working with Slegg for over 20 Years!



• Interlocking Pavers • HydraPressed Slabs • Retaining Wall Systems • AquaPave® Permeable Paving Systems • Aristokrat® Series 2 cm Porcelain Slabs

www.pavingstones.com



**SLEGG PROUDLY SUPPLYING
BASALITE CONCRETE PRODUCTS**

WESTERN CANADA'S PREFERRED HARDSCAPES
& CONCRETE MANUFACTURER

BASALITE.CA



MICROSILTM
Anchor Grout



Valley StoneTM
Retaining Wall

Concrete Blocks



Patio Slabs



Retaining Wall



Interlocking Pavers



Industrial Products





EXPOCRETE

EXPOCRETE

www.expocrete.com

The growth in the popularity of hardscaping for outdoor spaces is a direct result of the “outdoor living” trend. Due to factors like the rising cost of travel and vacation property in recent years, more and more homeowners are opting to invest heavily in their own backyards, creating often elaborate, year-round outdoor spaces in which to relax and entertain. While lawns and gardens certainly play a role, it is the hardscape that provides the outdoor living platform.

“Fifteen years ago the standard backyard landscape included a deck or patio with a table and chairs and an umbrella,” says Bruce Stickney, Key Account Manager for Expocrete, which markets a range of concrete pavers, slabs and retaining wall systems under the Belgard and Allan Block brand names. “Today a backyard landscape might include a fire pit, a built-in barbeque

or an outdoor kitchen, a water feature and an entertainment area with a TV, a stereo system and mood lighting; all the amenities you’d have in the house.”

These modern outdoor spaces are usually built on patios consisting of pavers, concrete or porcelain, or stone slabs. While some homeowners still opt for wooden decks, Stickney points out that decks have their own issues: “Wooden decks deteriorate over time and can become a safety issue, but pavers and stone slabs are an ‘at-grade’ option that will basically last a lifetime. Plus hardscape products now come in a wide variety of colours and styles, from rustic and classic to clean and modern.”

Retaining walls can also be an essential part of a backyard landscape, especially in regions like the west coast where the terrain is variable. “Property is so expensive now and retaining walls can give you more level, useable land on a hilly lot.”



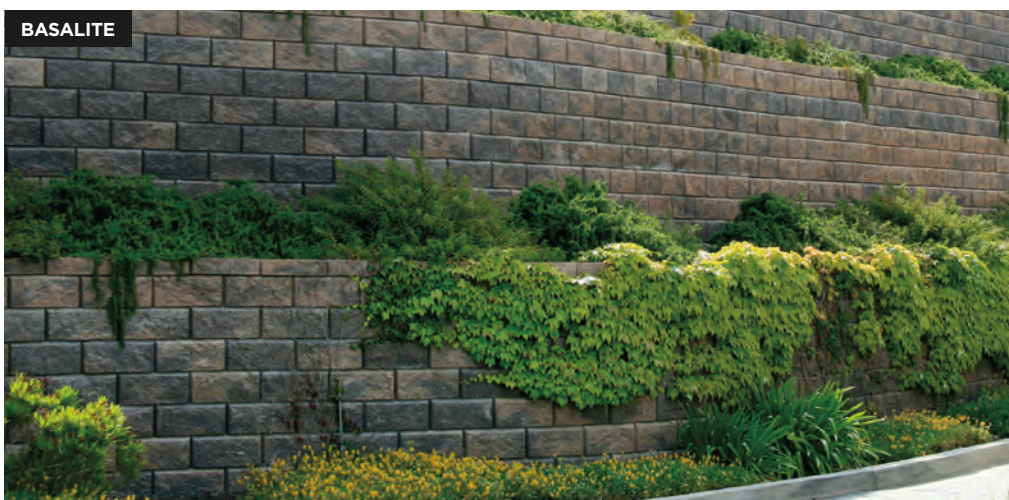
Customers interested in hardscaping options can now take advantage of some high-tech tools to help them create their perfect outdoor space. Visitors to the Expocrete site can see images of hundreds of finished projects, and there is now a downloadable app that allows users to create their own designs and get material estimates. Stickney says Expocrete also has an in-house design studio that will work with contractors to come up with custom designs and estimates for their clients. “It’s a huge benefit for contractors who work with us.”

BASALITE

www.basalite.ca

Their maintenance-free nature is just one attractive aspect of hardscaping products. Once installed, these materials are also easier to repair and replace than some other competing options.

“Pavers are a much more cost-effective, and attractive, option than other hard materials like concrete or asphalt for example,” explains Chris Knight, B.C. Technical Sales Representative for Basalite, which markets a range of paver and outdoor living products. “Plus, if you need to get under the pavers for any



BASALITE





Belgard now available at Slegg Building Materials

belgard.com | expocrete.com

New for 2020

INTRODUCING BONNEVILLE PLANK

Slegg Building Materials is making the outside your kind of beautiful with Belgard Pavers, Walls and Elements.

Start your inspirational journey at your local Slegg dealer to browse the outdoor displays or click onto Belgard.com.

Ask for a complimentary 3D rendering of your outdoor project courtesy of Belgard Design Studio.



BELGARD OUTDOOR LIVING
Tandem Modular Wall in Madria finish





rymar

WE ARE CANADA'S #1 CHOICE!

**SUPPLIER OF SYNTHETIC GRASS &
RECYCLED RUBBER PRODUCTS**

Visit us online at **RYMAR.CA**
1-888-924-7277



AVAILABLE AT



SLEGG
BUILDING MATERIALS

LOCATIONS ACROSS THE ISLAND!

reason, to access pipes or cables, you can just lift a section and re-lay it afterward, rather than break it up. And if pavers ever get chipped or stained, you can replace the bad ones easily.”

Manufacturing technology has opened up a whole new range of design options in the paver category. Whereas in the past the paver colour palette was somewhat limited to various shades of grey and red, now paver colours range from light tans and browns all the way up to pewter, charcoal and ebony. You can also mix and match colours to complement an overall design. Says Knight: “We’re finding that this is a growing trend, especially with more modern designs, where the hardscaping materials match the exterior finishes on the structure.”

Knight says retaining wall products are a growing part of Basalite’s hardscape business on the west coast as municipalities expand into more challenging terrain: “I have seen whole housing developments that were made possible using our Valleystone retaining wall product; Valleystone has no lip and installs almost vertically, which makes it easier for installers because it doesn’t require bracing on every course.”

As more property owners opt for hardscaping products for their outdoor spaces, it is becoming increasingly important for landscape contractors to become better acquainted with the products on the market and how to properly install them. To that end, there are industry groups — Interlocking Concrete Paver Institute (ICPI) for pavers and National Concrete Masonry Association (NCMA) for retaining walls — that offer online courses for installers.

“Contractors can take courses through those groups, and once they have installed a certain amount of square footage, they can qualify as a certified installer,” Knight explains. “That’s good for customers and good for the industry, because there are lots of people out there who don’t have the correct training.”



RYMAR

www.rymar.ca

While the maintenance-free durability of hardscaping products is hard to ignore, there are undoubtedly people out there who still prefer the look of a thick, green lawn when it comes to their perfect outdoor space. Well, there is one product that makes it possible to have the best of both worlds: synthetic grass.


Unfortunately, the term “artificial turf” carries somewhat of a negative connotation. This stems primarily from memories of the original stuff that first started to appear in sports stadiums in the 1970s, that flat, carpet-like material that was heavy on the artificial and light on the turf. The modern version of this product is more accurately called synthetic grass, and it can easily be confused with the real thing.

“Synthetic grass can be a great option for a variety of reasons,” says Michael Bulva, B.C. General Manager for Ryamar, the largest supplier of synthetic grass in Canada. “It is perfect for small areas where grass just won’t grow, and it is also a good option for individuals who like the look of grass but are not physically able to keep up the lawn maintenance required.”

Ryamar synthetic grass comes in

a range of thicknesses and blade lengths that are designed for specific applications, everything from backyard putting greens to dog runs. Ryamar’s Tri-Blend product even has brown blades of “dead” grass woven among the green fibers to make it look even more natural.

In terms of installation, synthetic grass goes in much like paving stones, set on a compacted base of limestone screening and crushed stone to keep it level and allow for easy drainage. Once the turf is installed, an infill layer of washed silica sand is brushed into the fibers to help protect the base and provide support for the synthetic blades. Ryamar also offers a mineral infill product called Zeolite that acts to suppress the smell of pet urine. “Zeolite is an active enzyme that breaks the organic materials down so they can wash through the turf mat.”

Knight points out that synthetic turf can be maintained with an occasional brushing to keep it looking its best. “From an environmental perspective, it’s great because you don’t have to water it to keep it green, and watering lawns is prohibited in some areas of the province in the summer.” 



Proboard 4 & 6

Proboard offers the durability of steel with the aesthetics of wood. Over 30 solid colors and 12 woodgrain finishes to choose from. Steel cladding is a noncombustible building product that has 30% recycled content and is 100% recyclable. **Make steel your long term solution!**

Acorn

Autumn

Espresso

Frontier

Saddle

Barn Board

Gunstock

Durango

NEW

Homestead

NEW

Ponderosa

NEW

Canyon

NEW

Wagonwood



www.westform.com



Integrity, innovation and quality.

Bent Tab Stud:

The next generation of steel framing.

www.bmp-group.com | sales@bmp-group.com

MONTREAL
800-263-3455
commande@bmp-group.com

TORONTO
800-668-2154
tor-orders@bmp-group.com

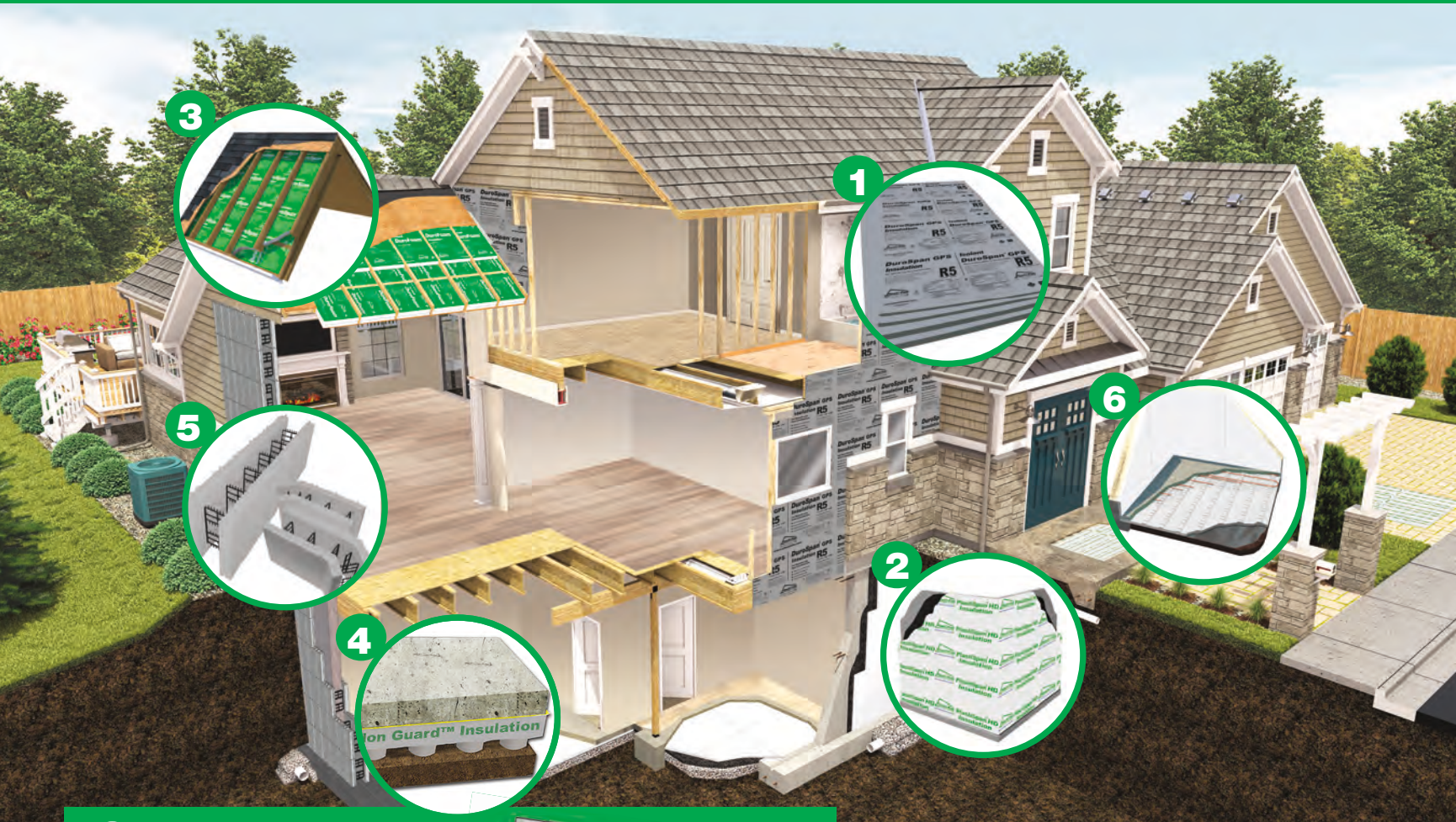
CALGARY
800-665-2013
cal-orders@bmp-group.com

EDMONTON
800-563-1751
edm-orders@bmp-group.com

VANCOUVER
800-818-2666
van-orders@bmp-group.com

The Insulation Choice of Construction Professionals Since 1968

Plasti-Fab®
EPS PRODUCT SOLUTIONS
Better building ideas from PFB™



1 Featuring
DuroSpan® GPS
Insulation
Continuous
insulation
required by
energy codes.



Other EPS Product Solutions
to meet our customers' energy
efficiency goals:

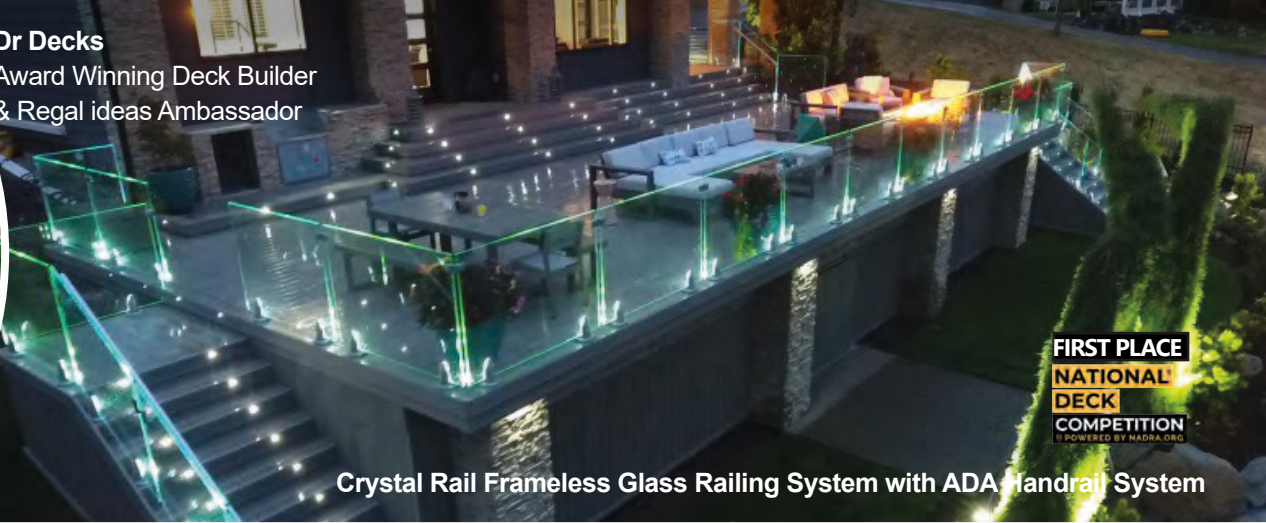
- 2. PlastiSpan® HD** Insulation
- 3. DuroFoam®** Insulation
- 4. Radon Guard®** Insulation
- 5. Advantage ICF System®**
- 6. PlastiSpan® HD** Hydronic Insulation



SCAN NOW for an
interactive version of this
house, and to learn more
about our EPS products
and services.



Dr Decks
Award Winning Deck Builder
& Regal ideas Ambassador



FIRST PLACE
NATIONAL
DECK
COMPETITION
POWERED BY NADRA.ORG

Crystal Rail Frameless Glass Railing System with ADA Handrail System



SECOND PLACE
NATIONAL
DECK
COMPETITION
POWERED BY NADRA.ORG

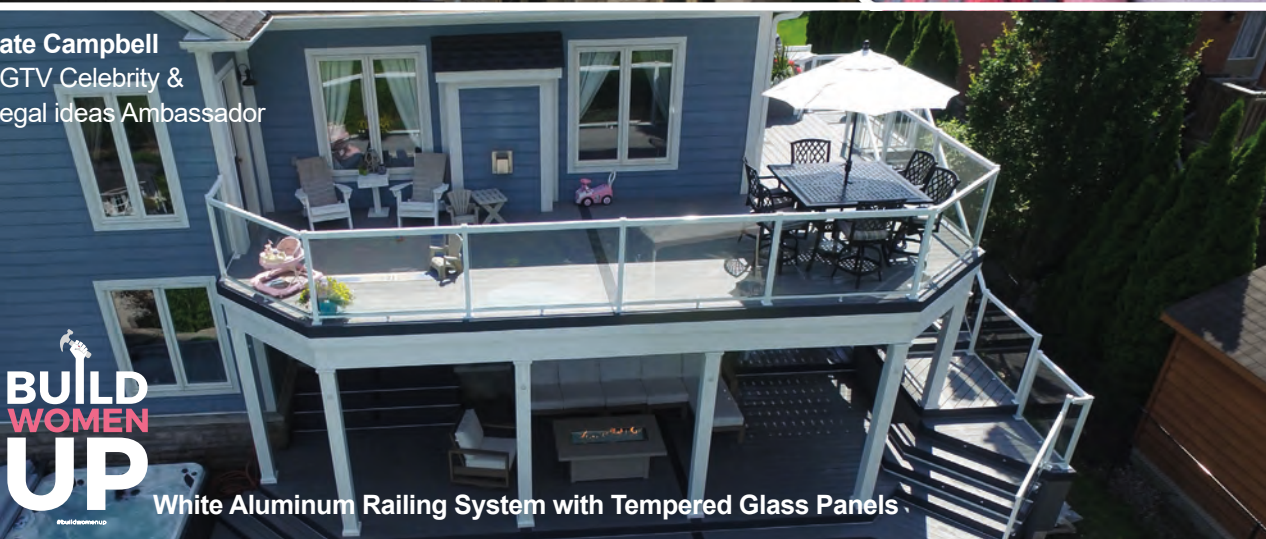
Crystal Rail Frameless Glass Railing System



The Brolaws
HGTV Celebrities &
Regal ideas Ambassador



Kate Campbell
HGTV Celebrity &
Regal ideas Ambassador



BUILD
WOMEN
UP
#buildwomenup

White Aluminum Railing System with Tempered Glass Panels

**The Railing Brand of Choice for Homeowners,
Contractors and Builders!**

Regal ideas

RESISTO®

BUILDING PRODUCTS

Waterproofing

Insulation

Maintenance

WALL SOLUTIONS

BUTYL FLASHING TAPE

BENEFITS

- Superior adhesion at temperatures ranging from -15 to 65 °C (5 to 149 °F) without primer.
- UV resistant for 180 days.



AIR AND VAPOR BARRIER MEMBRANE

REDZONE PRO

BENEFITS

- Self-adhesive: quick, cost-effective and easy installation.
- Self-sealing around screws and nails.



SELF-ADHESIVE AIR/VAPOUR BARRIER MEMBRANE

SOPRASEAL STICK 1100 T

BENEFITS

- Excellent adhesion to various substrates.
- Self-sealing membrane ensuring continuous waterproofing.



VAPOR-PERMEABLE AIR BARRIER MEMBRANE

REDZONE STICK VP

BENEFITS

- Better adhesive properties than products from the competition (without primer).
- Up to 180-day UV exposure.



Layering up

Outsulation products will play a key role in the drive to Net-Zero



Anyone involved in the contracting profession across Canada should certainly be aware by now that the National Building Code is changing. Although the code in individual provinces may lag by a year or two, Canada is well on the way to Net-Zero construction by 2030, so contractors and building materials manufacturers are looking for innovative ways to meet new the code requirements.

The core consideration in Net-Zero construction is, of course, energy efficiency. The first step on the path to limiting energy consumption is ensuring that the structure is as efficient as possible when it comes to keeping warm air inside in the winter and outside in the summer. While doors and windows always play a huge role in this regard, builders are increasingly looking to the building envelope itself as a place to improve the overall energy efficiency of the structure. To that end, materials manufacturers have responded with new exterior insulation products designed to augment traditional wall system construction.

Not only is the “outsulation” approach giving builders a big boost in their efforts to meet stricter code requirements, exterior insulation has many additional benefits besides R-value. *Island Builder* recently spoke to some leading insulation manufacturers about what the outsulation trend can do for both contractors and homeowners.

GRACE VYCOR® enV-S™

weather resistive barrier

☑ **Vapor Permeable**

"Breathable" membrane prevents moisture from becoming trapped in the wall cavity

☑ **Fully Adhered**

Installation requires no mechanical fasteners or taping of seams

☑ **Primer FREE**

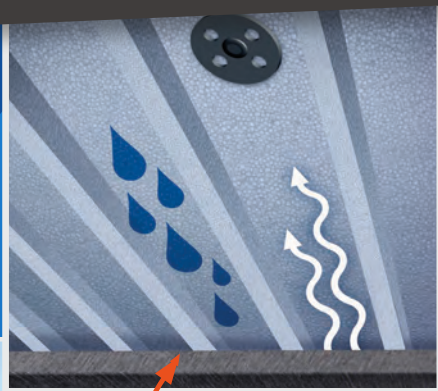
Strong adhesion—to unprimed plywood and oriented strandboard (OSB).



Contact your local representative for details!

Vertibreak® RAINSCREEN INSULATION

An innovation by **POWER**
POWERHOUSE PRODUCTS



Rainscreen & Insulation in One!

**Meet the new Energy Step
Code with the Fastest, Easiest,
Best-Performing, High Energy
Efficiency Rainscreen Wall!**



*Intertek Tested for Canadian
National Building Code
Compliance*



*Fast, Easy and Versatile;
works well with most claddings*



*Use 2x4 instead of 2x6
lumber and save*

Contact your local representative for details!

Rockwool's rigid Comfortboard product is used when the cladding is attached to the structure using long screws connecting girts or strapping through the insulation.



ROCKWOOL

www.rockwool.com

Changes mandated by B.C.'s Energy Step Code kicked in this past December, and most municipalities on Vancouver Island now require builders to build to Step 3 on many types of projects. As code demands become more stringent, it is becoming increasingly clear that effective insulation will play a central role in getting buildings to Net-Zero.

"The Energy Step Code replaces the prescriptive energy efficiency requirements of the B.C. Building Code with performance-based energy targets," explains Omar Abu Holy, Specifications and Sales Representative – Western Canada and B.C. for Rockwool. "The nature of a performance-based code is that there are many potential solutions for compliance, and using outside insulation is becoming a more realistic option to achieve the R-values needed to help in meeting code targets."

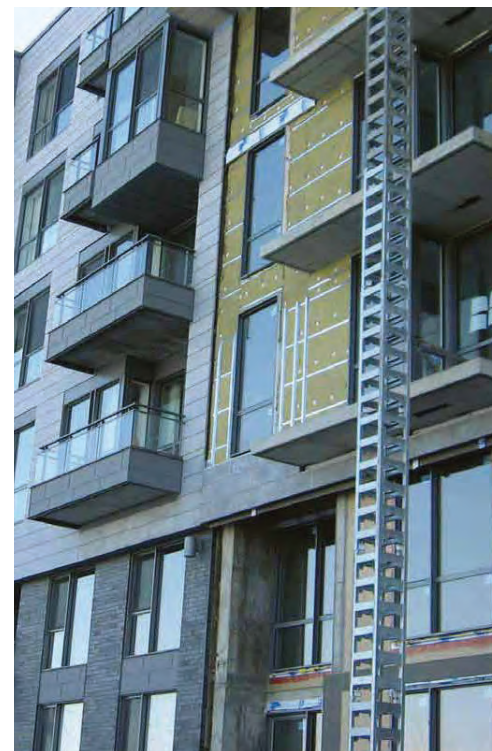
One of the main benefits of taking the outsulation approach is that adding an extra layer of material to the exterior of

the structure helps to minimize thermal bridging through the standard stud frame assembly.

"The use of exterior continuous insulation allows for higher thermal performance because it is not limited by the width of the stud cavity," explains Holy. "It also helps to get the full R-value potential from the insulation between the studs, because effective R-values account for insulation, thermal bridging from framing, interior finishes, sheathing and cladding."

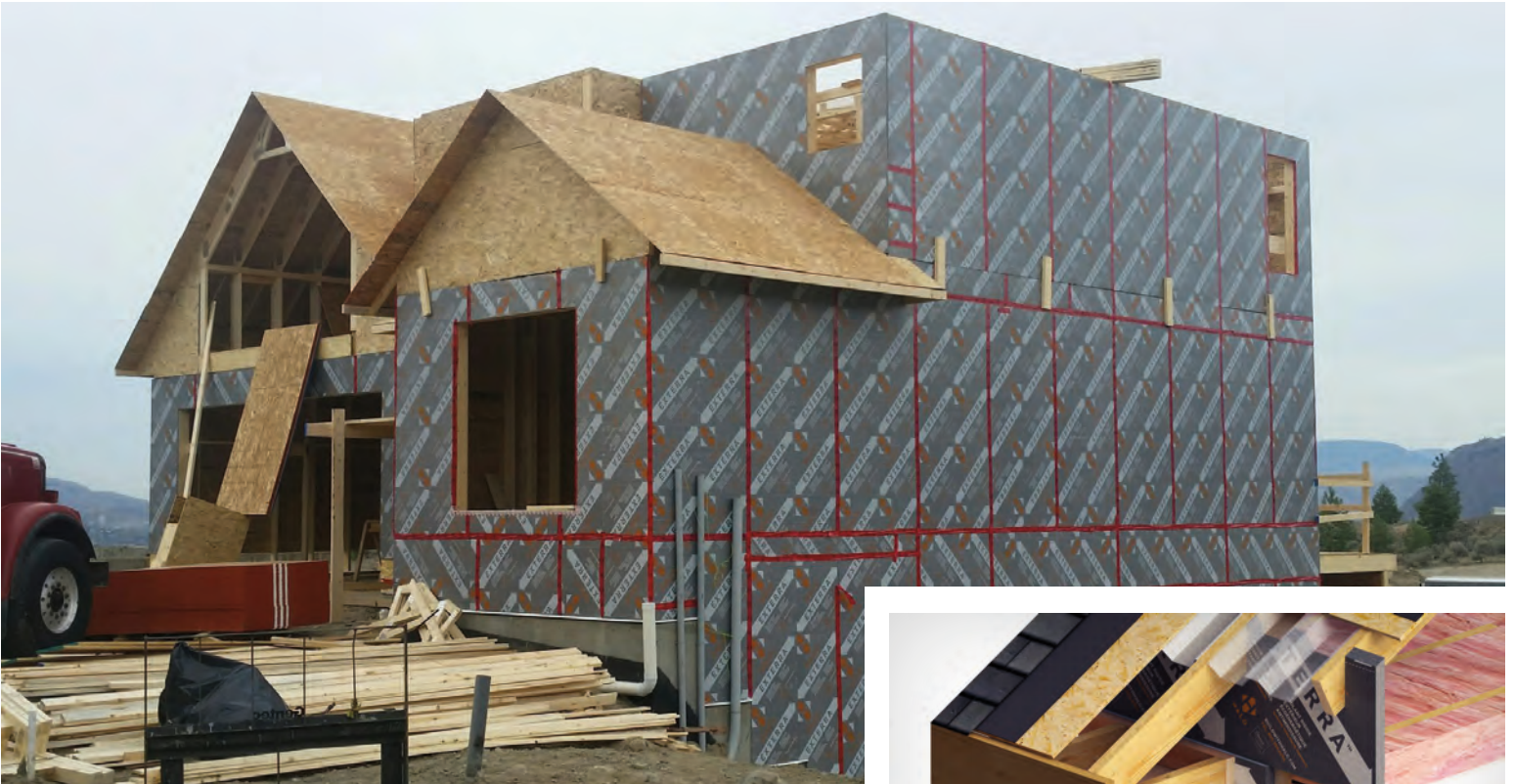
Rockwool has two main product types for exterior insulation. Cavityrock is a semi-rigid product that is used when cladding is attached to clips/Z-girts, clip-and-rail or masonry ties; the insulation goes in between those elements and is fixed to the substrate with impaling nails or screws. The rigid Comfortboard product is used when the cladding is attached to the structure using long screws connecting girts or strapping through the insulation.

"The combination of the continuous exterior strapping, long fasteners and rigid insulation creates a truss system to



Rockwool's Cavityrock is a semi-rigid product that is used when cladding is attached to clips/Z-girts, clip-and-rail or masonry ties.

support lightweight to medium-weight cladding systems," adds Holy. "The only thermal bridges through the exterior insulation are the long galvanized or stainless steel screws (GRK screws)."



HALO

www.BuildWithHalo.com

Another good example of the innovative exterior insulation options now available is HALO's Exterra product. Beaver Plastics first introduced Exterra into the Canadian market just four years ago, but it has been a leading insulation material in Europe for decades.

Exterra is made of a permeable graphite polystyrene core covered on both sides with a perforated laminate layer. The company says the graphite acts to reflect and absorb radiant energy, increasing insulation capacity by as much as 18% compared to conventional insulation.

"The composition of the Exterra boards delivers a nominal R-value of R-5.0 per inch, compared to about R-3.8 to R-4.0 for conventional boards," says Lyle Hamilton, Sales Manager for Beaver Plastics. "Plus Exterra delivers more stable long-term thermal resistance, which is important in B.C. because the new Step Code refers to the actual thermal resistance of the building

assembly at 180 days or longer. Contractors need to pay attention to that because the R-value of some insulation products is highest when it is manufactured and dissipates over time."

Because Exterra's laminate outer layer is perforated, the insulation is highly breathable, allowing air to move between the frame and the exterior cladding. That means water vapour from inside the building can pass to the outside, keeping the wall assembly dry and healthy.

"The laminate layer also acts as a waterproof barrier that stops moisture from penetrating into the wall assembly from outside, so it eliminates the need to install traditional house wrap," adds Hamilton. "So builders can meet code requirements for both energy efficiency and moisture management in one step, which saves time and money."

With new code demands pushing for ever-higher R-values, Hamilton warns



HALO's Exterra product is made of a permeable graphite polystyrene core covered on both sides with a perforated laminate layer. The graphite acts to reflect and absorb radiant energy, increasing insulation capacity.

that a real danger exists that structures can become too tight if the proper materials are not utilized to meet higher efficiency standards.

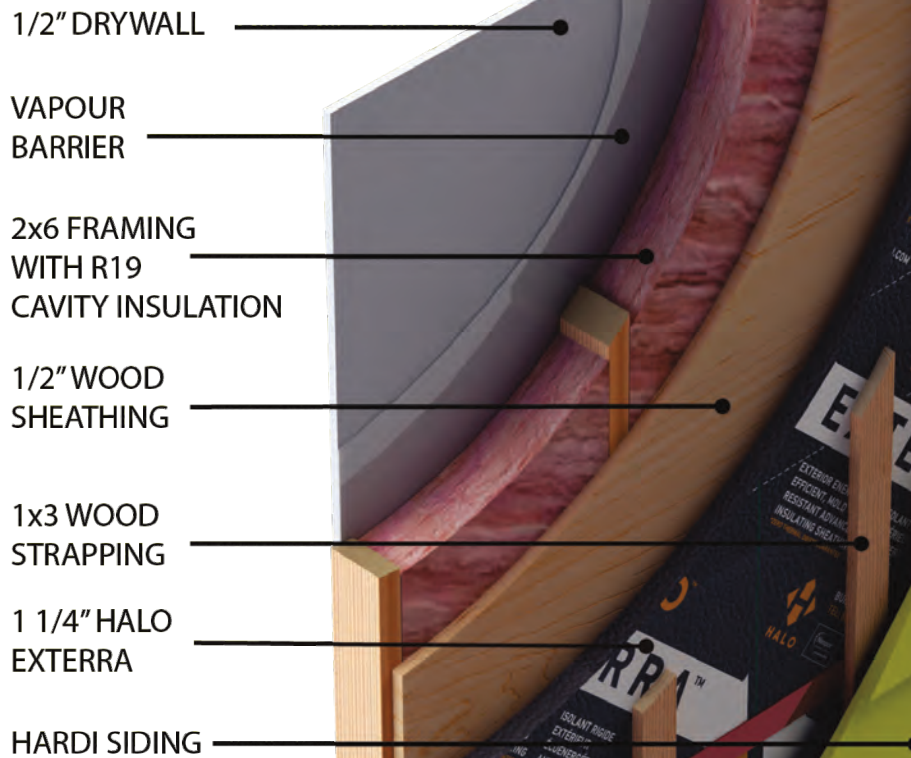
"The building envelope will have to be highly energy efficient to get to Net-Zero, but builders have to be careful not to create unintended consequences," he says. "If you build an exterior wall assembly that traps moisture, that can create mould and mildew that leads to health issues, and moisture can cause rot that compromises the structure."



Continuous Insulation Solutions that meet BC Building Codes

THE HALO® EXTERRA® R-24 WALL ASSEMBLY

EFFECTIVE R-24 HALO® WALL ASSEMBLY 8 1/2" Wall Thickness



- ✓ **Breathable** (will not trap moisture)
- ✓ **Weather Barrier** (meets BC Code as a weather barrier)
- ✓ **Highest long-term R-value** (R-5 per inch*)
- ✓ **Eliminates the need for an additional weather barrier**
- ✓ **40% increase in effective R-value** for less than \$1.00/sq.ft. of wall





TOTAL HEAT, AIR & MOISTURE MANAGEMENT.

ComfortSHIELD® Building Enclosure System.

High Performance Roof System

- TruDefinition® Duration® Shingles
- Deck Defense® underlayment
- Weatherlock® ice & water barrier
- PROPINK® loosefill insulation
- Raft-R-mate® attic vents

CodeBord® Exterior Air and Moisture Management System

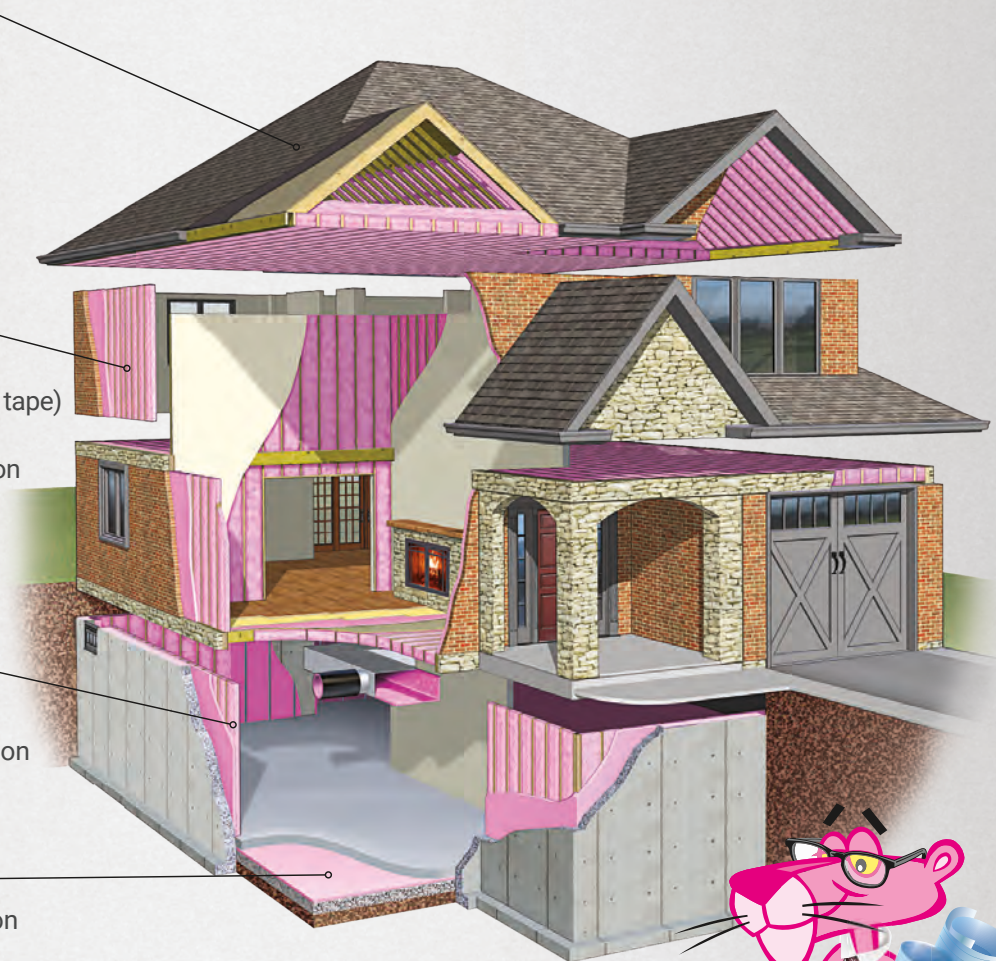
- FOAMULAR® CodeBord® XPS insulating sheathing and taped joints (JointSealR™ tape)
- FlashSealR® flashing tape
- EcoTouch® PINK® FIBERGLAS® Insulation (R-20/22/24)

High Performance Basement Insulation and Moisture Management System

- FOAMULAR® CodeBord®
- EcoTouch® PINK® FIBERGLAS® Insulation

High Performance Basement Slab System

- FOAMULAR® CodeBord® XPS Insulation with taped joints (JointSealR™ tape)



ComfortSHIELD®, Owens Corning's
High Performance Complete Building Enclosure
System for high performance envelopes.

Learn more at www.owenscorning.ca
or call us at 1-800-GET-PINK®



73 | PINK® FIBERGLAS® Insulation

20 | FOAMULAR® XPS Insulation



OWENS CORNING

www.owenscorning.ca

With 2030 still a decade away, and current building codes still falling well below the Net-Zero target for new construction, it might appear that contractors have little incentive to build past the current code. But given the range of innovative exterior insulation products available right now, making the building envelope Net-Zero ready is imminently doable.

“We know we have a line in the sand in 2030, but trying to get there by sealing and insulating from the inside and between the studs is not going to get us there; you have to go outside,” says Salvatore Ciarlo, Architectural Solutions and Technical Services Manager for leading insulation manufacturer Owens Corning.


Owens Corning markets a number of extruded polystyrene (EPS) board insulation products for exterior use in both residential and commercial applications. The company’s Foamular C-200 and CodeBord products both deliver R-5 per nominal inch and are available in thicknesses from one to four inches. This EPS board insulation

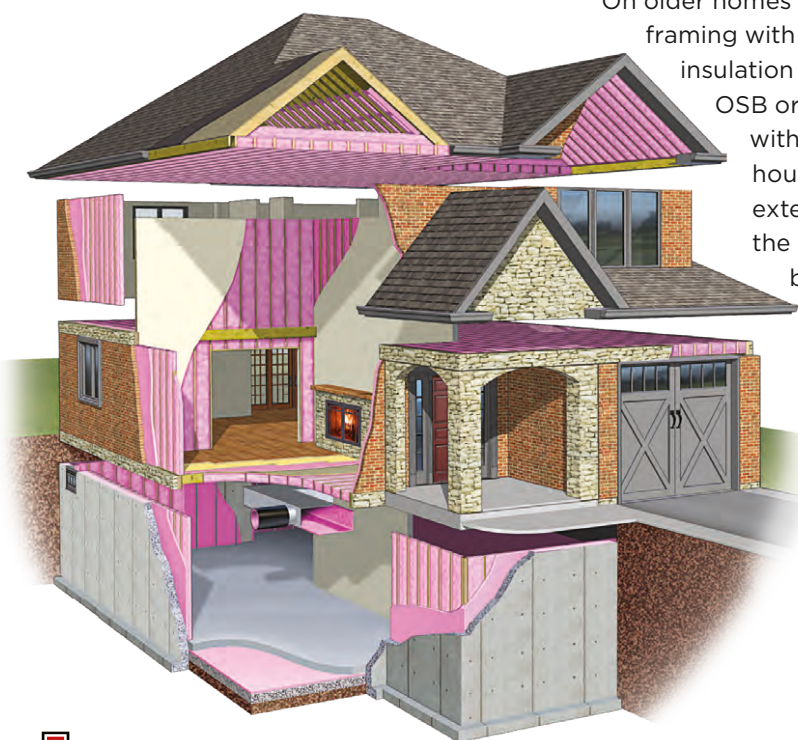


is light and easy to cut and install and is highly moisture resistant.

“On older homes you would see 2x6 framing with maybe R-12 batt insulation in-between and OSB or fiberboard outside with some kind of house wrap under the exterior cladding, so the finished wall might be R-14 or R-15; well, we are going to need to double that, at least, to meet 2030 code requirements,” Ciarlo explains.

“Our perfect high-performance exterior wall would include R-24 batt insulation between the studs and two inches of rigid EPS foam board on the outside. So you have your air and moisture barrier and are approaching R-40, which is well above the current code requirements.

“The key is the products exist to build a 2030 envelope today, so why wait? It actually doesn’t make sense to build a structure optimized for the current code that will be obsolete in five years: the structure will underperform in terms of energy efficiency, it will hurt the resale value, and you are future-proofing it against extreme weather and the high cost of upgrading it down the road.” 



Owens Corning’s Foamular C-200 and CodeBord products both deliver R-5 per nominal inch and are available in thicknesses from one to four inches.



NORDIC

THE STRONG AND RELIABLE TYPE

ENGINEERED WOOD PRODUCTS

A FULL RANGE OF I-JOISTS FOR RESIDENTIAL AND LIGHT-COMMERCIAL USE

NORDIC
STRUCTURES

nordic.ca
1 866 817-3418

XLOCK

AVAILABLE AT

S SLEGG
BUILDING MATERIALS

APRIL 2020

CUT DOWNTIME WITH JUST ONE CLICK

WORLD'S FIRST QUICK-CHANGE ANGLE GRINDER



QUICK-CHANGE

Minimizes downtime between wheel changes with zero losable parts.



BACKWARDS COMPATIBLE

Most Bosch X-LOCK wheels are backwards compatible with standard 7/8 In. mounts.



TOOL-FREE SYSTEM

Single lever wheel ejection without need of a spanner wrench.



ERGONOMIC DESIGN

Robust for metal and concrete with combined with Bosch-proven ergonomic design (GWX10-45 series only).

UP TO
5X FASTER
VS. STANDARD 7/8 IN. MOUNT



JUST ONE CLICK!



X-LOCK ACCESSORIES



BOSCH

MUTUAL SUPPORT



Slegg Building Materials has formed a mutually beneficial partnership with the Vancouver Island contractor community

NETWORK



If there is one thing that every business in the world can't live without, it's steady customers;

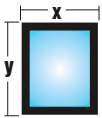
that requirement holds true whether the business is a huge multi-national or a local mom-and-pop shop. Of course, it is also true that a business needs to keep adding new customers if it wants to grow and become more profitable. Truly, it is the steady customers, the ones who keep coming back again and again, that provide a stable foundation for the business to grow on.

In fact, it is fair to say that you can judge the quality of any business by the number of "regulars" it serves. Repeat customers are an indication that a business provides quality products, a high standard of service and value for money. Over the course of more than seven decades, Slegg Building Materials has built its business around the concept of developing repeat customers; that's why Slegg is so focused on meeting the needs of the contractor community on Vancouver Island.

Slegg's commitment to its most loyal customers has allowed it to form great partnerships with many successful companies over the years. *Island Builder* would like to take this opportunity to acknowledge just a few.



WIDEST SELECTION OF BC MADE SKYLIGHTS



Largest selection of standard sizes with unlimited custom capability

Our large selection of standard sizes allows you to install the right sized skylight for your application. If required, we have custom sizes available for all glass and acrylic dome models, fixed and venting – manual and electric.



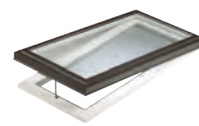
Widest choice of standard frame colours, plus custom color matching

Why limit yourself to one frame colour? Your skylight should blend in with your roof, not stand out. Choose from 7 standard frame colours we offer, or we can help colour match anything under the sky.



The widest selection of Energy Star® certified clear and tinted options

With the introduction of the new 2020 Canadian Energy Star® requirements, only triple glazed skylights will qualify for Energy Star® certification. Columbia leads the Canadian skylight industry with the most complete Energy Star® offering in triple glazed LoE³-366 - available in all sizes, fixed or venting, standard or custom.



Venting Curb Mount



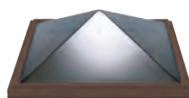
Roof Access Hatch



Wood Deck Mount



Fixed Curb Mount



Acrylic Pyramid



Circular Roof Dome



Flex Sun Tube



Rigid Sun Tube

PHILCO CONSTRUCTION



PHILCO CONSTRUCTION

Partners Philip Wilson and Glen Hamilton of Victoria-based Philco Construction share common roots. First, both grew up on Salt Spring Island. Second, they were both born into contracting families and they have been hanging around construction jobsites since childhood.

"We learned the business from our parents first-hand, so you could say we grew up in the industry," says Wilson. "We don't wear tool belts now, but we are on site every day and we can chip in if needed."

The pair partnered-up seven years ago and moved to Victoria to form Philco, a company specializing in high-end custom homes. Today, their company



employs upwards of 30 people, depending on workload, and often manages several million-dollar projects at a time.

"These custom homes can be 4,000 to 6,000 sq. ft., and we have done some with elevators and waterfalls," Wilson explains. "We won an award for

a project we did that was built on pilings on a cliff that plunged 40 meters down to the ocean; if the project is difficult, we like it.

"Victoria is a small market and word of mouth is still the best marketing tool; if you develop a reputation for doing what you say, you will stay busy."

PARADISE HOMES

After 24 years developing homes in and around Victoria, Westshore and Langford, partners Rod Leclaire and Gary Brown of Paradise Homes have had a front-row seat for all the changes in the area.

“The volume of new development has been incredible,” says Leclaire. “There are so many people moving here that it’s getting hard to keep up with the demand for housing. The sky’s the limit for the building industry.”

Paradise Homes is well-positioned to take advantage of this growth. The company specializes in developing spec single-family homes, townhomes and condos, primarily for the first-time buyer and mid-range markets. Focusing on these segments has allowed Paradise to make a significant contribution to development in the region over the years.

“We start with a clean slate with maybe an acre of land and try to convert it to a better future use,” Leclaire explains. “We collaborate with architects and the local municipality to come up with a development that works for everyone.”

Paradise has about 10 full-time staff in the field at any time depending on projects, and all the hands-on construction work is subbed out to local trades. “We have been around so long now that everyone knows us; we have earned the respect of the trades and municipal staff everywhere we work.”

MILNE ROOFING

Brian Milne of Nanaimo-based Milne Roofing got into the roofing business quite by accident. Back in the late 1980s, when Milne was in his early 20s, he was offered a chance to help out a friend in the business on a roofing job. He worked out so well that the friend asked him to come back on the next job, and before he knew it, he was learning the roofing trade. In 1994, he decided to strike out on his own.

“When I started my own business it was just me and maybe a couple of

PARADISE HOMES



helpers,” Milne recalls. “My wife Stacey, who runs the business with me, would even come up on the roof sometimes to lend a hand.”

Today, Milne Roofing is active in the residential and commercial roofing business on Vancouver Island as far north as Duncan and also on the mainland. Depending on the workload at any given time, the company has about 35 employees working on new-build and

repair projects on single-family homes, townhouses, apartment buildings and commercial structures. Milne handles all types of jobs, including traditional shingles, roof tiles, metal and torch-on flat roofs.

“Our business has kind of grown with the area,” says Milne. “In fact, Nanaimo has probably doubled in size since we started.”





UP YOUR CUTTING GAME!

Diablo's premium brand of cutting tools and abrasives are specifically designed for the contractor and remodeler to provide superior performance while withstanding the most extreme conditions.

Diablo products are manufactured in the world's most technology-advanced facilities to consistently provide high-quality results every time; saving you time and money.

Diablo specializes in circular saw blades, reciprocating blades, hole saws, sand paper, bonded abrasives, router bits and forstner bits... so no matter what job or results you need, Diablo has a specialized solution that is guaranteed to give you the best performance.

- Diablo produces its own carbide so we are able to create solutions designed for specific applications to maximize your blade's cutting life
- Diablo creates innovative product designs catered to your cutting application for highest quality finish and longest cutting life
- Manufactured in the most sophisticated and technologically-advanced facilities to provide you with the latest innovation in Diablo products

Maximize your productivity by taking advantage of the latest cutting tool & abrasive innovations from Diablo.



www.DiabloTools.com

You work in winter So does a Bissett.

Designed and tested to work like you—year-round, in the toughest conditions. Best in class performance and durability plus a 6 year warranty ensures you can depend on your Bissett as much as the project depends on you.

bissettfasteners.ca



BISSETT™
DRIVEN BY PROFESSIONALS

GORDON N' GORDON INTERIORS



GORDON N' GORDON INTERIORS

Founded in 1986, family-owned and operated Gordon N' Gordon Interiors of Victoria is now well into its second generation of management. The company specializes in stud framing, drywall, insulation and acoustic ceilings.

"The company started out with my dad and his brother taping houses," says co-owner Jim Gordon. "I was sort of born into it; I started learning how to install steel stud framing when I was in

grade 8 and I worked on the tools for years before I moved into management. My dad still looks after our development properties."

Gordon N' Gordon is generally brought in as a sub-contractor on major development projects. These include multi-family housing developments, high-rises, senior care facilities, commercial structures like car dealerships and institutional buildings like schools. With offices in Victoria and the Okanagan, the company has had as

many as 30 projects on the go at once, some lasting as long as two years.

"There is so much work that one of the biggest challenges is finding skilled labour, especially on the Island," Gordon says. "That's why we are heavily involved in apprentice training, because we have to replace the guys who are retiring. If you can find kids who are interested, there is lots of money to be made."

LANSON'S DRYWALL SYSTEMS

Now in its twentieth year of operation, Nanaimo-based Lanson's Drywall Systems has come a long way from humble beginnings. Guy Landry started the company doing small residential renovation jobs with just three employees. The company began expanding its operations several years later, adding a steel stud division and insulation to its portfolio.

"Today, we handle large-scale developments; the bulk of our work is commercial, with about 30% residential," explains Landry, who runs the company now with co-owner Kris Staines. "Right now, things are so busy on the commercial side we have enough work on the table to last well into 2021, and residential work always filters in. We never turn work away; we are always there for our regular builder clients."

Landry and Staines learned the drywall business early on, both working after school and on weekends as teenagers for their respective family businesses. Today, the company's range extends throughout Vancouver Island, "as far north as Port Hardy," and the company continues to expand: in July 2017, Lanson's purchased a similar operation based in Vancouver, and just last May the company added a spray foam insulation division. "We are probably one of the largest sole purchasers of drywall in B.C. now, and province-wide we are about 200 employees strong."



UNRIVALED STYLE AND PERFORMANCE FOR ONE-OF-A-KIND OUTDOOR LIVING SPACES

WE HAVE 2020 VISION – CHECK OUT OUR NEWEST INNOVATIONS

- Impression Rail Express aluminum railing - an easy to install, panelized system
- Vintage and Harvest MAX boards (1.5" thick) – installs 24" on center making it perfect for docks and boardwalks
- Multi-Width Decking including narrow (3.5"), standard (5.5"), and wide (7.25") width boards from the Vintage and Harvest collections – Do Decking Differently™
- Classic Composite Series railing with a Drink Rail option



#1 IN PREMIUM DECKING WITH THE BEST WARRANTIES IN THE INDUSTRY



CAPPED POLYMER DECKING offers the most advanced material technology in the cap and core making it impervious to moisture damage and 40% more slip resistant than competitors.



4-SIDED CAPPED COMPOSITE DECKING is made from up to 80% recycled material and offers exceptional protection against moisture damage with Mold Guard™ Technology in the cap.



DAVID COULSON DESIGN

Now celebrating its thirtieth year in business, Duncan-based David Coulson Design has developed a reputation for custom design and renovation work of the very highest quality. The company's dedication to perfection stems directly from founder David Coulson, who honed his craft working on heritage buildings and Hollywood movie sets.

"I apprenticed with my father, who was a Danish master builder, then I spent 10 years in the B.C. Interior working on the historic Wells Hotel and in Bakerville refurbishing hotels, museums and other period display buildings," Coulson recalls. "In 1986, I moved to Victoria and I found my museum-level skills and experience really translated well to custom home building."

Today, David Coulson Design employs a staff of 30 working on contemporary custom homes and renovations, heritage restorations (including the Emily Carr museum) and unique commercial renovations. The company offers a range of services, including planning, costing, project management and construction.

The company is also known for its dedication to environmental construction. All David Coulson projects are designed to be as energy efficient as possible and incorporate recycled and low-impact materials and zero-VOC paints and finishes. "We always tip our hat to heritage design in terms of quality, but our style signature stretches that and gives it a contemporary edge."

CUSTOM PRO EXTERIORS

The exterior of any home or commercial building has to play a double role: it has to protect the structure against cold, heat, severe weather and, at the same time, it has to look good. Victoria-based Custom Pro Exteriors has been installing durable and attractive building exteriors throughout Vancouver Island since 1980.

"We basically handle anything that has to do with the building envelope," explains co-owner Ryan Craycroft.

DAVID COULSON DESIGN



"My dad started the business 40 years ago as a custom cedar siding installer, but the company has evolved a lot over the years."

Today, Custom Pro Exteriors installs a wide range of cladding products for residential, commercial and industrial projects. In addition, the company also installs soffits, gutters and downpipes, and its in-house scaffold division provides assembly, dismantling and rental services. Custom Pro also specializes in window installation. "We have anywhere from 120 to 140 employees working on multiple projects at any given time."

Last year, Custom Pro Exteriors merged with another regional exterior contractor, H&R Exteriors of Langford. In business for over 20 years itself, H&R specializes in lath, stucco, Exterior Insulation Finish Systems (EIFS), rain screen systems and wood/cement (Hardie) cladding.

"We have worked side-by-side with H&R for years, so it was a good fit for both companies," Craycroft says. "Adding their stucco expertise has allowed us to expand what we can deliver for clients." 



NEW

Milwaukee



**EQUIPMENT REDEFINED
TRADE FOCUSED
SYSTEM WIDE**



AVAILABLE AT

S SLEGG
BUILDING MATERIALS

The MX FUEL™ Equipment System revolutionizes the light equipment market by delivering the performance, run-time, and durability demanded by the trades without the hazards associated with emissions, noise, vibration, and the frustrations of gas maintenance. This completely compatible system goes beyond the limitations of gasoline and power-cord units, utilizing the industry's most advanced batteries, motors, and electronics to deliver a best-in-class experience for users.



REDLITHIUM

**ALL MX FUEL™ BATTERIES FIT
ALL MX FUEL™ EQUIPMENT**



DAK DECK  DAK SIDING  DAK TRIM

DAKERYN

DAK TRIM TREATED

25 YEAR
LIMITED
WARRANTY
MADE IN CANADA



www.dakeryn.com

233 W 1st St #210, North Vancouver **Phone** 604.986.0323 **Fax** 604.986.3464



OUTSTANDING TOOLS. OUTSTANDING SERVICE. OUTSTANDING RESULTS.

Tools and service for professionals.
Brought to you by professionals.



Slegg
Building Materials
now rents Hilti
tools!



As your authorized Hilti distributor, Slegg Building Materials offers a wide range of Hilti tools and consumables for sale and a full line available for rent — backed up by the Hilti service and support you need to get the job done right.

Need fast repair service or expert support for your Hilti products? Call or drop by today! As an authorized Hilti repair drop-off depot, Slegg Building Materials can help you get back up and running in almost no time.



"Slegg Night of Mayhem" demolition derby at Western Speedway in Victoria

Lending a Hand

At Slegg, getting involved with local community events and charities is just part of being a local business

Slegg Building Materials occupies a unique place among Vancouver Island businesses.

First, Slegg is exclusive to the island, with nine locations serving various regions from Victoria north to Comox and Tofino. And because the company has been in business for more than 70 years, it has become a household name for generations of islanders. More than just a business, Slegg is truly a member of the Vancouver Island community, and that's a responsibility the company and its employees take very seriously.

“Vancouver Island is like one big, tight-knit community,” says Jason Balderston, General Manager of Slegg’s Sidney location and the company’s Marketing Manager. “We have always felt like we have an obligation to give back to the communities where we operate, so we like to do all we can to support local charities and activities.”

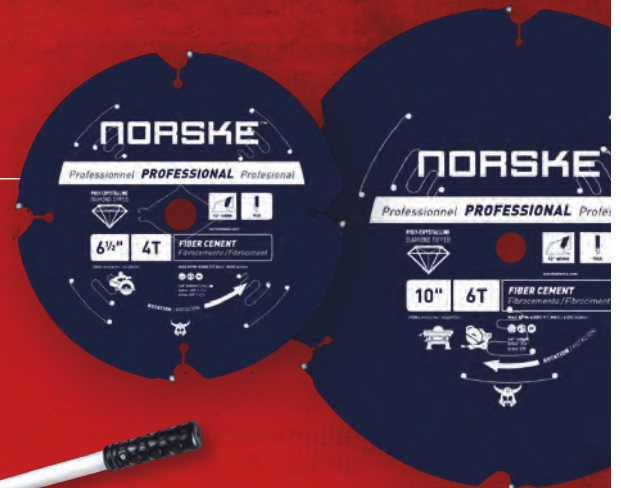
Naturally, being a good corporate citizen goes hand-in-hand with running a good business, but Slegg’s commitment to the communities it serves goes much deeper than that. In fact, the combination of Slegg’s history and the unique Vancouver Island marketplace fosters a different kind of motivation for community involvement for the



Any person who grew up on Vancouver Island playing minor hockey, baseball, lacrosse or soccer very likely had Slegg as their team sponsor.

NORSKE™

POWER. PRECISION. PERFORMANCE.



www.norsketools.com

LEGENDARY PERFORMANCE™





Slegg's involvement in the community ranges from charitable donations to sponsorships and events.

company and its employees. At Slegg, community involvement is personal.

Slegg's involvement in the community comes in several forms, from charitable donations to sponsorships and running full-scale events. For example, one charity that has always been a focus for the company is the Canadian Cancer Society. With each cash or debit card purchase made at Slegg, the company donates one percent of the proceeds to the Cancer Society. Says Balderston: "At the end of the year, we always top up the contribution to reach at least \$75,000 annually, and we have topped \$100,000 several times."

In addition to the company's financial donations, Slegg employees also

volunteer hundreds of hours raising additional funds for the Cancer Society through store barbeques, pancake breakfasts, golf tournaments and special events. One of Slegg's major annual fundraising events is the Telus Motorcycle Ride for Dad in June. Each Father's Day hundreds of motorcycle riders come together for a barbeque in the parking lot of Slegg's Cumberland location before taking off for a mass round-the-island ride.

Many of Slegg's charitable fundraising events are much smaller and community specific, meaning they are organized out of a specific Slegg location and focus on meeting an immediate local need. For example, Slegg's Nanaimo store has run

CUSTOM — Your Single Source from the Tile and Stone Installation Leader.



We offer a complete line of installation products for surface preparation, tile set, grout and maintenance. All of our products are formulated to work together and provide durability and high performance.



Look for the lifetime warranty icon on qualifying products so your tile project is covered for life.

For more information, visit our website
CustomBuildingProducts.com



CUSTOM®
TILE INSTALLATION SYSTEMS

a golf tournament for the last 10 years that brings employees and contractors together to raise funds for a local school lunch program.

“Individual stores also often hold events to help local families dealing with a crisis,” Balderston adds. “For instance, stores held events to help families affected by the forest fires in the interior last year.”

Of course, Slegg has always been very involved as a sponsor of community sport. Any person who grew up on Vancouver Island playing minor hockey, baseball, lacrosse or soccer, or has a child active in one or more of those sports, has very likely had Slegg as their team sponsor. The company is also very active in sponsoring teams at the elite amateur and professional levels, throwing its



Many of Slegg’s charitable events are held at a specific Slegg location and focus on an immediate local need.



fiberon®

Beautiful outdoor living built for life.®

- Capped composites capture the warmth and beauty of natural hardwoods.
- Industry-leading warranties, including extended warranty terms of up to 50 years for our premium products.
- Fiberon decking contains recycled plastics and lumber mill scraps.
- Made in the USA.

Earn 10% back – ask about our First Time User Rebate.


fiberondecking.com | 1.800.573.8841



The company is very active in sponsoring elite amateur and professional sports teams.

support behind the Victoria Shamrocks and Nanaimo Timbermen lacrosse teams; the Victoria Grizzlies, Nanaimo Clippers and Saanich Braves junior hockey teams; and the Victoria Harbourcats summer collegiate baseball team.

Aside from local arenas and playing fields, it's also not uncommon to see Slegg's logo prominently displayed at more unusual community events. These include various dragon boat festivals up and down the coast during the summer, and at the "Slegg Night of Mayhem" demolition derby at Western Speedway in Victoria. The company is also the title sponsor of the "Rock for a Reason" benefit concert held each summer to raise money for BC Cancer.

"The great thing is we never have any trouble getting Slegg employees to volunteer to help out at our charitable events, and many take part," Balderston explains. "It's a great way to build our team and build the community at the same time." 

WORK WITH WEYERHAEUSER, THE INDUSTRY LEADER

**50
YEAR**
LIMITED WARRANTY

**200
DAY**
NO-SAND GUARANTEE

Weyerhaeuser engineers over 100 years of forest product knowledge into each Edge Gold® OSB subfloor panels. Thanks to our dedication to enhancements in strand technology and our proprietary edge seal, our panels withstand the elements so well they can extend the building season for framers. In addition, our easy fit tongue-and-groove edge allows for hassle-free installations.

Weyerhaeuser Edge Gold panels are backed by a 50-year warranty against delamination, and a 200-day "no sand" guarantee...they install flat, stay flat and look great for customer walkthroughs.

Weyerhaeuser™
EDGE GOLD

WEYERHAEUSER.COM/OSB | 1.888.453.8358

 **Weyerhaeuser**



VictoriaTruss

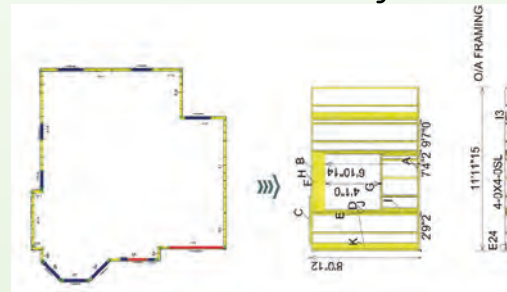
Serving Victoria and Vancouver Island for over 35 years

Wall Panel Components Pre Fab wall Systems

Effectively reduce costs associated with labour, time and site waste. Saving you time, material and money! They provide builders with a chance to gain a competitive edge, higher profit margins and fast cycle times for construction.

Real savings

On-site labour required: 20 – 25%
Building construction schedule (framing stage) : 35%
Onsite materials theft (of wall materials) : 100%
Framing refuse : 75%



OF COURSE CALL US ANYTIME FOR ALL YOUR ROOF TRUSS NEEDS

Langford Office
Ph 250.388.9975
Fx 250.388.4215
ian@victoriatrussltd.ca
gary@victoriatrussltd.ca

Cobble Hill Office
Ph 250.743.9922
Fx 250.743.9024
brent@victoriatrussltd.ca

Courtenay Office
Ph 250.703. 2868
Fx 250.703.2875
chris@victoriatrussltd.ca

Familiar Faces



Slegg's contractor customers know they will get the help they need from people who know their business

Anyone who has shopped in a large chain home improvement store knows what less-than-excellent service looks like.

Sales associates tend to be few and far between, and even when you can find one they are often short on experience and product knowledge. Luckily Slegg Building Materials prides itself on providing customers with a very different experience.

One key reason customers keep coming back to Slegg, for decades in some cases, is the experienced staff. Customers who drop in regularly at certain locations can

product categories. Contractor customers also know they can count on having a chat and a few laughs with people they have dealt with for years.

“It’s a definite advantage having a background in construction when I’m dealing with contractor customers.”

—Terry Barton, Outside Contractor Sales, Admirals Road

count on dealing with Slegg employees they know and trust, building materials specialists who have spent years developing their knowledge in a range of

As we have done in previous issues of *Island Builder*, we’d like to introduce you to just a few of Slegg’s longest-serving employees.

Terry Barton

OUTSIDE CONTRACTOR SALES

Admirals Road

Terry Barton has a desk at Slegg’s Admirals Road location, but he doesn’t spend a whole lot of time sitting at it. Now an eight-year contractor sales veteran, Barton spends most of his day out on jobsites.

“I’m usually in the store about 6:00 a.m. to help the contractors who come in early get in and out quickly,” says Barton. “After that, I like to head out to jobsites to see if any of our regular customers need anything, or just to drop off some donuts and coffee, or water on a hot day.”

Barton should feel comfortable on construction sites: before joining



Terry Barton

Slegg he spent 33 years in the industry working as a licensed carpenter and project manager. “It’s a definite advantage having a background in construction when I’m dealing with contractor customers; I understand their needs and they value my opinion when they have an issue.”

Originally from Port Perry, Ontario, Barton first headed west in 1979 for the Alberta oil boom and eventually moved on to his wife’s native Vancouver Island. Since arriving in Victoria in 2002, his work in the construction industry has placed him at the centre of incredible changes to the city.

“The last seven years has really seen a steady boom, and there is still lots of room for growth,” Barton says. “It’s



Yvonne Mostad



HERITAGE SERIES®

Masonite’s Heritage® Series interior doors combine the classic lines of wood Shaker doors with the durability of molded panel engineering.



LINCOLN PARK, LOGAN, WINSLOW.

masonite.com



funny — when I left the jobsite and went into contractor sales I thought I would coast to retirement; now I'm twice as busy as before and I love it!"

Yvonne Mostad CONTRACTOR DESK

Admirals Road

Regardless of what you may be shopping for, your comfort level always goes up when you see a familiar face when you enter the store. For customers who frequent Slegg's Admirals Road store, that familiar face behind the contractor counter is usually Yvonne Mostad.

Since joining the company 14 years ago, Mostad has been focused exclusively on contractor sales.

That means she is generally the main point of contact for contractors who have questions in the store, as well as

"Over the years I've been able to develop expertise in many product categories — anything to do with

"I have gotten to know a lot of contractor customers; they come to me because they know I can quickly figure out what they need and what it's going to cost."

—Yvonne Mostad, Contractor Desk, Admirals Road

for outside sales associates who may call in from a jobsite to check on product inventory or to get a quote.

exterior walls, floor systems, engineered wood products, and I picked up masonry a few years ago," Mostad explains.

Good fences make good neighbours!

Largest selection of highest quality fence panels on Vancouver Island.

AQUILA CEDAR PRODUCTS LTD.

Vancouver Island owned and operated

1282 Alberni Hwy, Parksville, BC V9P 2C9 (250) 248-5922 • AquilaCedar.com

"I have gotten to know a lot of contractor customers; they come to me because they know I can quickly figure out what they need and what it's going to cost."

Another specialty category for Mostad is siding, specifically the Hardie fiber cement line and EasyTrim wall systems. "The EasyTrim system has a lot of components and goes with siding panels; I got involved right away when that system was introduced, so I can really help contractors who have questions about it."

When she's not working the contractor desk, Yvonne is an enthusiastic member of Slegg's dragon boat team — "Last year we competed in the corporate division at the Victoria dragon boat festival and we took the gold against BC Transit in the final."

Dave Van Den Bulk

CONTRACTOR SALES

Sidney

Dave Van Den Bulk jokes that he may be genetically engineered to work at Slegg Building Materials. He may have a point: his mother began working for Slegg as a cashier back in the 1970s, and his father had two stints at the company before

retiring from Slegg recently. It was those family connections that got the Sidney local started at Slegg as a teenager.

"I actually started helping out in the yard after school when I was just 13," Van Den Bulk recalls. "I worked at Slegg all through high school then left to travel. I came back full-time when I was 22 and I've been here ever since — 22 years now."

"I worked at Slegg all through high school then left to travel. I came back full-time when I was 22 and I've been here ever since."

—Dave Van Den Bulk, Contractor Sales, Sidney

Dave Van Den Bulk



In addition to working in the yard preparing orders, Van Den Bulk has at times helped out with contractor sales, employee training and, thanks to his crane operator qualifications, bulk deliveries.

“There’s an ongoing joke about what my job actually is here,” he says. “I do lots of different things; I’ve tended to inherit jobs and never lose them.”

Van Den Bulk’s flexible hours at Slegg also allowed him to pursue a longtime passion—lacrosse. Over the course of a 10-year career playing at the top level for Victoria and Nanaimo, Van Den Bulk competed for all of Canada’s top lacrosse honours, including the Minto Cup (Junior National Championships), President’s Cup (Senior B National



Hoa Vu



Tradition without Compromise.

Crafted for homeowners who value their time and love their homes, **TandoStone** and **Beach House Shake** are low maintenance, high performance products that require little to no upkeep.

tandobp.com | beachhousesshake.com



Creek LedgeStone - Nordic Mist



Beach House Shake - Sandcastle



AFA FOREST PRODUCTS | LANGLEY
19822 101 Ave, Langley, BC
(604) 513-4850
afaforest.com



Tando



TandoStone
#1 Brand of Composite Stone

Beach House Shake
Beautiful Freedom

Championship), and the Mann Cup (Senior A National Championship).

Hoa Vu

INSIDE CONTRACTOR SALES

Langford

When it comes to distance travelled to end up as a Slegg employee, Hoa Vu likely has most of his co-workers beat. Vu came to Canada from his birthplace, Vietnam more than 30 years ago, but it wasn't to Vancouver Island and it wasn't to work in the construction or building supply industry.

"My first job in Canada was in a restaurant in Niagara Falls, Ontario," recalls Vu. "It was all I could really do then because I needed to learn English."

Seven years into his career in the restaurant business, fate took a turn for Vu. At a gathering of friends, he met a fellow Vietnamese immigrant who was in Niagara Falls visiting her

home. An engagement quickly followed, but there was one snag.

"Mr. Slegg said I would have to move out to Vancouver Island to get married because he didn't want my fiancé to

"I just kept on learning and now I get to use my knowledge to help customers; it's very rewarding."

—Hoa Vu, Inside Contractor Sales, Langford

sister. It just so happened that the woman lived on Vancouver Island where she worked in the Slegg family

leave," Vu laughs. "It was a good deal for me, because he offered me an opportunity."



LUX Architectural Panels

Bold, Timeless and Durable metal cladding industry-leading panels that provide innovative design solutions for contemporary architectural projects.



AFA FOREST PRODUCTS | LANGLEY
19822 101 Ave, Langley, BC
(604) 513-4850
aforest.com



From his first day 26 years ago, Vu says his job at Slegg has been a constant

to use my knowledge to help customers; it's very rewarding."

"I work with contractors and multi-family builders and help them figure out the best options when it comes to doors."

—Grant Reid, Door Sales

learning experience. "I didn't know anything at first, so I started out helping in the warehouse. Then they needed someone in paint, so I had to learn all about paint, then about plumbing. I just kept on learning and now I get

Grant Reid DOOR SALES

Any contractor or builder who buys doors on Vancouver Island has probably dealt with Grant Reid at some point. Reid has been with Slegg since 2000,

but he has been focused exclusively on door sales since 2016.

"I work with contractors and multi-family builders to help them figure out the best options when it comes to doors," Reid explains. "Certain clients also spec their doors to me; contractors and builders are our bread and butter in the Door Shop for sure."

The Slegg Door Shop specializes in manufacturing pre-hung doors, taking raw door slabs from manufacturers and cutting them to fit client specifications. Reid says the shop has the capacity to produce 150 finished doors per day, both for external customer orders and to stock Slegg's retail branches.

"We also have the ability to do small custom jobs for contractors who require

Fusion Stone is the Easy, Patented, Mechanically Fastened Stone Veneer System



Learn more
fusionstone.ca

Fusion Stone is an easy and budget-friendly way to beautifully upgrade your home, inside and out. Available in three distinct textures, all backed by a lifetime guarantee.

- Home Exterior
- BBQ's & Fire Pits
- Columns & Pillars
- Garden Sheds
- Deck Surrounds
- Planter Boxes




CanWel®

We Can Help with Your Next Project

Discover why CanWel is Canada's leading distributor of building materials, visit canwel.com

non-standard sizes,” Reid points out. “We just completed a job for a custom home that had some nine-foot doors spec’d by the architect; it’s not always easy, but we can do it.”

Reid says he spends about 40% of his time out on jobsites, confirming measurements, monitoring installations and interacting with clients. “That’s probably the best part of my job: I like the diversity and dealing with customers on a personal level, maybe go to lunch, a supplier tour or even a baseball game now and then.”

When he’s not thinking of doors, Reid, originally hailing from Kitimat, loves to roam around the coast on his 32-foot cabin cruiser. “I love it here; I can’t think of anywhere that compares.” 



Grant Reid

Create Exceptional Outdoor Living Spaces with Fast Driving, Code Approved ÜberGrade Fasteners from GRK™



Learn more

grkfasteners.com

FASTER INSTALLATIONS- no pre-drilling. Innovative, patented features are specially designed to reduce torque and bite instantly for effortless fastening.

NO STRIPPING, NO SPLITTING, NO HEAD POPS- no wasted time on the job site. High tensile, torque and shear strength allow for immense drawing power out performing most other competitive fasteners.

BUILDING CODE APPROVED- for structural use in treated lumber. All GRK screws have been evaluated for structural and AC257 corrosion resistance to be in compliance with IBC/IRC specifications. That’s why all our fasteners come with a limited lifetime warranty, so you can rest assured your installations will withstand the test of time.



CanWel®

We Can Help with Your Next Project

Discover why CanWel is Canada’s leading distributor of building materials, visit canwel.com

COMPANY	WEBSITE	PAGE
3M	www.3M.com	26
Abbotsford Concrete Products	www.pavingstones.com	47
AFA Forest Products	www.afaforest.com	92, 93
Alexandria Moulding	www.alexandriamoulding.com	19
Alliance Door Products	www.AllianceDoorProducts.com	25
All Weather Windows	www.allweatherwindows.com	27
Aquila Cedar Products	www.aquilacedar.com	90
Bailey Metal Products	www.bmp-group.com	55
Basalite Concrete Products	www.basalite.ca	48, 49
Belgard	www.belgard.com	51
Bissett Fasteners	www.bissettfasteners.ca	74
Bosch	www.boschtools.com	67
Builder's Choice Shower Door	www.bcshowerdoor.com	21
CGC Inc.	www.cgcinc.com	2, 99
Columbia Skylights	www.columbiaskylights.com	70
Core Acoustics	www.coreacoustics.ca	45
Custom Building Products	www.custombuildingproducts.com	83
Dakeryn	www.dakeryn.com	79
DEWALT	www.dewalt.ca	8
Diablo Tools	www.diablotools.com	73
Euro-Rite	www.eurorite.com	18
Fiberon	www.fiberondecking.com	84
Fusion Stone	www.fusionstone.ca	94
GRK Fasteners	www.grkfasteners.com	95
Halo	www.buildwithhalo.com	63
Hilti	www.hilti.ca	80
Imperial Building Products	www.imperialbp.ca	97
InStone	www.instoneproducts.ca	29
James Hardie	www.jameshardie.com	36
Johns Manville	www.JM.com/Canada	37
Kaycan	www.kaycan.com	11

COMPANY	WEBSITE	PAGE
Lynden Door	www.LyndenDoor.com	25
Makita	www.makita.ca	42
Malarkey	www.malarkeyroofing.com	34
Masonite	www.masonite.ca	16, 89
Metrie	www.metrie.com	31
MicroPro Sienna	www.MicroProSienna.com	12
Milgard	www.milgard.ca	6, 7
Milwaukee	www.milwaukeeetool.ca	78
Nordic Structures	www.nordic.ca	66
Norske	www.norskertools.com	82
Plasti-Fab	www.plastifab.com	56
PowerHouse Building Solutions	www.powerhousebuildingsolutions.com	60
PPG	www.ppg.com	22
QuietRock	www.QuietRock.com	40
Regal Ideas	www.regalideas.com	57
Resisto	www.resisto.ca	58
Rockwool	www.rockwool.com	35
Rymar	www.rymar.ca	52
Slegg Door Shop	www.slegg.com	100
SONOPAN	www.sonopan.com	43
Still Creek Forest Products	www.realcedar.com	10
Owens Corning	www.owenscorning.ca	S8, 64
Taiga	www.taigabuilding.com	13
Taymor	www.taymor.com	32
TimberTech AZEK	www.timbertech.com	76
Trimlite	www.trimlite.com	28
Victoria Truss	www.victoriatrussltd.ca	86
Weiser	www.weiserlock.com	30
Westform Metals	www.westform.com	54
Weyerhaeuser	www.weyerhaeuser.com/osb	85

Engineered Lightweight Steel Framing Solutions



The most
innovative
framing
system of the
21st century

- Unmatched thermal performance with superior STC ratings
- 15-40% lighter than conventional framing with greater span capability
- Open web design provides maximum flexibility for service installation



SteelForm Building Products Canada and Fusion Building Products have merged into a new company called Imperial Building Products (IBP) a subsidiary of Imperial Manufacturing Group (IMG).

Vancouver

#200, 3168 – 262 Street
Aldergrove, BC V4W 2Z6
(604) 381-3981

Edmonton

4104-69 Avenue
Edmonton, AB T6B 2V2
(780) 440-4499

Toronto

60 Enterprise Road
Rexdale, ON M9W 1C9
(416) 245-7006



www.imperialbp.ca

IN THE CONNECTIONS BUSINESS



Steve Conroy
DIRECTOR OF MERCHANDISING
Slegg Building Materials

☎ 250.478.5509

✉ S.Conroy@slegg.com

“We connect our customers with the products and materials they need to succeed.”

Time really does fly when you're having fun—and selling building materials. It is hard to believe that this marks the fourth edition of Slegg's *Island Builder* magazine. We launched this publication back in the spring of 2018 as a vehicle to help us better connect with the Vancouver Island contractor community and help to bring them closer to Slegg, our products and our vendors. Now, two years into the project, we believe those connections are stronger than ever, and *Island Builder* has helped tell that story.

Our goal with *Island Builder* was to connect with contractors on several levels. First, we wanted to let our most important customers know more about the innovative building products and materials they can get at Slegg to help them build better, faster, and more profitably. Next, we wanted to tell them about the helpful services Slegg offers to contractor customers, like on-time delivery and custom door manufacturing. And lastly, we wanted to acknowledge some of our great employees and customers and tell their stories.

When it comes to innovative new products, this issue has plenty to see from a range of segments. In “Hardscape Architects” (page 46), we explore products that allow property owners to beautify their outdoor spaces in a maintenance-free way using the latest in stone pavers, slabs and even synthetic grass. Then in “Layering Up” (page 59), we take a look at the cutting-edge exterior insulation materials that are helping contractors meet new Building Code requirements as the industry moves toward Net-Zero construction.

Slegg has always been known as a go-to source for core building materials like

lumber, insulation and drywall supplies. In recent years, we have broadened our selection to include many more interior finishing products and materials, creating a true one-stop-shop for contractors and developers to complete their entire project with Slegg. In our “Interior Design” feature (page 14), we turn the spotlight on interior product categories like flooring, paint, wall coverings, doors and mouldings and specialty items for the kitchen and bathroom, I think you will agree that Slegg really has your project covered!

Of course, people are the heart of our business, and we take time once again in this issue to recognize some of the individuals and companies that have helped make Slegg what it is today. In “Familiar Faces” (page 91), we give you a little more insight into some veteran Slegg employees many of our contractor customers see on an almost daily basis. And in “Mutual Support Network” (page 68), we get the story behind some of our most loyal contractor customers.

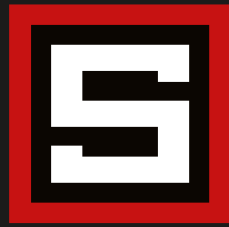
At Slegg, we like to think we are not just in the building materials business; we are in the connections business. We connect our customers with the products and materials they need to succeed, and in the process we build the lasting personal connections that have sustained our company for more than 70 years. We look forward to making many more. 



PERFORMANCE AND CONSISTENCY. BY THE PROS. FOR THE PROS.

Introducing NEW CGC Synko® Brand Pro Series Fill and Finish Joint Compound.
A professional fill and finish that matches your reputation.

cgcinc.com



SLEGG

BUILDING MATERIALS

THE ISLAND'S DOOR SHOP

2901A Sooke Road, Langford 250.386.3667



- Industry-leading Manufacturing Equipment
- Custom Made Products
- Residential / Commercial
- Vast Selection





SLEGG
BUILDING MATERIALS

GREEN BUILDING PRODUCTS

A Slegg product showcase of the latest eco-friendly construction items

There was a time not too long ago when being “eco-friendly” seemed like just another hot marketing trend.

But unlike other fads and fashions, consumer demand for products that are more sustainable and energy efficient isn't likely to fade away any time soon. In fact, as concern about climate change and the overall health of our planet (and ourselves) increases year over year—not to mention the cost of heating and cooling our homes—demand for eco-friendly products will only grow.

Of course, when it comes to building products and materials, being environmen-

tally friendly isn't just a matter of consumer taste. With building codes across Canada moving steadily toward the goal of achieving Net-Zero energy efficiency by 2030, it is vital that builders and contractors learn about the innovative options available to them and their clients. Featuring recycled or locally sourced raw materials, increased R-values and reduced VOCs, today's building products and materials are “greener” than ever before. In the Green Products Showcase, Slegg shines the spotlight on some of the latest eco-friendly construction items on the market.



All Weather Windows Attic Hatch

With more than 40 years in the industry, All Weather Windows invests heavily into research and innovation, which resulted in a groundbreaking solution to the attic hatch that any residential or commercial property can easily integrate into their plans.

All Weather Windows' attic hatch uses an eco-friendly solution: fiberglass scraps from window and door installations. A one-piece design ensures the hatch remains airtight. Weather stripping and insulation dams make the hatch's installation simple, reducing time and costs for the builder.

It is environmentally-minded, budget-friendly and meets a high standard for energy efficiency and building codes.

www.allweatherwindows.com

Canada Go Green

The 4 Seasons solar attic fan is designed and built for sloped shingle roof applications. The vent works by using the sun's energy to power a fan which exhausts excess heat, moisture and humidity out of the attic while promoting healthy air circulation. It can operate from morning until evening and because of the sensitivity of the solar panel, this unit can work even during low light conditions. The vent is similar in shape and size compared to traditional roof vents, allowing it to work passively after sun-down. This product is often used as an alternative to wind turbines.

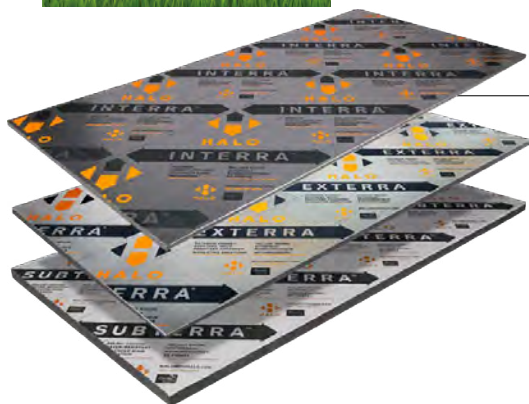
www.canadagogreen.com



Columbia Venting Skylights

Provide natural movement of fresh air in your home with the installation of a Columbia venting skylight. Available in manual or electric venting models—wall switch or remote control choices. All Columbia skylights are available in a choice of Energy Star glazing options, including triple glazed that meet the new 2020 criteria. Only Energy Star venting skylights are available in Canada. All venting models come in 22 standard sizes, with custom sizes in any glazing type. Columbia skylights can be ordered with choice of 7 frame colours to match your roof or window trims. Industry leading warranty, including 20 years against failure of sealed units.

www.ColumbiaSkylights.com



Halo Insulation System

From below-grade to above-grade, inside and out, Halo is the Advanced Graphite Insulation System that features a series of rigid insulation products. The Halo system offers a high performance, low carbon graphite polystyrene (GPS) core:

Halo Interra (interior)

- Built-in vapour barrier
- Reflective
- Energy efficient
- No thermal barrier needed

Halo Exterra (exterior)

- Breathable
- Water resistive
- Energy efficient
- Durable and flexible

Halo Subterra (below ground)

- Waterproofing protection
- Flexible
- Energy efficient
- Durable
- Radon barrier

www.buildwithhalo.com

James Hardie

James Hardie is the global leader in fiber cement technology, and has been furthering founder James Hardie's innovative, entrepreneurial legacy around the world for more than 125 years. James Hardie siding products are made from natural and sustainable raw materials that are made up of Portland cement, cellulose fibers, sand and water. Ten manufacturing facilities support the regional economy and reduce the environmental impact caused by transportation of materials, and at least 75% of raw materials are locally sourced. In 2019, the readers of *Green Builder* magazine selected James Hardie as offering the greenest siding products, with the most respondents recommending the company's sustainable exterior options over other siding manufactures.

www.jameshardie.ca



Upwardor GREEN Garage Doors

Ideal in both cold and warm weather conditions, the Kanata and Craft residential collections combine style and durability with environmental friendliness.

- Ozone friendly zero ODP polyurethane insulation is foamed in place, which ensures a consistent density and significant panel strength. At 1 3/4" (44.50 mm) thickness, these collections offer an R-value of 16+.
- An enhanced tongue and groove design, a built in thermal break tape located behind the tongue to protect it from the elements, and a low temperature vinyl bulb weather seal make these collections an excellent choice for those who are looking for a high-quality, energy efficient residential garage door.
- Six Kanata series designs, four Craft designs and multiple colour options when paired with energy efficient thermal windows give homeowners plenty of variety in designing their energy efficient garage space.

www.upwardor.com

HARBINGER Flooring

Since 1999, Bay Resource Group has been distributing innovative flooring, with a key focus on sustainable and transparent commercial flooring solutions. We take great responsibility to ensure our flooring products meet and exceed industry environmental standards. Harbinger luxury vinyl tile (LVT) is third-party certified with FloorScore, Environmental Product Declaration, Health Product Declaration and NSF/ANSI 332 Platinum. These declarations are similar to a nutrition label; the goal is to provide relevant, transparent, verified and comparable information about the product life cycle, environmental impact and human health considerations. All product declarations are available at the Mindful Material database.

www.harbingerfloors.com





Icynene-Lapolla FOAM-LOK 2000-4G

Closed-cell spray foam insulation is one of the most efficient insulating materials commercially available. Icynene-Lapolla's FOAM-LOK 2000-4G closed-cell spray foam insulation is friendly to both budgets and the environment.

4G can be used in both walls and roofs, providing superior energy economy and durability in all climate zones, while significantly reducing unmanaged moisture and air infiltration. It has been tested and proven to improve R-Values by up to 10% over other spray foam insulation systems. It also has an improved yield, increasing from 8% to 10% over previous generation products.

Also impressive are 4G's environmental benefits, as it has an ozone depleting potential of zero and a global warming potential (GWP) of just 1. This is because its formulation utilizes hydrofluoroolefins (HFOs) as a blowing agent, replacing harmful hydrofluorocarbons (HFCs). 4G also makes a huge dent in waste reduction, as the foam itself contains over 3,400 recycled plastic water bottles in each resin drum. Lapolla Industries is the first in the world to develop and commercially release a wall-foam system that eliminates ozone depletion and reduces GWP.

www.icynene.com

MALARKEY Highlander NEX AR

Highlander NEX is an architectural shingle with sustainable NEX polymer modified asphalt.

This asphalt creates a rubberized shingle that is flexible during cold weather installation and provides reliable protection from extreme weather. By combining high-grade asphalt with advanced polymers and upcycled materials, a 30 square roof with Highlander NEX diverts roughly five rubber tires and 350 plastic milk jugs from the landfill. Highlander NEX is also the industry's first smog-reducing shingle. Using specialized granules, the shingle actively reduces air pollution. Each roof has the smog-fighting potential of two or more trees.

www.malarkeyroofing.com



MILGARD

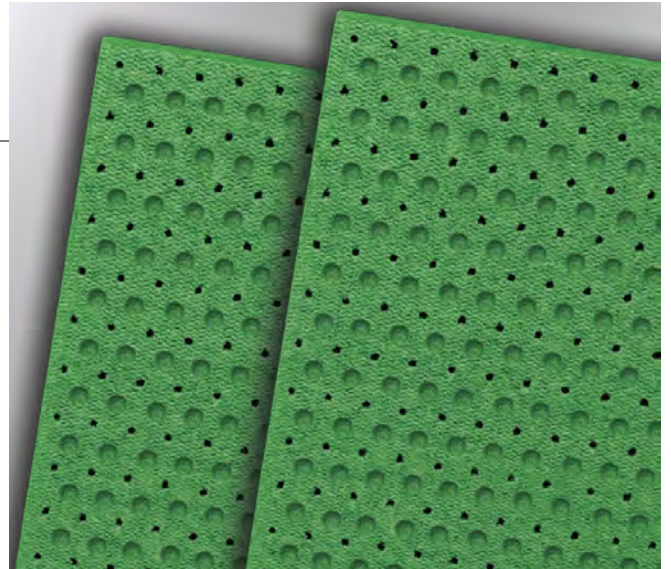
Building a green home? Take a look at this contemporary eco-friendly residence that featured energy efficient Milgard Tuscan Series vinyl windows and Ultra Series fiberglass French patio doors. The home was designed to help provide comfort year-round while keeping energy costs low and received certifications as a Department of Energy Challenge Home; ENERGY STAR Home; and a Green Built Home. Milgard formulates their energy packages to specific climates, addressing energy efficiency through the frame, product design and glazing unit. Innovative components like argon gas and Low-E glass deliver superior energy efficiency and protection against UV rays.

www.milgard.com

SONOpan Soundproofing panel

SONOpan is a high performance eco-friendly soundproofing panel with a patented technology. With cavities of varying dimensions and depths on both sides of the panel, SONOpan absorbs a wider range of frequencies, significantly reducing the transmission of sound and vibrations from one room to another. SONOpan is your optimal choice for any soundproofing project, such as: multi-unit buildings, condominiums, in-law suites, home theatres, music studios, bathrooms, etc.

www.mslfibre.com



SONOclimat ECO4

The most environmentally friendly insulation panel in Canada. The SONOclimat ECO4 insulation panel is made entirely from recycled and recyclable wood fibres. The SONOclimat ECO4 panel provides a thermal resistance value of R4, an unparalleled permeability to water vapour of 25.9 perms, robust structural properties (5.84 kN/m) as well as impressive sound attenuation properties. The SONOclimat ECO4's high water vapour permeability enables moisture to exit the wall structure, thereby preventing the development of mold and decay. The SONOclimat ECO 4 panel can be used as insulation for exterior and interior walls and contributes to obtaining credits for ecofriendly construction programs (LEED, Green build, Novo climat 2.0). The SONOclimat ECO4 panel is ideal for all eco-friendly constructions and passive house projects.

www.mslfibre.com

NaturaSeal VOC free fluid applied coatings

Naturaseal manufactures products utilizing raw materials that are derived from the process of recycling waste streams within the asphalt, wood chip, pulp and paper industries.

As a result, Naturaseal has created superior formulations for waterproofing, air barrier, roofing, corrosion protection, dust and soil stabilization, and fireproofing.

Naturaseal provides environmentally sustainable coating solutions to customers across the globe. Since inception, Naturaseal has dedicated its research and development initiatives to focus on creating the most effective, resource-friendly products to aid in preserving the environment and to represent the paradigm shift of more sustainable urbanization. All of Naturaseal's products are VOC free, solvent free, and water based.

www.naturaseal.com



Owens Corning FOAMULAR XPS Insulation

Factors such as architecture, climate and building codes combine to create a wide variety of needs which demand an equally wide range of high-performance insulation solutions. Owens Corning's FOAMULAR Extruded Polystyrene (XPS) Insulation family of rigid foam board products is here to offer these solutions. Together with EcoTouch insulation and house wrap, FOAMULAR insulation is an integral part of Owens Corning Residential Complete Wall Systems.

- Wide choice of sizes, thicknesses and edges for fast installation, less labour
- Choose the strength you need, from 20 to 100 psi
- Lifetime limited warranty for the life of the home or building
- Long-term thermal resistance
- Resists moisture and retains R-value even after exposure to standing water, wet soil and more
- Resists common acid soils and decay
- Effectively blocks mildew, corrosion and rot
- High, stable R-value (5 per inch of product thickness)
- Higher R-value than wood fiber, plywood or 1/2" gypsum board products
- Readily combines with EcoTouch Fiberglas insulation for greater R-value in walls
- Easy to handle, score, cut and install; no special tools needed
- Can be used on either wood, steel or concrete assemblies
- Compatible with common exterior finishes & claddings
- Meets all applicable codes and standards
- Certified to meet indoor air quality standards meeting the stringent GREENGUARD Gold Certification
- Third party certified recycled content-certified by Scientific Certification Systems (SCS) to contain an average of 20% recycled content
- Reusable

www.owenscorning.ca



PLASTI-FAB EnerSpan® Insulation

Plasti-Fab manufactures EnerSpan® insulation, a rigid, closed cell, silver-gray insulation that meets CAN/ULC-S701.1 requirements for expanded polystyrene (EPS) insulation. EnerSpan insulation uses Neopor®, a graphite-enhanced expandable polystyrene (GPS) raw material provided by BASF.

The graphite within the cellular structure of EnerSpan insulation reduces radiation heat transfer and results in an enhanced thermal resistance of RSI-0.82 per 25 mm (R-4.7 per inch) that does not degrade over time.

In addition, EnerSpan insulation is free of HCFCs and GREENGUARD Gold certified. EnerSpan insulation reduces heat loss thus saving energy costs and is ideal for a wide range of building applications.

www.PlastiFab.com

PLASTI-FAB Radon Guard® Insulation

Radon Guard® insulation manufactured by Plasti-Fab is a CCMC evaluated one-to-one replacement for the code-required 100 mm thick layer of granular material required beneath concrete slab-on-grade. This patented sub-slab depressurization panel insulates and is a key component in a radon mitigation system. Manufactured from PlastiSpan® HD insulation, Radon Guard insulation has an R-value of 4.04 per inch and compressive resistance of 16 psi. All Plasti-Fab insulation is listed under the GREENGUARD certification program giving assurance that it is designed for use in indoor spaces and meets strict chemical emissions limits, which contribute to the creation of healthier interiors.

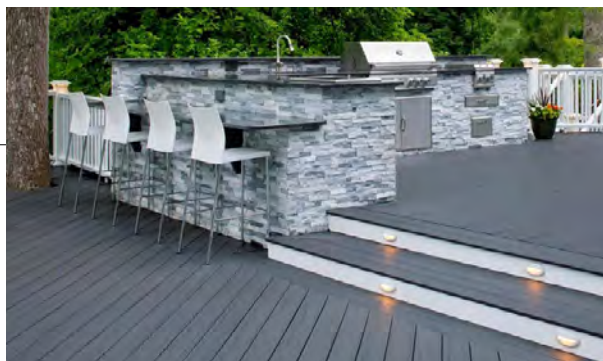
www.PlastiFab.com



Timbertech

Timbertech creates high-performing, natural-looking, sustainable decking and railing products. Their capped composite decking contains up to 80% recycled material. More than 1,000,000 trees have been saved since 2015 as homeowners chose TimberTech decking over wood. TimberTech has invested in a state-of-the-art recycling plant, increasing the amount of recycled content in each decking line, repurposing the scraps from their board-making process back into production, and deliberately sourcing hard-to-recycle materials that would traditionally end up in landfills.

www.timbertech.com



ROCKWOOL

ROCKWOOL AFB evo is a lightweight, acoustical fire batt stone wool insulation for steel stud interior wall and floor applications. This no added formaldehyde insulation provides superior sound absorbency and fire protection that contribute to the overall comfort and safety of occupants. ROCKWOOL AFB evo is UL validated to be Formaldehyde Free and LBC compliant with the Declare Product Transparency Label Database. AFB evo is non-combustible and will not develop toxic smoke or promote flame spread, even when directly exposed to fire. This helps to provide valuable extra time for people to reach safety and for fire services personnel to control the spread. It is a key component of fire-rated partitions.

www.rockwool.com

Trimlite

Trimlite offers a variety of green interior door products for your home. All of Trimlite's interior doors are Phase 2 CARB compliant, passing the strictest test in North America for minimizing the amount of formaldehyde found in wood products. Our interior doors are primed with a water-based low-VOC primer contributing to improved air quality in the spaces they occupy. Finally, our primed interior door products contain recycled content. Contact us today to learn more about our entire line of door products that improve your home's health.

www.trimlite.com



ZIP System sheathing and tape

ZIP System sheathing and tape is a unique structural roof and wall system with a built-in water-resistive barrier and continuous air barrier to keep out water and air, while allowing panels to properly dry. Quick and simple two-step installation eliminates the need for housewrap, helping to save money on labor costs and improve project cycle times. ZIP System sheathing and tape forms a continuous rigid air barrier for a tight enclosure that protects against air leakage and contributes to energy efficiency. Plus, with an integrated weather barrier it reduces risk of delays for barrier repairs.

- High-performance engineered wood structural sheathing delivers Structural 1 shear strength and exterior durability.
- Built-in water-resistive barrier eliminates the hassles of housewrap or felt.
- Continuous, rigid air barrier decreases unwanted air leakage for greater energy efficiency.
- Specially-designed acrylic seam sealing tape completes the system backed by a 180-Day Exposure Guarantee and a 30-Year Limited Warranty

www.huberwood.com/zip-system



TOTAL HEAT, AIR & MOISTURE MANAGEMENT.

ComfortSHIELD® Building Enclosure System.

High Performance Roof System

- TruDefinition® Duration® Shingles
- Deck Defense® underlayment
- Weatherlock® ice & water barrier
- PROPINK® loosefill insulation
- Raft-R-mate® attic vents

CodeBord® Exterior Air and Moisture Management System

- FOAMULAR® CodeBord® XPS insulating sheathing and taped joints (JointSealR® tape)
- FlashSealR® flashing tape
- EcoTouch® PINK® FIBERGLAS® Insulation (R-20/22/24)

High Performance Basement Insulation and Moisture Management System

- FOAMULAR® CodeBord®
- EcoTouch® PINK® FIBERGLAS® Insulation

High Performance Basement Slab System

- FOAMULAR® CodeBord® XPS Insulation with taped joints (JointSealR® tape)

